

**SCGB1A1 Antibody**  
**Purified Mouse Monoclonal Antibody**  
**Catalog # AO1772a****Specification****SCGB1A1 Antibody - Product Information**

Application	E, WB, FC
Primary Accession	<a href="#">P11684</a>
Reactivity	Human
Host	Mouse
Clonality	Monoclonal
Isotype	IgG1
Calculated MW	10kDa KDa

**Description**

This gene encodes a member of the secretoglobulin family of small secreted proteins. The encoded protein has been implicated in numerous functions including anti-inflammation, inhibition of phospholipase A2 and the sequestering of hydrophobic ligands. Defects in this gene are associated with a susceptibility to asthma.

**Immunogen**

Purified recombinant fragment of human SCGB1A1 (AA: 26-91) expressed in E. Coli.

**Formulation**

Purified antibody in PBS with 0.05% sodium azide

**SCGB1A1 Antibody - Additional Information**

**Gene ID** 7356

**Other Names**

Uteroglobin, Clara cell phospholipid-binding protein, CCPBP, Clara cells 10 kDa secretory protein, CC10, Secretoglobulin family 1A member 1, Urinary protein 1, UP-1, UP1, Urine protein 1, SCGB1A1, CC10, CCSP, UGB

**Dilution**

E~~1/10000  
WB~~1/500 - 1/2000  
FC~~1/200 - 1/400

**Storage**

Maintain refrigerated at 2-8°C for up to 6 months. For long term storage store at -20°C in small aliquots to prevent freeze-thaw cycles.

**Precautions**

SCGB1A1 Antibody is for research use only and not for use in diagnostic or therapeutic procedures.

**SCGB1A1 Antibody - Protein Information**

**Name** SCGB1A1

**Synonyms** CC10, CCSP, UGB

**Function**

Binds phosphatidylcholine, phosphatidylinositol, polychlorinated biphenyls (PCB) and weakly progesterone, potent inhibitor of phospholipase A2.

**Cellular Location**

Secreted.

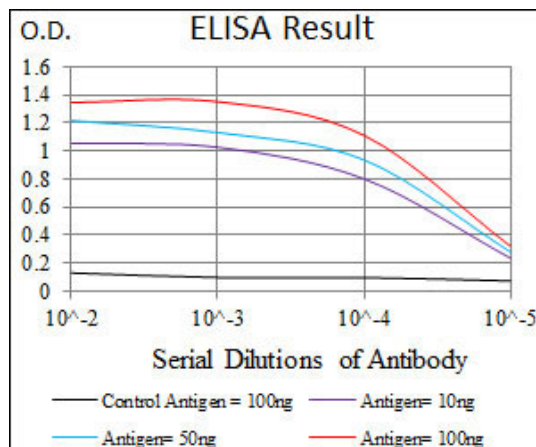
**Tissue Location**

Club cells (nonciliated cells of the surface epithelium of the pulmonary airways)

**SCGB1A1 Antibody - Protocols**

Provided below are standard protocols that you may find useful for product applications.

- [Western Blot](#)
- [Blocking Peptides](#)
- [Dot Blot](#)
- [Immunohistochemistry](#)
- [Immunofluorescence](#)
- [Immunoprecipitation](#)
- [Flow Cytometry](#)
- [Cell Culture](#)



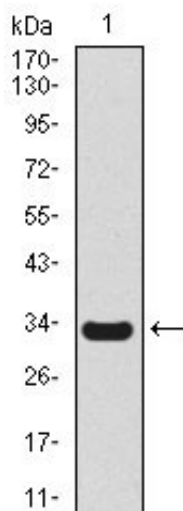


Figure 1: Western blot analysis using SCGB1A1 mAb against human SCGB1A1 recombinant protein. (Expected MW is 33.4 kDa)

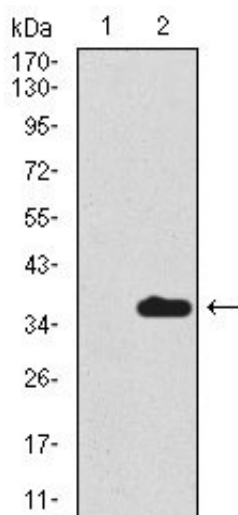


Figure 2: Western blot analysis using SCGB1A1 mAb against HEK293 (1) and SCGB1A1 (AA: 26-91)-hlgGfc transfected HEK293 (2) cell lysate.

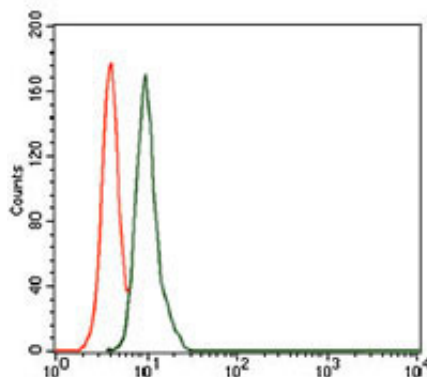


Figure 3: Flow cytometric analysis of A549 cells using SCGB1A1 mouse mAb (green) and negative control (red).

### SCGB1A1 Antibody - References

1. Transplantation. 2010 Aug 15;90(3):340-2. 2. Neonatology. 2010;97(3):228-34.

