

**human Splunc2 Antibody**  
**Purified Mouse Monoclonal Antibody**  
**Catalog # AO1773a****Specification****human Splunc2 Antibody - Product Information**

Application	E, WB, FC
Primary Accession	<a href="#">Q96DR5</a>
Reactivity	Human
Host	Mouse
Clonality	Monoclonal
Isotype	IgG1
Calculated MW	27kDa KDa

**Description**

SPLUNC2 is one member of PLUNC family, the gene undergoes alternative splicing using two 5' non-coding exons, suggesting that the gene is regulated by alternative promoters. multiple SPLUNC2 isoforms are found in the oral cavity and suggest that these proteins may be differentially regulated in distinct tissues where they may function in the innate immune response. Mucin plugs, mucous and intermediate cells of mucoepidermoid carcinomas were positive for LPLUNC1 and SPLUNC2, but areas composed of epidermoid and clear cells were negative for all PLUNCs. Papillary cystadenocarcinoma was positive for all PLUNCs.

**Immunogen**

Purified recombinant fragment of human Splunc2 (AA: 16-250) expressed in E. Coli.

**Formulation**

Purified antibody in PBS with 0.05% sodium azide

**human Splunc2 Antibody - Additional Information**

**Gene ID** 140683

**Other Names**

BPI fold-containing family A member 2, Parotid secretory protein, PSP, Short palate, lung and nasal epithelium carcinoma-associated protein 2, BPIFA2, C20orf70, SPLUNC2

**Dilution**

E~~1/10000

WB~~1/500 - 1/2000

FC~~1/200 - 1/400

**Storage**

Maintain refrigerated at 2-8°C for up to 6 months. For long term storage store at -20°C in small aliquots to prevent freeze-thaw cycles.

**Precautions**

human Splunc2 Antibody is for research use only and not for use in diagnostic or therapeutic procedures.

## human Splunc2 Antibody - Protein Information

**Name** BPIFA2

**Synonyms** C20orf70, SPLUNC2

**Function**

Has strong antibacterial activity against *P. aeruginosa*.

**Cellular Location**

Secreted.

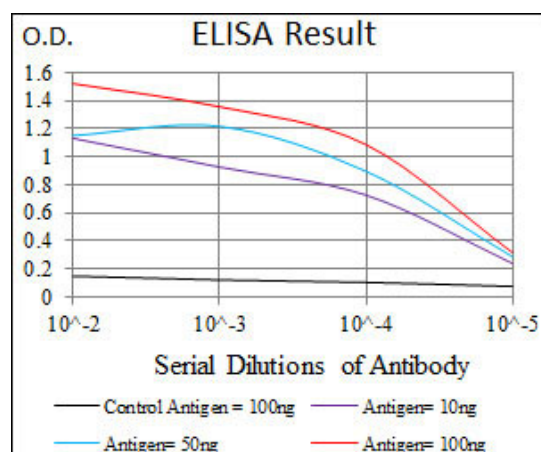
**Tissue Location**

Detected in submandibular gland. Secreted into saliva.

## human Splunc2 Antibody - Protocols

Provided below are standard protocols that you may find useful for product applications.

- [Western Blot](#)
- [Blocking Peptides](#)
- [Dot Blot](#)
- [Immunohistochemistry](#)
- [Immunofluorescence](#)
- [Immunoprecipitation](#)
- [Flow Cytometry](#)
- [Cell Culture](#)



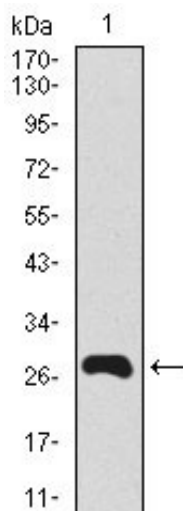


Figure 1: Western blot analysis using Splunc2 mAb against human Splunc2 recombinant protein. (Expected MW is 27.6 kDa)

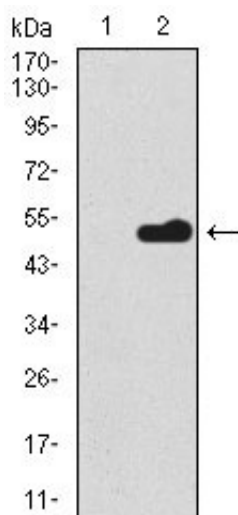


Figure 2: Western blot analysis using Splunc2 mAb against HEK293 (1) and Splunc2 (AA: 16-250)-hlgGfc transfected HEK293 (2) cell lysate.

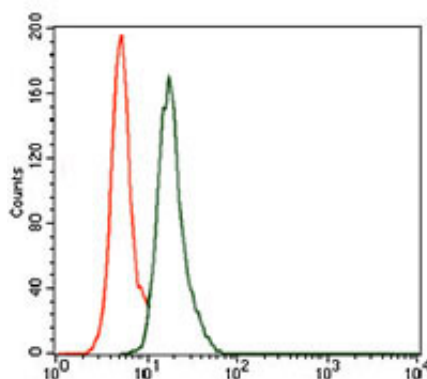


Figure 3: Flow cytometric analysis of A549 cells using Splunc2 mouse mAb (green) and negative control (red).

#### human Splunc2 Antibody - References

1.Histochem Cell Biol. 2009 Sep;132(3):339-49. 2.Oral Dis. 2008 Oct;14(7):613-9.

