

T Antibody
Purified Mouse Monoclonal Antibody
Catalog # AO1777a**Specification****T Antibody - Product Information**

Application	E, WB, FC, IHC
Primary Accession	O15178
Reactivity	Human
Host	Mouse
Clonality	Monoclonal
Isotype	IgG1
Calculated MW	47.4kDa KDa

Description

The protein encoded by this gene is an embryonic nuclear transcription factor that binds to a specific DNA element, the palindromic T-site. It binds through a region in its N-terminus, called the T-box, and effects transcription of genes required for mesoderm formation and differentiation. The protein is localized to notochord-derived cells.

Immunogen

Purified recombinant fragment of human T (AA: 257-309) expressed in E. Coli.

Formulation

Purified antibody in PBS with 0.05% sodium azide

T Antibody - Additional Information

Gene ID 6862

Other Names

Brachyury protein, Protein T, T

Dilution

E~~1/10000
WB~~1/500 - 1/2000
FC~~1/200 - 1/400
IHC~~1/200 - 1/1000

Storage

Maintain refrigerated at 2-8°C for up to 6 months. For long term storage store at -20°C in small aliquots to prevent freeze-thaw cycles.

Precautions

T Antibody is for research use only and not for use in diagnostic or therapeutic procedures.

T Antibody - Protein Information

Name TBXT ([HGNC:11515](#))

Synonyms T

Function

Involved in the transcriptional regulation of genes required for mesoderm formation and differentiation. Binds to a palindromic T site 5'-TTCACACCTAGGTGTGAA-3' DNA sequence and activates gene transcription when bound to such a site.

Cellular Location

Nucleus

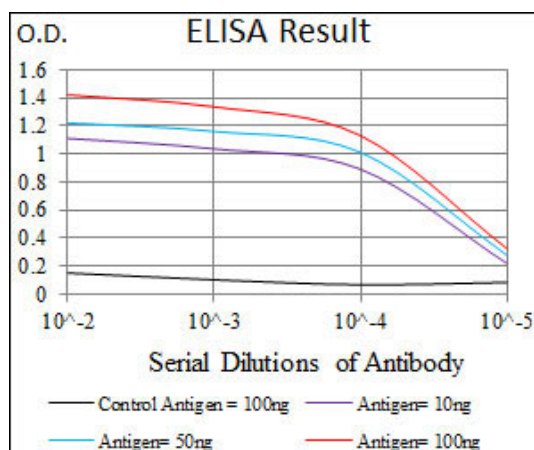
Tissue Location

Detected in testis, but not in other, normal tissues. Detected in lung tumors (at protein level)

T Antibody - Protocols

Provided below are standard protocols that you may find useful for product applications.

- [Western Blot](#)
- [Blocking Peptides](#)
- [Dot Blot](#)
- [Immunohistochemistry](#)
- [Immunofluorescence](#)
- [Immunoprecipitation](#)
- [Flow Cytometry](#)
- [Cell Culture](#)



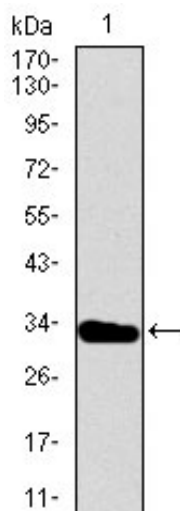


Figure 1: Western blot analysis using T mAb against human T recombinant protein. (Expected MW is 31.2 kDa)

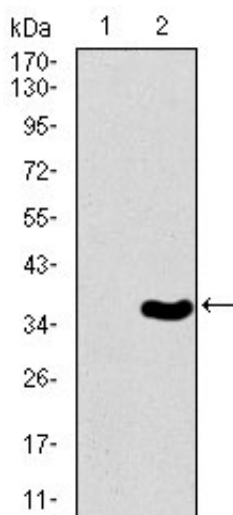


Figure 2: Western blot analysis using T mAb against HEK293 (1) and T (AA: 257-309)-hIgGFc transfected HEK293 (2) cell lysate.

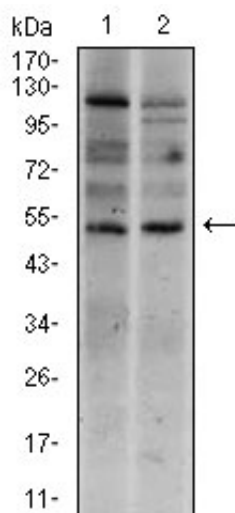


Figure 3: Western blot analysis using T mouse mAb against Raji (1), and Jurkat (2) cell lysate.

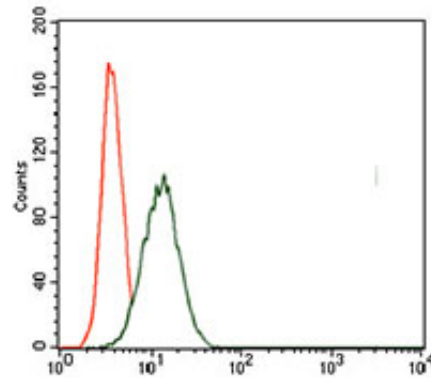


Figure 4: Flow cytometric analysis of HeLa cells using T mouse mAb (green) and negative control (red).

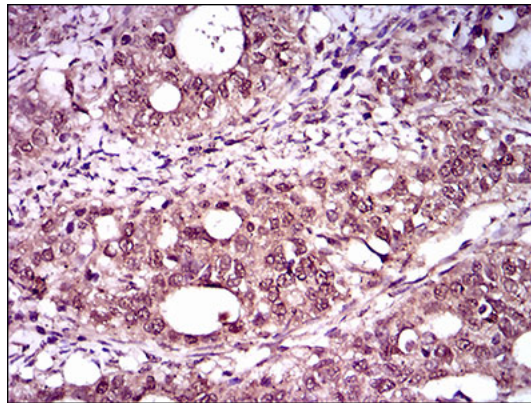


Figure 5: Immunohistochemical analysis of paraffin-embedded cervical cancer tissues using T mouse mAb with DAB staining.

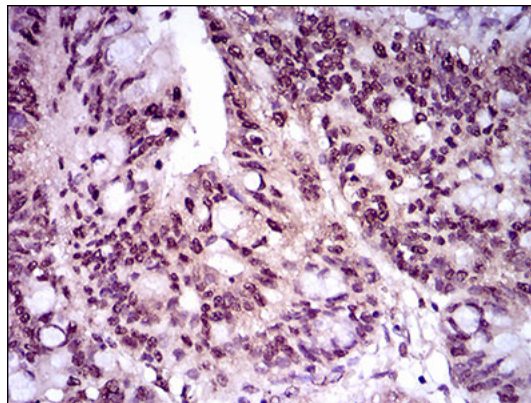


Figure 6: Immunohistochemical analysis of paraffin-embedded rectum cancer tissues using T mouse mAb with DAB staining.

T Antibody - References

1. Am J Surg Pathol. 2008 Apr;32(4):572-80. 2. J Clin Neurosci. 2011 Jan;18(1):96-9.