

**PPY Antibody**  
**Purified Mouse Monoclonal Antibody**  
**Catalog # AO1780a****Specification****PPY Antibody - Product Information**

Application	E, WB, FC
Primary Accession	<a href="#">P01298</a>
Reactivity	Human
Host	Mouse
Clonality	Monoclonal
Isotype	IgG1
Calculated MW	10.4kDa KDa

**Description**

This gene belongs to the NPY family and it encodes a protein that is synthesized as a 95 aa polypeptide precursor in the pancreatic islets of Langerhans. It is cleaved into two peptide products; the active hormone of 36 aa and an icosapeptide of unknown function. The hormone acts as a regulator of pancreatic and gastrointestinal functions and may be important in the regulation of food intake. Plasma level of this hormone has been shown to be reduced in conditions associated with increased food intake and elevated in anorexia nervosa. In addition, infusion of this hormone in obese rodents has shown to decrease weight gain.

**Immunogen**

Purified recombinant fragment of human PPY (AA: 1-95) expressed in E. Coli.

**Formulation**

Purified antibody in PBS with 0.05% sodium azide

**PPY Antibody - Additional Information**

**Gene ID** 5539

**Other Names**

Pancreatic prohormone, Pancreatic polypeptide, PP, Obinepitide, Pancreatic hormone, PH, Pancreatic icosapeptide, PI, PPY, PNP

**Dilution**

E~~1/10000  
WB~~1/500 - 1/2000  
FC~~1/200 - 1/400

**Storage**

Maintain refrigerated at 2-8°C for up to 6 months. For long term storage store at -20°C in small aliquots to prevent freeze-thaw cycles.

**Precautions**

PPY Antibody is for research use only and not for use in diagnostic or therapeutic procedures.

## PPY Antibody - Protein Information

**Name** PPY ([HGNC:9327](#))

**Synonyms** PNP

### Function

[Pancreatic polypeptide]: Hormone secreted by pancreatic cells that acts as a regulator of pancreatic and gastrointestinal functions probably by signaling through the G protein-coupled receptor NPY4R2.

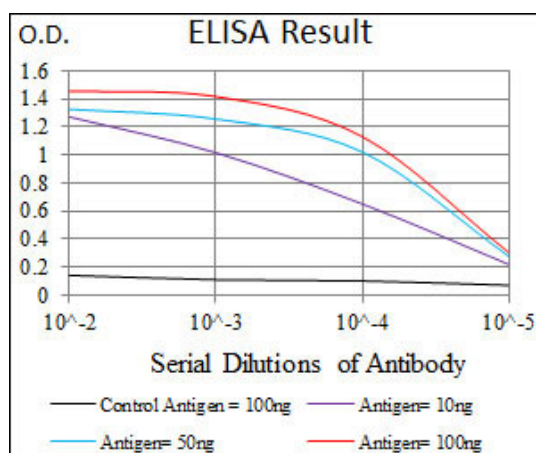
### Cellular Location

Secreted

## PPY Antibody - Protocols

Provided below are standard protocols that you may find useful for product applications.

- [Western Blot](#)
- [Blocking Peptides](#)
- [Dot Blot](#)
- [Immunohistochemistry](#)
- [Immunofluorescence](#)
- [Immunoprecipitation](#)
- [Flow Cytometry](#)
- [Cell Culture](#)



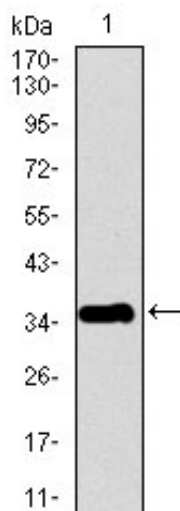


Figure 1: Western blot analysis using PPY mAb against human PPY recombinant protein. (Expected MW is 35.9 kDa)

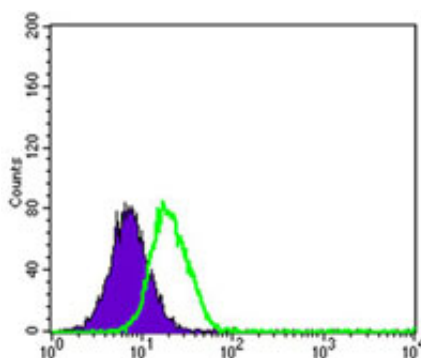


Figure 2: Flow cytometric analysis of HepG2 cells using PPY mouse mAb (green) and negative control (purple).

### PPY Antibody - References

1. Am J Clin Nutr. 2011 Oct;94(4):967-72. 2. Pharm Res. 2012 Jun;29(6):1698-711.