

**PHC1 Antibody**  
**Purified Mouse Monoclonal Antibody**  
**Catalog # AO1803a****Specification****PHC1 Antibody - Product Information**

Application	E, WB, FC
Primary Accession	<a href="#">P78364</a>
Reactivity	Human
Host	Mouse
Clonality	Monoclonal
Isotype	IgG1
Calculated MW	105.5kDa KDa

**Description**

This gene is a homolog of the Drosophila polyhomeotic gene, which is a member of the Polycomb group of genes. The gene product is a component of a multimeric protein complex that contains EDR2 and the vertebrate Polycomb protein BMH1. The gene product, the EDR2 protein, and the Drosophila polyhomeotic protein share 2 highly conserved domains, named homology domains I and II. These domains are involved in protein-protein interactions and may mediate heterodimerization of the protein encoded by this gene and the EDR2 protein.

**Immunogen**

Purified recombinant fragment of human PHC1 (AA: 758-1004) expressed in E. Coli.

**Formulation**

Purified antibody in PBS with 0.05% sodium azide

**PHC1 Antibody - Additional Information**

**Gene ID** 1911

**Other Names**

Polyhomeotic-like protein 1, hPH1, Early development regulatory protein 1, PHC1, EDR1, PH1

**Dilution**

E~~1/10000  
WB~~1/500 - 1/2000  
FC~~1/200 - 1/400

**Storage**

Maintain refrigerated at 2-8°C for up to 6 months. For long term storage store at -20°C in small aliquots to prevent freeze-thaw cycles.

**Precautions**

PHC1 Antibody is for research use only and not for use in diagnostic or therapeutic procedures.

**PHC1 Antibody - Protein Information**

**Name** PHC1

**Synonyms** EDR1, PH1

**Function**

Component of a Polycomb group (PcG) multiprotein PRC1-like complex, a complex class required to maintain the transcriptionally repressive state of many genes, including Hox genes, throughout development. PcG PRC1 complex acts via chromatin remodeling and modification of histones; it mediates monoubiquitination of histone H2A 'Lys-119', rendering chromatin heritably changed in its expressibility. Required for proper control of cellular levels of GMNN expression.

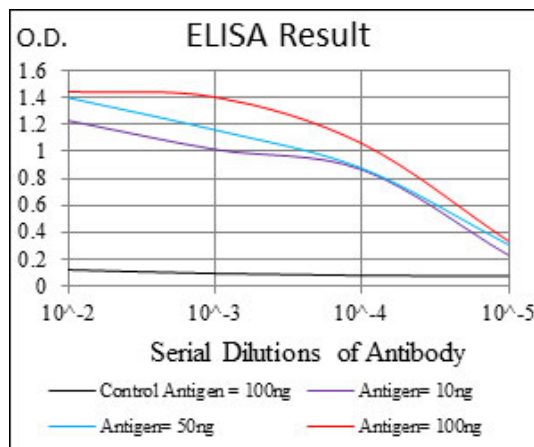
**Cellular Location**

Nucleus

**PHC1 Antibody - Protocols**

Provided below are standard protocols that you may find useful for product applications.

- [Western Blot](#)
- [Blocking Peptides](#)
- [Dot Blot](#)
- [Immunohistochemistry](#)
- [Immunofluorescence](#)
- [Immunoprecipitation](#)
- [Flow Cytometry](#)
- [Cell Culture](#)



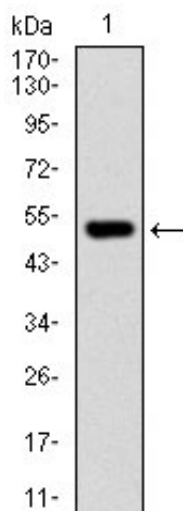


Figure 1: Western blot analysis using PHC1 mAb against human PHC1 recombinant protein. (Expected MW is 52.8 kDa)

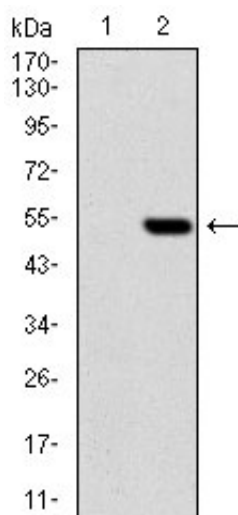


Figure 2: Western blot analysis using PHC1 mAb against HEK293 (1) and PHC1 (AA: 758-1004)-hlgGFc transfected HEK293 (2) cell lysate.

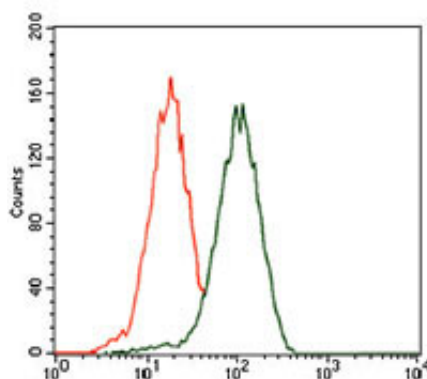


Figure 3: Flow cytometric analysis of HEK293 cells using PHC1 mouse mAb (green) and negative control (red).

#### PHC1 Antibody - References

1.Development. 2007 Feb;134(3):579-90. 2.Nature. 2006 May 18;441(7091):349-53.

