

**CD24 Antibody**  
**Purified Mouse Monoclonal Antibody**  
**Catalog # AO1822a****Specification****CD24 Antibody - Product Information**

Application	E, WB, FC
Primary Accession	<a href="#">P25063</a>
Reactivity	Human
Host	Mouse
Clonality	Monoclonal
Isotype	IgG1
Calculated MW	8kDa KDa

**Description**

This gene encodes a sialoglycoprotein that is expressed on mature granulocytes and in many B cells. The encoded protein is anchored via a glycosyl phosphatidylinositol (GPI) link to the cell surface.

**Immunogen**

Purified recombinant fragment of human CD24 (AA: 15-80) expressed in E. Coli.

**Formulation**

Purified antibody in PBS with 0.05% sodium azide

**CD24 Antibody - Additional Information**

**Gene ID** 100133941

**Other Names**

Signal transducer CD24, Small cell lung carcinoma cluster 4 antigen, CD24, CD24, CD24A

**Dilution**

E~~1/10000  
WB~~1/500 - 1/2000  
FC~~1/200 - 1/400

**Storage**

Maintain refrigerated at 2-8°C for up to 6 months. For long term storage store at -20°C in small aliquots to prevent freeze-thaw cycles.

**Precautions**

CD24 Antibody is for research use only and not for use in diagnostic or therapeutic procedures.

**CD24 Antibody - Protein Information**

**Name** CD24

## Synonyms CD24A

### Function

May have a pivotal role in cell differentiation of different cell types. Signaling could be triggered by the binding of a lectin- like ligand to the CD24 carbohydrates, and transduced by the release of second messengers derived from the GPI-anchor. Modulates B-cell activation responses. Promotes AG-dependent proliferation of B-cells, and prevents their terminal differentiation into antibody-forming cells (PubMed:<a href="http://www.uniprot.org/citations/11313396" target="\_blank">11313396</a>). In association with SIGLEC10 may be involved in the selective suppression of the immune response to danger-associated molecular patterns (DAMPs) such as HMGB1, HSP70 and HSP90. Plays a role in the control of autoimmunity (By similarity).

### Cellular Location

Cell membrane; Lipid-anchor, GPI-anchor.

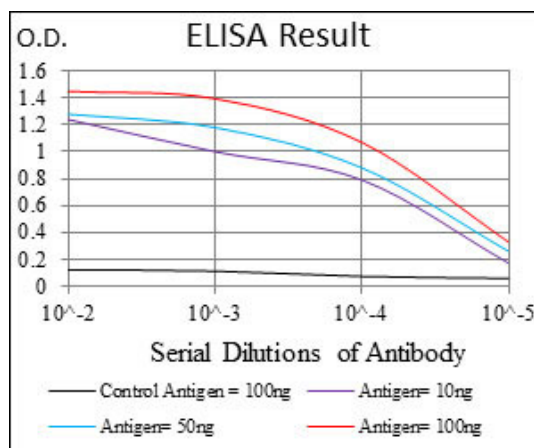
### Tissue Location

B-cells. Expressed in a number of B-cell lines including P32/ISH and Namalwa. Expressed in erythroleukemia cell and small cell lung carcinoma cell lines. Also expressed on the surface of T-cells.

## CD24 Antibody - Protocols

Provided below are standard protocols that you may find useful for product applications.

- [Western Blot](#)
- [Blocking Peptides](#)
- [Dot Blot](#)
- [Immunohistochemistry](#)
- [Immunofluorescence](#)
- [Immunoprecipitation](#)
- [Flow Cytometry](#)
- [Cell Culture](#)



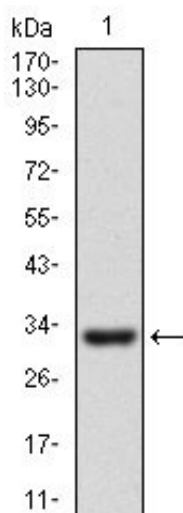


Figure 1: Western blot analysis using CD24 mAb against human CD24 recombinant protein. (Expected MW is 32.1 kDa)

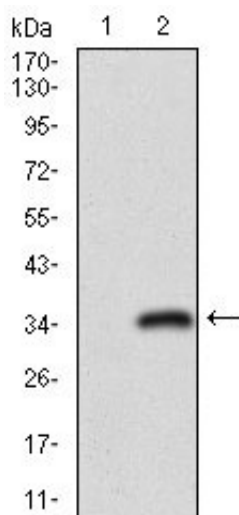


Figure 2: Western blot analysis using CD24 mAb against HEK293 (1) and CD24 (AA: 15-80)-hIgGFc transfected HEK293 (2) cell lysate.

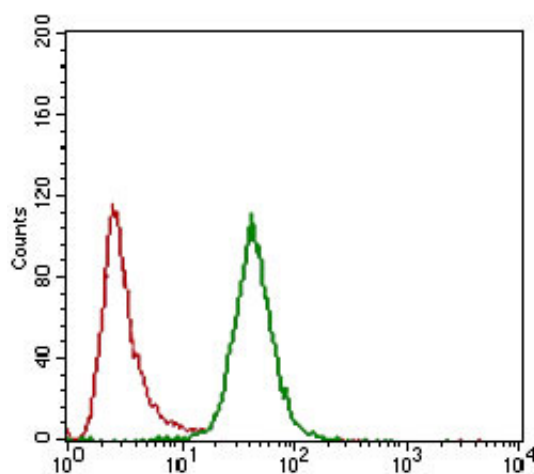


Figure 3: Flow cytometric analysis of HeLa cells using CD24 mouse mAb (green) and negative control (red).

**CD24 Antibody - Background**

This gene encodes a sialoglycoprotein that is expressed on mature granulocytes and in many B cells. The encoded protein is anchored via a glycosyl phosphatidylinositol (GPI) link to the cell surface. ; ;

**CD24 Antibody - References**

1. Cancer Res. 2012 Nov 1;72(21):5600-12.
2. Stem Cell Rev. 2012 Sep;8(3):779-91.