

ONECUT3 Antibody
Purified Mouse Monoclonal Antibody
Catalog # AO1836a**Specification****ONECUT3 Antibody - Product Information**

Application	E, WB, IHC
Primary Accession	O60422
Reactivity	Human
Host	Mouse
Clonality	Monoclonal
Isotype	IgG1
Calculated MW	50kDa KDa

Description

The protein encoded by this gene is a transcriptional activator. It can bind the consensus DNA sequence 5'-DHWATTGAYTWWD-3' on a variety of gene promoters such as those of HNF3B and TTR(By similarity).

Immunogen

Purified recombinant fragment of human ONECUT3 (AA: 350-455) expressed in E. Coli.

Formulation

Purified antibody in PBS with 0.05% sodium azide

ONECUT3 Antibody - Additional Information

Gene ID 390874

Other Names

One cut domain family member 3, One cut homeobox 3, Transcription factor ONECUT-3, OC-3, ONECUT3

Dilution

E~~1/10000
WB~~1/500 - 1/2000
IHC~~1/200 - 1/1000

Storage

Maintain refrigerated at 2-8°C for up to 6 months. For long term storage store at -20°C in small aliquots to prevent freeze-thaw cycles.

Precautions

ONECUT3 Antibody is for research use only and not for use in diagnostic or therapeutic procedures.

ONECUT3 Antibody - Protein Information

Name ONECUT3

Function

Transcriptional activator. Binds the consensus DNA sequence 5'-DHWATTGAYTWWD-3' on a variety of gene promoters such as those of HNF3B and TTR (By similarity).

Cellular Location

Nucleus {ECO:0000255|PROSITE-ProRule:PRU00108, ECO:0000255|PROSITE-ProRule:PRU00374}

ONECUT3 Antibody - Protocols

Provided below are standard protocols that you may find useful for product applications.

- [Western Blot](#)
- [Blocking Peptides](#)
- [Dot Blot](#)
- [Immunohistochemistry](#)
- [Immunofluorescence](#)
- [Immunoprecipitation](#)
- [Flow Cytometry](#)
- [Cell Culture](#)

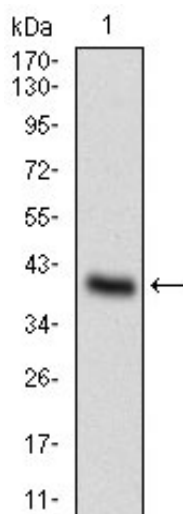
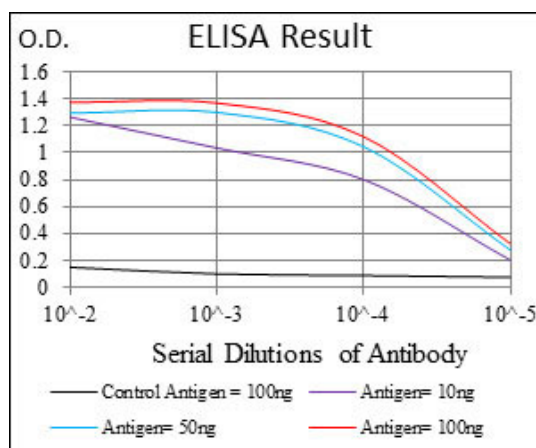


Figure 1: Western blot analysis using ONECUT3 mAb against human ONECUT3 recombinant protein.

(Expected MW is 38.2 kDa)

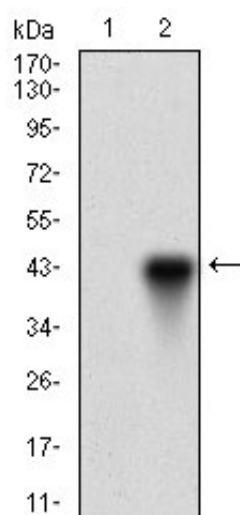


Figure 2: Western blot analysis using ONECUT3 mAb against HEK293 (1) and ONECUT3 (AA: 350-455)-hlgGfc transfected HEK293 (2) cell lysate.

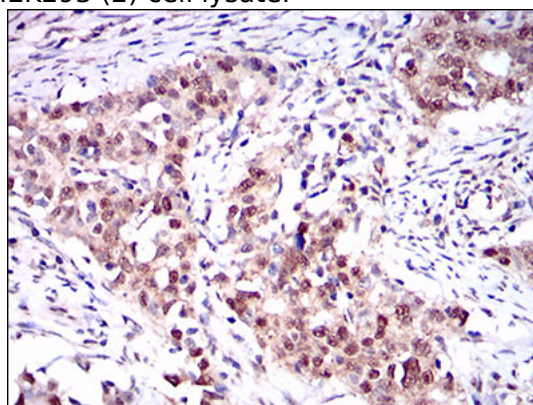


Figure 3: Immunohistochemical analysis of paraffin-embedded cervical cancer tissues using ONECUT3 mouse mAb with DAB staining.

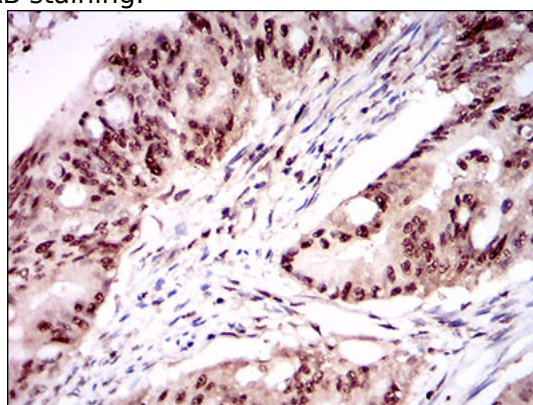


Figure 4: Immunohistochemical analysis of paraffin-embedded rectum cancer tissues using ONECUT3 mouse mAb with DAB staining.

ONECUT3 Antibody - Background

The product of this gene transfers fucose to N-acetyllactosamine polysaccharides to generate fucosylated carbohydrate structures. It catalyzes the synthesis of the non-sialylated antigen, Lewis x (CD15). ;

ONECUT3 Antibody - References

1. Biochem Biophys Res Commun. 2002 Apr 12;292(4):848-54.