

**THY1 Antibody**  
**Purified Mouse Monoclonal Antibody**  
**Catalog # AO1848a****Specification****THY1 Antibody - Product Information**

Application	E, WB, IF, IHC
Primary Accession	<a href="#">P04216</a>
Reactivity	Human
Host	Mouse
Clonality	Monoclonal
Isotype	IgG1
Calculated MW	18kDa KDa

**Description**

THY1 may play a role in cell-cell or cell-ligand interactions during synaptogenesis and other events in the brain

**Immunogen**

Purified recombinant fragment of human THY1 (AA: 17-132) expressed in E. Coli.

**Formulation**

Purified antibody in PBS with 0.05% sodium azide

**THY1 Antibody - Additional Information**

**Gene ID** 7070

**Other Names**

Thy-1 membrane glycoprotein, CDw90, Thy-1 antigen, CD90, THY1

**Dilution**

E~~1/10000  
WB~~1/500 - 1/2000  
IF~~1/200 - 1/1000  
IHC~~1/200 - 1/1000

**Storage**

Maintain refrigerated at 2-8°C for up to 6 months. For long term storage store at -20°C in small aliquots to prevent freeze-thaw cycles.

**Precautions**

THY1 Antibody is for research use only and not for use in diagnostic or therapeutic procedures.

**THY1 Antibody - Protein Information**

**Name** THY1

## Function

May play a role in cell-cell or cell-ligand interactions during synaptogenesis and other events in the brain.

## Cellular Location

Cell membrane; Lipid-anchor, GPI- anchor

## THY1 Antibody - Protocols

Provided below are standard protocols that you may find useful for product applications.

- [Western Blot](#)
- [Blocking Peptides](#)
- [Dot Blot](#)
- [Immunohistochemistry](#)
- [Immunofluorescence](#)
- [Immunoprecipitation](#)
- [Flow Cytometry](#)
- [Cell Culture](#)

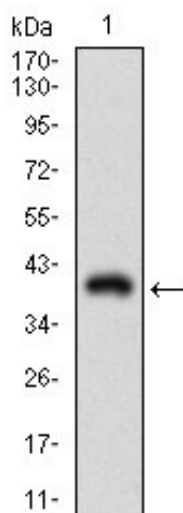
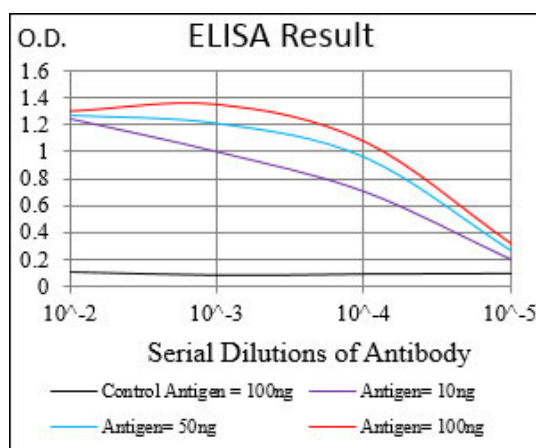


Figure 1: Western blot analysis using THY1 mAb against human THY1 recombinant protein. (Expected MW is 38.5 kDa)

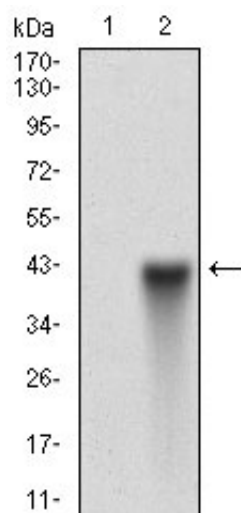


Figure 2: Western blot analysis using THY1 mAb against HEK293 (1) and THY1 (AA: 17-132)-hIgGFc transfected HEK293 (2) cell lysate.

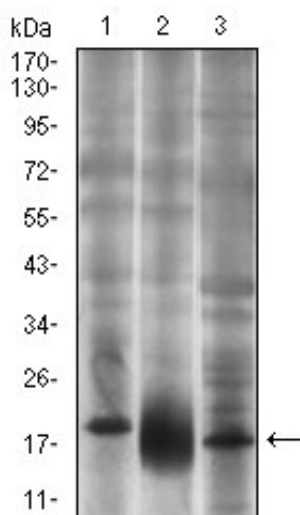


Figure 3: Western blot analysis using THY1 mouse mAb against T47D (1), HepG2 (2) and PC-12 (3) cell lysate.

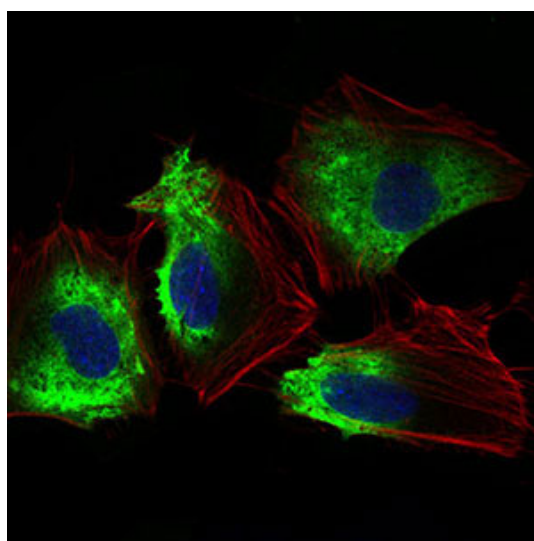


Figure 4: Immunofluorescence analysis of HeLa cells using THY1 mouse mAb (green). Blue: DRAQ5 fluorescent DNA dye. Red: Actin filaments have been labeled with Alexa Fluor-555 phalloidin.

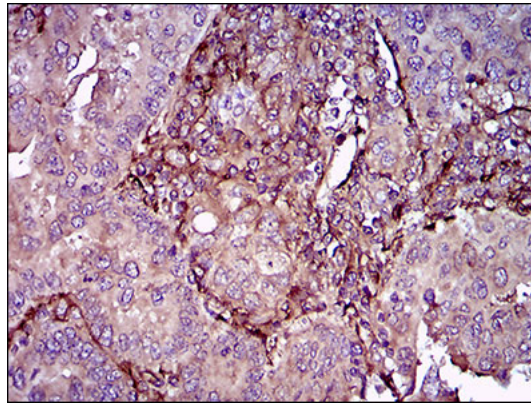


Figure 5: Immunohistochemical analysis of paraffin-embedded endometrial cancer tissues using THY1 mouse mAb with DAB staining.

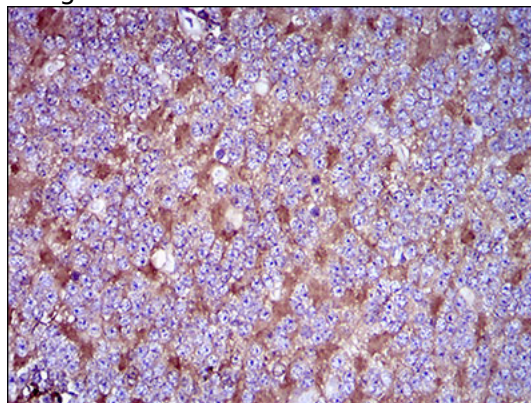


Figure 6: Immunohistochemical analysis of paraffin-embedded cerebellum tissues using THY1 mouse mAb with DAB staining.

#### **THY1 Antibody - Background**

This gene encodes a zinc finger transcription factor. The encoded protein likely plays a role in transcriptional repression of interleukin 2. Mutations in this gene have been associated with posterior polymorphous corneal dystrophy-3 and late-onset Fuchs endothelial corneal dystrophy. Alternatively spliced transcript variants encoding different isoforms have been described. ; ;

#### **THY1 Antibody - References**

1. Acta Histochem. 2011 Dec;113(8):833-8.
2. J Immunol. 2012 Feb 1;188(3):981-91.