

IGFBP7 Antibody
Purified Mouse Monoclonal Antibody
Catalog # AO1866a**Specification****IGFBP7 Antibody - Product Information**

Application	E, WB
Primary Accession	Q16270
Reactivity	Human
Host	Mouse
Clonality	Monoclonal
Isotype	IgG1
Calculated MW	29.1kDa KDa

Description

This gene encodes a member of the insulin-like growth factor (IGF)-binding protein (IGFBP) family. IGFBPs bind IGFs with high affinity, and regulate IGF availability in body fluids and tissues and modulate IGF binding to its receptors. This protein binds IGF-I and IGF-II with relatively low affinity, and belongs to a subfamily of low-affinity IGFBPs. It also stimulates prostacyclin production and cell adhesion. Alternatively spliced transcript variants encoding different isoforms have been described for this gene, and one variant has been associated with retinal arterial macroaneurysm (PMID:21835307).

Immunogen

Purified recombinant fragment of human IGFBP7 (AA: 52-156) expressed in E. Coli.

Formulation

Purified antibody in PBS with 0.05% sodium azide

IGFBP7 Antibody - Additional Information

Gene ID 3490

Other Names

Insulin-like growth factor-binding protein 7, IBP-7, IGF-binding protein 7, IGFBP-7, IGFBP-rP1, MAC25 protein, PGI2-stimulating factor, Prostacyclin-stimulating factor, Tumor-derived adhesion factor, TAF, IGFBP7, MAC25, PSF

Dilution

E~~1/10000

WB~~1/500 - 1/2000

Storage

Maintain refrigerated at 2-8°C for up to 6 months. For long term storage store at -20°C in small aliquots to prevent freeze-thaw cycles.

Precautions

IGFBP7 Antibody is for research use only and not for use in diagnostic or therapeutic procedures.

IGFBP7 Antibody - Protein Information

Name IGFBP7

Synonyms MAC25, PSF

Function

Binds IGF-I and IGF-II with a relatively low affinity. Stimulates prostacyclin (PGI₂) production. Stimulates cell adhesion.

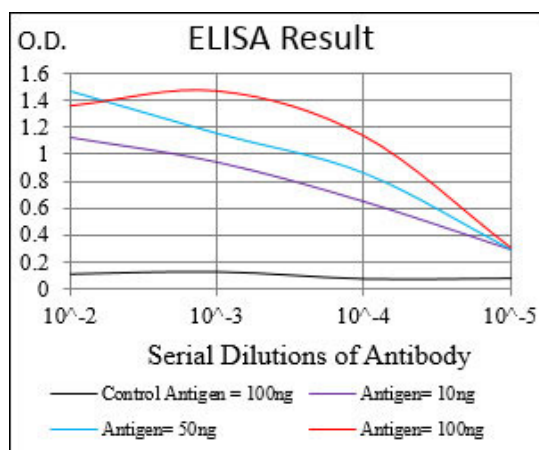
Cellular Location

Secreted.

IGFBP7 Antibody - Protocols

Provided below are standard protocols that you may find useful for product applications.

- [Western Blot](#)
- [Blocking Peptides](#)
- [Dot Blot](#)
- [Immunohistochemistry](#)
- [Immunofluorescence](#)
- [Immunoprecipitation](#)
- [Flow Cytometry](#)
- [Cell Culture](#)



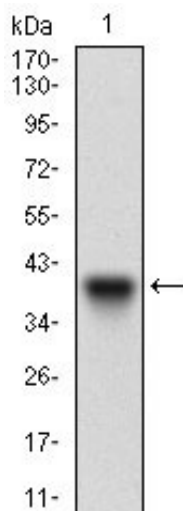


Figure 1: Western blot analysis using IGFBP7 mAb against human IGFBP7 recombinant protein. (Expected MW is 36 kDa)

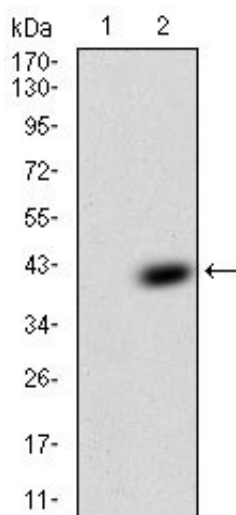


Figure 2: Western blot analysis using IGFBP7 mAb against HEK293 (1) and IGFBP7 (AA: 52-156)-hlgGFc transfected HEK293 (2) cell lysate.

IGFBP7 Antibody - Background

This gene encodes a member of the insulin-like growth factor (IGF)-binding protein (IGFBP) family. IGFBPs bind IGFs with high affinity, and regulate IGF availability in body fluids and tissues and modulate IGF binding to its receptors. This protein binds IGF-I and IGF-II with relatively low affinity, and belongs to a subfamily of low-affinity IGFBPs. It also stimulates prostacyclin production and cell adhesion. Alternatively spliced transcript variants encoding different isoforms have been described for this gene, and one variant has been associated with retinal arterial macroaneurysm (PMID:21835307). ;

IGFBP7 Antibody - References

1. Sci Signal. 2012 Dec 18;5(255):ra92. 2. Cancer Biol Ther. 2012 Feb 1;13(3):148-55.