

**PPP1R1B Antibody**  
**Purified Mouse Monoclonal Antibody**  
**Catalog # AO1894a****Specification****PPP1R1B Antibody - Product Information**

Application	E, WB, FC
Primary Accession	<a href="#">Q9UD71</a>
Reactivity	Human
Host	Mouse
Clonality	Monoclonal
Isotype	IgG1
Calculated MW	23kDa KDa

**Description**

This gene encodes a bifunctional signal transduction molecule. Dopaminergic and glutamatergic receptor stimulation regulates its phosphorylation and function as a kinase or phosphatase inhibitor. As a target for dopamine, this gene may serve as a therapeutic target for neurologic and psychiatric disorders. Multiple transcript variants encoding different isoforms have been found for this gene.

**Immunogen**

Purified recombinant fragment of human PPP1R1B (AA: 95-204) expressed in E. Coli.

**Formulation**

Purified antibody in PBS with 0.05% sodium azide

**PPP1R1B Antibody - Additional Information**

**Gene ID** 84152

**Other Names**

Protein phosphatase 1 regulatory subunit 1B, DARPP-32, Dopamine- and cAMP-regulated neuronal phosphoprotein, PPP1R1B, DARPP32

**Dilution**

E~~1/10000  
WB~~1/500 - 1/2000  
FC~~1/200 - 1/400

**Storage**

Maintain refrigerated at 2-8°C for up to 6 months. For long term storage store at -20°C in small aliquots to prevent freeze-thaw cycles.

**Precautions**

PPP1R1B Antibody is for research use only and not for use in diagnostic or therapeutic procedures.

**PPP1R1B Antibody - Protein Information**

**Name** PPP1R1B

**Synonyms** DARPP32

**Function**

Inhibitor of protein-phosphatase 1.

**Cellular Location**

Cytoplasm.

**PPP1R1B Antibody - Protocols**

Provided below are standard protocols that you may find useful for product applications.

- [Western Blot](#)
- [Blocking Peptides](#)
- [Dot Blot](#)
- [Immunohistochemistry](#)
- [Immunofluorescence](#)
- [Immunoprecipitation](#)
- [Flow Cytometry](#)
- [Cell Culture](#)

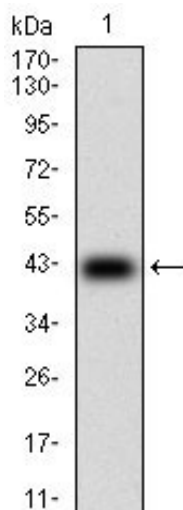
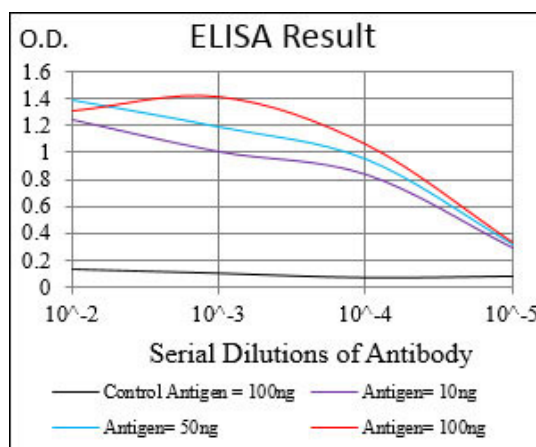


Figure 1: Western blot analysis using PPP1R1B mAb against human PPP1R1B (AA: 95-204) recombinant protein. (Expected MW is 38.3 kDa)

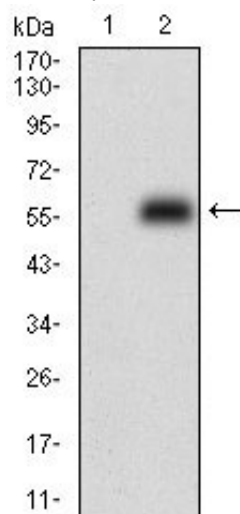


Figure 2: Western blot analysis using PPP1R1B mAb against HEK293 (1) and PPP1R1B (AA: 95-204)-hlgGFc transfected HEK293 (2) cell lysate.

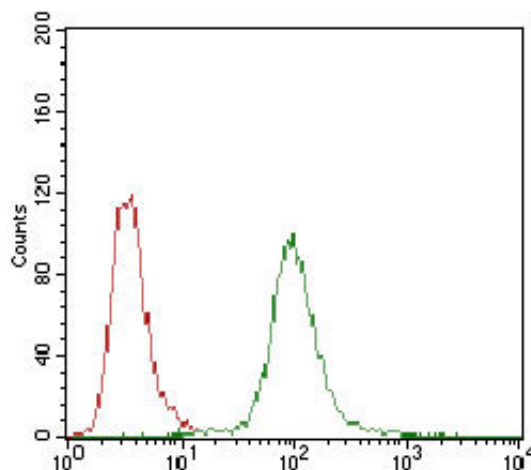


Figure 3: Flow cytometric analysis of Hela cells using PPP1R1B mouse mAb (green) and negative control (red).

### PPP1R1B Antibody - Background

This gene encodes a transcription factor which is a member of a small family of basic leucine zipper (bZIP) proteins. The encoded transcription factor regulates genes which contain antioxidant response elements (ARE) in their promoters; many of these genes encode proteins involved in response to injury and inflammation which includes the production of free radicals. Multiple transcript variants encoding different isoforms have been found for this gene. ;

### PPP1R1B Antibody - References

1. Med Mol Morphol. 2011 Dec;44(4):190-9.
2. Breast Cancer Res Treat. 2010 Feb;120(1):47-57.