

Bpifa2 Antibody
Purified Mouse Monoclonal Antibody
Catalog # AO1908a**Specification****Bpifa2 Antibody - Product Information**

Application	E, WB, FC, IHC
Primary Accession	P07743
Reactivity	Human
Host	Mouse
Clonality	Monoclonal
Isotype	IgG1
Calculated MW	24.8kDa KDa

Description

Bpifa2 has strong antibacterial activity against P. aeruginosa.

Immunogen

Purified recombinant fragment of mouse mSplunc2 (AA: 16-169) expressed in E. Coli.

Formulation

Purified antibody in PBS with 0.05% sodium azide.

Bpifa2 Antibody - Additional Information

Gene ID 19194

Other Names

BPI fold-containing family A member 2, Parotid secretory protein, PSP, Bpifa2, Psp

Dilution

E~~1/10000

WB~~1/500 - 1/2000

FC~~1/200 - 1/400

IHC~~1/200 - 1/1000

Storage

Maintain refrigerated at 2-8°C for up to 6 months. For long term storage store at -20°C in small aliquots to prevent freeze-thaw cycles.

Precautions

Bpifa2 Antibody is for research use only and not for use in diagnostic or therapeutic procedures.

Bpifa2 Antibody - Protein Information

Name Bpifa2

Synonyms Psp

Function

Has strong antibacterial activity against *P. aeruginosa*.

Cellular Location

Secreted.

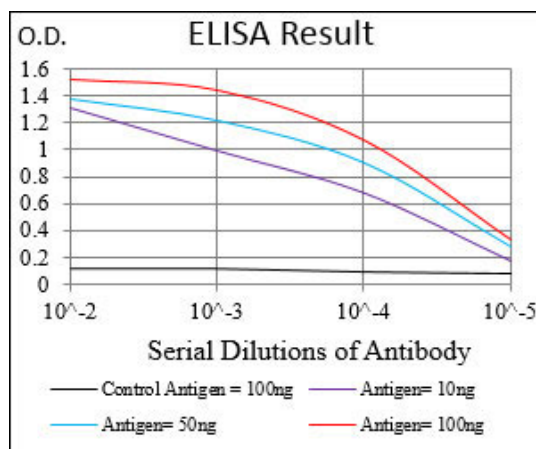
Tissue Location

Predominates in the parotid glands, present in smaller amounts (1/10) in the submaxillary glands and in the sublingual glands, and at lower amount in the pancreas but undetectable in the liver. Found also in lacrimal gland.

Bpifa2 Antibody - Protocols

Provided below are standard protocols that you may find useful for product applications.

- [Western Blot](#)
- [Blocking Peptides](#)
- [Dot Blot](#)
- [Immunohistochemistry](#)
- [Immunofluorescence](#)
- [Immunoprecipitation](#)
- [Flow Cytometry](#)
- [Cell Culture](#)



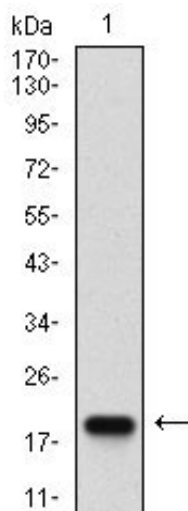


Figure 1: Western blot analysis using mSplunc2 mAb against human mSplunc2 (AA:) recombinant protein. (Expected MW is 18.5 kDa)

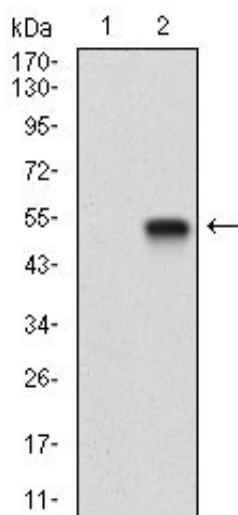


Figure 2: Western blot analysis using mSplunc2 mAb against HEK293 (1) and mSplunc2 -hlgFc transfected HEK293 (2) cell lysate.

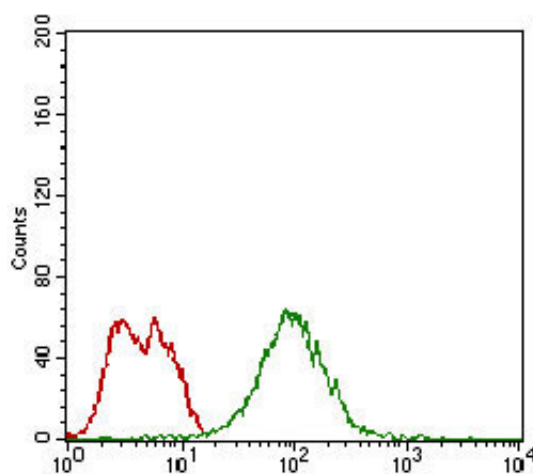


Figure 3: Flow cytometric analysis of MCF-7 cells using mSplunc2 mouse mAb (green) and negative control (red).

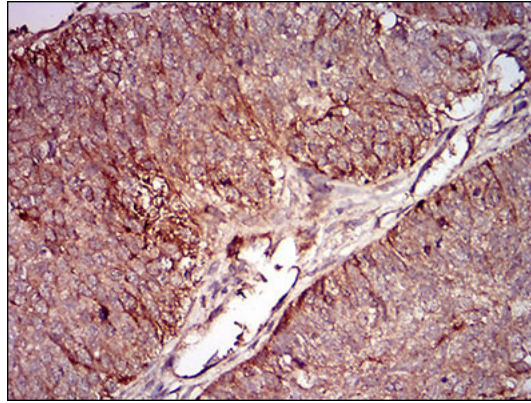


Figure 4: Immunohistochemical analysis of paraffin-embedded ovarian cancer tissues using mSplunc2 mouse mAb with DAB staining.

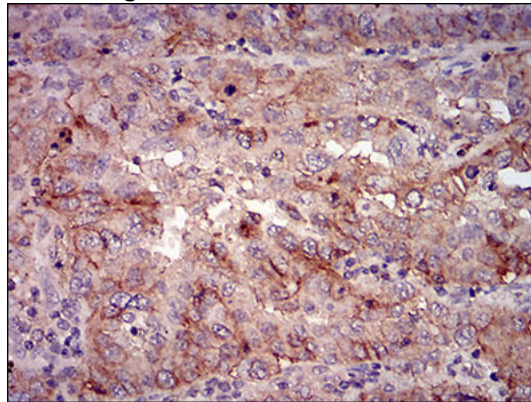


Figure 5: Immunohistochemical analysis of paraffin-embedded endometrial cancer tissues using mSplunc2 mouse mAb with DAB staining.

Bpifa2 Antibody - Background

The protein encoded by this gene is a plasma membrane protein that catalyzes the conversion of extracellular nucleotides to membrane-permeable nucleosides. The encoded protein is used as a determinant of lymphocyte differentiation. Defects in this gene can lead to the calcification of joints and arteries. Two transcript variants encoding different isoforms have been found for this gene. ;

Bpifa2 Antibody - References

1. Am J Physiol. 1997 Apr;272(4 Pt 1):G863-71.
2. Nucleic Acids Res. 1998 Jun 1;26(11):2761-70.