

**MMEL1 Antibody**  
**Purified Mouse Monoclonal Antibody**  
**Catalog # AO1937a****Specification****MMEL1 Antibody - Product Information**

Application	E, WB, FC, IHC
Primary Accession	<a href="#">Q495T6</a>
Reactivity	Human
Host	Mouse
Clonality	Monoclonal
Isotype	IgG1
Calculated MW	89.4kDa KDa

**Description**

The protein encoded by this gene is a member of the neutral endopeptidase (NEP) or membrane metallo-endopeptidase (MME) family. Family members play important roles in pain perception, arterial pressure regulation, phosphate metabolism and homeostasis. This protein is a type II transmembrane protein and is thought to be expressed as a secreted protein. This gene is expressed mainly in testis with weak expression in the brain, kidney, and heart.

**Immunogen**

Purified recombinant fragment of human MMEL1 (AA: 1-107) expressed in E. Coli.

**Formulation**

Purified antibody in PBS with 0.05% sodium azide.

**MMEL1 Antibody - Additional Information**

**Gene ID** 79258

**Other Names**

Membrane metallo-endopeptidase-like 1, 3.4.24.11, Membrane metallo-endopeptidase-like 2, NEP2(m), Neprilysin II, NEPII, Neprilysin-2, NEP2, NL2, Membrane metallo-endopeptidase-like 1, soluble form, Neprilysin-2 secreted, NEP2(s), MMEL1, MELL1, MMEL2, NEP2

**Dilution**

E~~1/10000  
WB~~1/500 - 1/2000  
FC~~1/200 - 1/400  
IHC~~1/200 - 1/1000

**Storage**

Maintain refrigerated at 2-8°C for up to 6 months. For long term storage store at -20°C in small aliquots to prevent freeze-thaw cycles.

**Precautions**

MMEL1 Antibody is for research use only and not for use in diagnostic or therapeutic procedures.

## MMEL1 Antibody - Protein Information

**Name** MMEL1

**Synonyms** MELL1, MMEL2, NEP2

### Function

Metalloprotease involved in sperm function, possibly by modulating the processes of fertilization and early embryonic development. Degrades a broad variety of small peptides with a preference for peptides shorter than 3 kDa containing neutral bulky aliphatic or aromatic amino acid residues. Shares the same substrate specificity with MME and cleaves peptides at the same amide bond (By similarity).

### Cellular Location

Membrane; Single-pass type II membrane protein. Secreted. Note=A secreted form produced by proteolytic cleavage also exists.

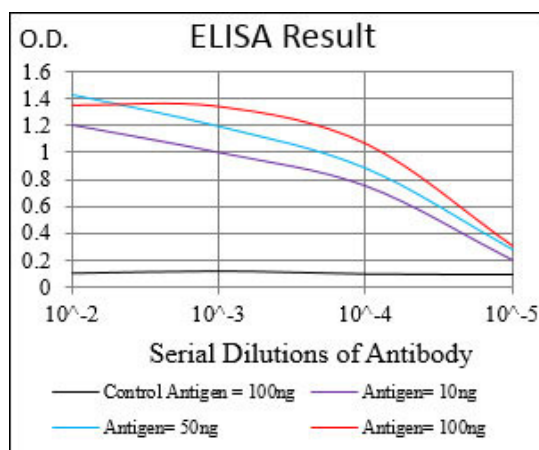
### Tissue Location

Predominantly expressed in testis. Weakly expressed in brain, kidney and heart.

## MMEL1 Antibody - Protocols

Provided below are standard protocols that you may find useful for product applications.

- [Western Blot](#)
- [Blocking Peptides](#)
- [Dot Blot](#)
- [Immunohistochemistry](#)
- [Immunofluorescence](#)
- [Immunoprecipitation](#)
- [Flow Cytometry](#)
- [Cell Culture](#)



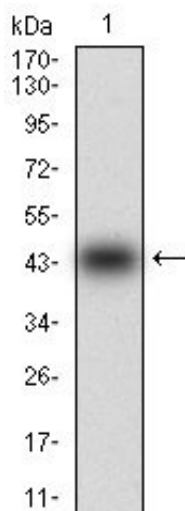


Figure 1: Western blot analysis using MMEL1 mAb against human MMEL1 (AA: 1-107) recombinant protein. (Expected MW is 37 kDa)

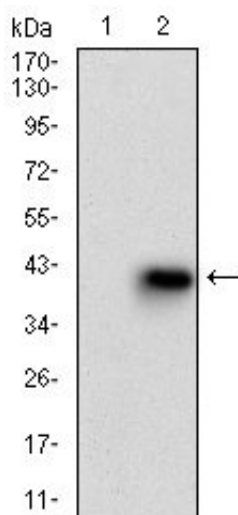


Figure 2: Western blot analysis using MMEL1 mAb against HEK293 (1) and MMEL1 (AA: 1-107)-hlgGfc transfected HEK293 (2) cell lysate.

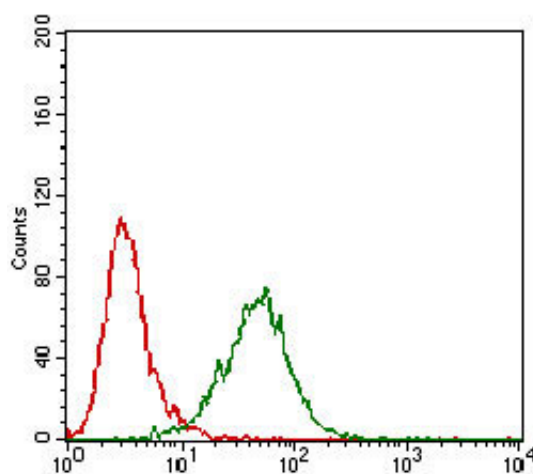


Figure 3: Flow cytometric analysis of HeLa cells using MMEL1 mouse mAb (green) and negative control (red).

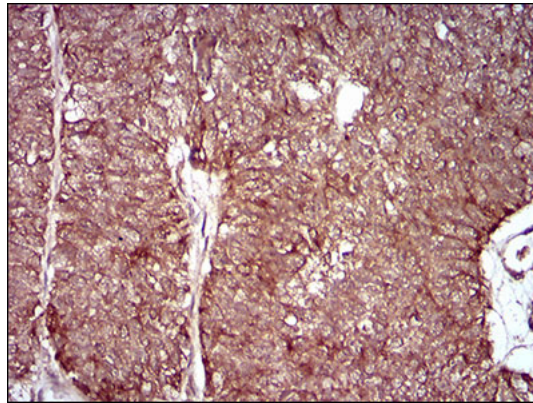


Figure 4: Immunohistochemical analysis of paraffin-embedded ovarian cancer tissues using MMEL1 mouse mAb with DAB staining.

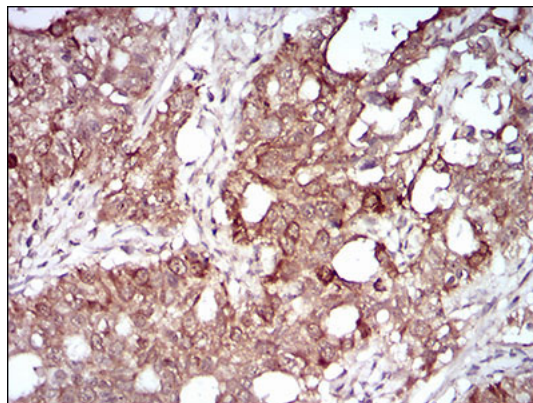


Figure 5: Immunohistochemical analysis of paraffin-embedded cervical cancer tissues using MMEL1 mouse mAb with DAB staining.

#### **MMEL1 Antibody - Background**

The protein encoded by this gene may interact with p53 and may be involved in tumorigenesis. The encoded protein also appears to be important for stem cell proliferation. This protein is found in both the nucleus and nucleolus. Three transcript variants encoding two different isoforms have been found for this gene. ; ;

#### **MMEL1 Antibody - References**

1. Genes Immun. 2010 Dec;11(8):660-4.2. Ann Rheum Dis. 2011 Oct;70(10):1793-7.