

GAB1 Antibody
Purified Mouse Monoclonal Antibody
Catalog # AO2013a**Specification****GAB1 Antibody - Product Information**

Application	E, WB, FC
Primary Accession	Q13480
Reactivity	Human
Host	Mouse
Clonality	Monoclonal
Isotype	IgG1
Calculated MW	32.4kDa KDa

Description

The protein encoded by this gene is a member of the IRS1-like multisubstrate docking protein family. It is an important mediator of branching tubulogenesis and plays a central role in cellular growth response, transformation and apoptosis. Two transcript variants encoding different isoforms have been found for this gene.

Immunogen

Purified recombinant fragment of human GAB1 (AA: 661-724) expressed in E. Coli.

Formulation

Purified antibody in PBS with 0.05% sodium azide

GAB1 Antibody - Additional Information

Gene ID 2549

Other Names

GRB2-associated-binding protein 1, GRB2-associated binder 1, Growth factor receptor bound protein 2-associated protein 1, GAB1

Dilution

E~~1/10000
WB~~1/500 - 1/2000
FC~~1/200 - 1/400

Storage

Maintain refrigerated at 2-8°C for up to 6 months. For long term storage store at -20°C in small aliquots to prevent freeze-thaw cycles.

Precautions

GAB1 Antibody is for research use only and not for use in diagnostic or therapeutic procedures.

GAB1 Antibody - Protein Information

Name GAB1

Function

Adapter protein that plays a role in intracellular signaling cascades triggered by activated receptor-type kinases. Plays a role in FGFR1 signaling. Probably involved in signaling by the epidermal growth factor receptor (EGFR) and the insulin receptor (INSR). Involved in the MET/HGF-signaling pathway (PubMed:29408807).

GAB1 Antibody - Protocols

Provided below are standard protocols that you may find useful for product applications.

- [Western Blot](#)
- [Blocking Peptides](#)
- [Dot Blot](#)
- [Immunohistochemistry](#)
- [Immunofluorescence](#)
- [Immunoprecipitation](#)

• [Flow Cytometry](#)

• [Cell Culture](#)

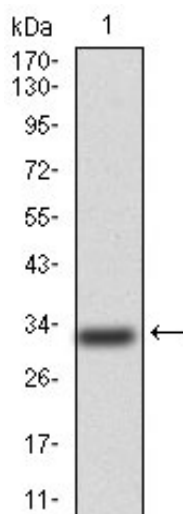
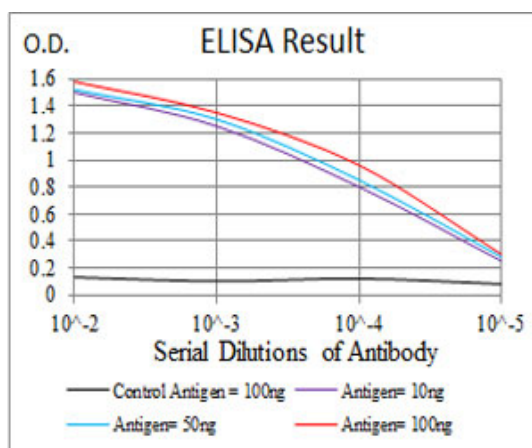


Figure 1: Western blot analysis using GAB1 mAb against human GAB1(AA:661-724) recombinant

protein. (Expected MW is 32.4 kDa)

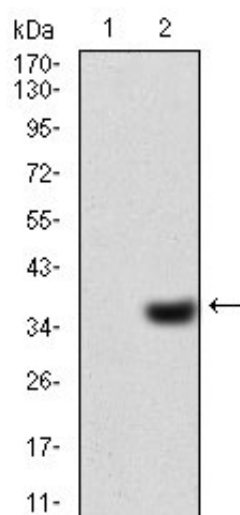


Figure 2: Western blot analysis using GAB1 mAb against HEK293 (1) and GAB1 (AA:661-724)-hlgGFc transfected HEK293 (2) cell lysate.

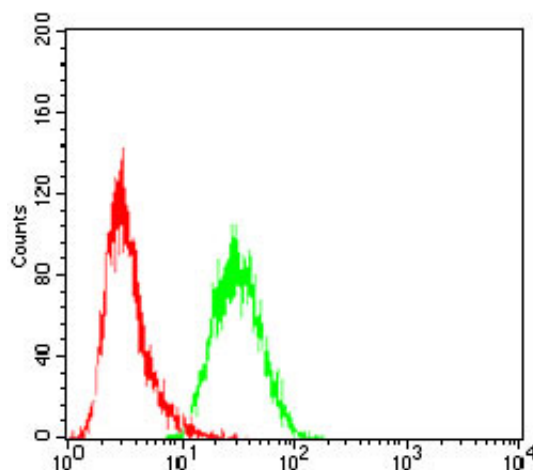


Figure 4: Flow cytometric analysis of Hela cells using GAB1 mouse mAb (green) and negative control (red).

GAB1 Antibody - References

Cell Signal. 2009 Dec;21(12):1775-83. Cell. 2009 Jan 23;136(2):352-63.