

Mouse Monoclonal Antibody to LGALS1
Purified Mouse Monoclonal Antibody
Catalog # AO2356a**Specification**

Mouse Monoclonal Antibody to LGALS1 - Product Information

Application	E, WB, FC, IHC
Primary Accession	P09382
Reactivity	Human
Host	Mouse
Clonality	Monoclonal
Isotype	Mouse IgG1
Calculated MW	14.7kDa KDa

Description

The galectins are a family of beta-galactoside-binding proteins implicated in modulating cell-cell and cell-matrix interactions. This gene product may act as an autocrine negative growth factor that regulates cell proliferation.;

Immunogen

Purified recombinant fragment of human LGALS1 (AA: 1-135) expressed in E. Coli.

Formulation

Purified antibody in PBS with 0.05% sodium azide

Application Note

ELISA: 1/10000; WB: 1/500 - 1/2000; IHC: 1/200 - 1/1000; FCM: 1/200 - 1/400

Mouse Monoclonal Antibody to LGALS1 - Additional Information

Gene ID 3956

Other Names

GBP; GAL1

Storage

Maintain refrigerated at 2-8°C for up to 6 months. For long term storage store at -20°C in small aliquots to prevent freeze-thaw cycles.

Precautions

Mouse Monoclonal Antibody to LGALS1 is for research use only and not for use in diagnostic or therapeutic procedures.

Mouse Monoclonal Antibody to LGALS1 - Protein Information

Name LGALS1 ([HGNC:6561](#))

Function

Lectin that binds beta-galactoside and a wide array of complex carbohydrates. Plays a role in regulating apoptosis, cell proliferation and cell differentiation. Inhibits CD45 protein phosphatase activity and therefore the dephosphorylation of Lyn kinase. Strong inducer of T-cell apoptosis.

Cellular Location

Secreted, extracellular space, extracellular matrix. Cytoplasm. Secreted Note=Can be secreted; the secretion is dependent on protein unfolding and facilitated by the cargo receptor TMED10; it results in protein translocation from the cytoplasm into the ERGIC (endoplasmic reticulum- Golgi intermediate compartment) followed by vesicle entry and secretion.

Tissue Location

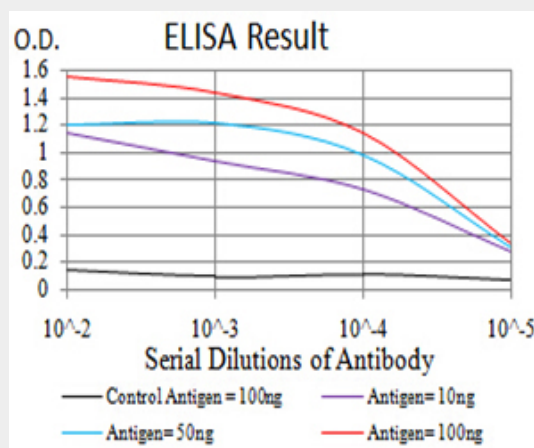
Expressed in placenta, maternal decidua and fetal membranes. Within placenta, expressed in trophoblasts, stromal cells, villous endothelium, syncytiotrophoblast apical membrane and villous stroma. Within fetal membranes, expressed in amnion, chorioamniotic mesenchyma and chorion (at protein level). Expressed in cardiac, smooth, and skeletal muscle, neurons, thymus, kidney and hematopoietic cells.

Mouse Monoclonal Antibody to LGALS1 - Protocols

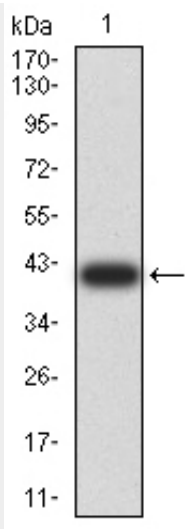
Provided below are standard protocols that you may find useful for product applications.

- [Western Blot](#)
- [Blocking Peptides](#)
- [Dot Blot](#)
- [Immunohistochemistry](#)
- [Immunofluorescence](#)
- [Immunoprecipitation](#)
- [Flow Cytometry](#)
- [Cell Culture](#)

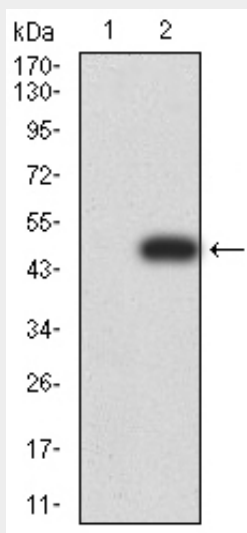
Mouse Monoclonal Antibody to LGALS1 - Images



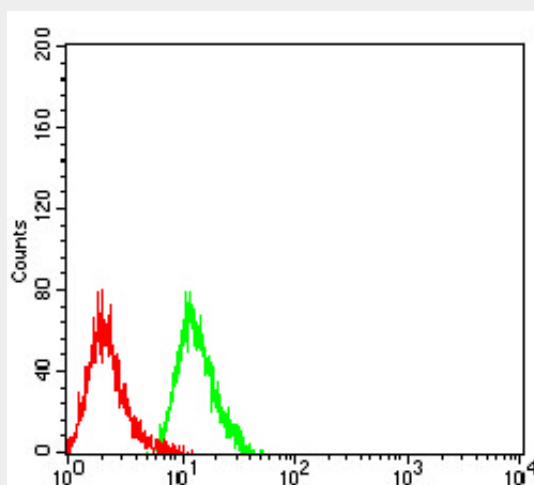
Black line: Control Antigen (100 ng);Purple line: Antigen (10ng); Blue line: Antigen (50 ng); Red line:Antigen (100 ng)



Western blot analysis using LGALS1 mAb against human LGALS1 (AA: 1-135) recombinant protein. (Expected MW is 40.7 kDa)

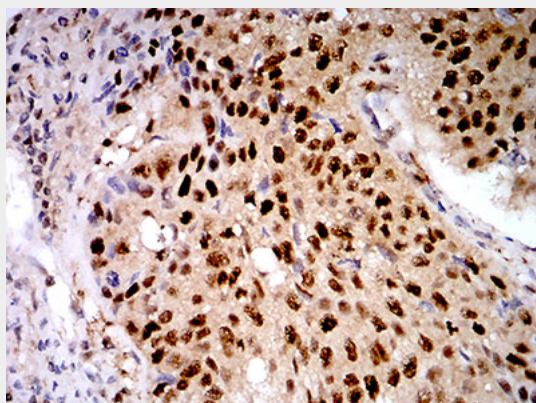


Western blot analysis using LGALS1 mAb against HEK293 (1) and LGALS1 (AA: 1-135)-hIgGFc transfected HEK293 (2) cell lysate.

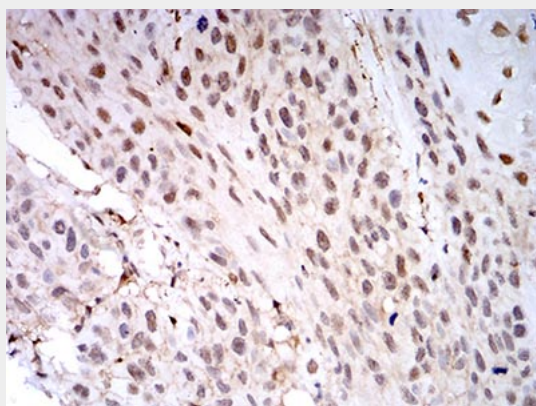


Flow cytometric analysis of Hela cells using LGALS1 mouse mAb (green) and negative control

(red).



Immunohistochemical analysis of paraffin-embedded lung cancer tissues using LGALS1 mouse mAb with DAB staining.



Immunohistochemical analysis of paraffin-embedded esophageal cancer tissues using LGALS1 mouse mAb with DAB staining.

Mouse Monoclonal Antibody to LGALS1 - References

1.Cancer Sci. 2014 Nov;105(11):1402-10. ; 2.Lung Cancer. 2014 Apr;84(1):73-8. ;