

**CLEC12A Antibody (Center)**  
**Affinity Purified Rabbit Polyclonal Antibody (Pab)**  
**Catalog # AP10037c**

**Specification**

---

**CLEC12A Antibody (Center) - Product Information**

Application	WB,E
Primary Accession	<a href="#">Q5OGZ9</a>
Other Accession	<a href="#">NP_612210.4</a> , <a href="#">NP_963917.2</a>
Reactivity	Human
Host	Rabbit
Clonality	Polyclonal
Isotype	Rabbit IgG
Antigen Region	178-206

**CLEC12A Antibody (Center) - Additional Information**

**Gene ID** 160364

**Other Names**

C-type lectin domain family 12 member A, C-type lectin-like molecule 1, CLL-1, Dendritic cell-associated lectin 2, DCAL-2, Myeloid inhibitory C-type lectin-like receptor, MICL, CLEC12A, CLL1, DCAL2, MICL

**Target/Specificity**

This CLEC12A antibody is generated from rabbits immunized with a KLH conjugated synthetic peptide between 178-206 amino acids from the Central region of human CLEC12A.

**Dilution**

WB~~1:1000

**Format**

Purified polyclonal antibody supplied in PBS with 0.09% (W/V) sodium azide. This antibody is purified through a protein A column, followed by peptide affinity purification.

**Storage**

Maintain refrigerated at 2-8°C for up to 2 weeks. For long term storage store at -20°C in small aliquots to prevent freeze-thaw cycles.

**Precautions**

CLEC12A Antibody (Center) is for research use only and not for use in diagnostic or therapeutic procedures.

**CLEC12A Antibody (Center) - Protein Information**

**Name** CLEC12A

**Synonyms** CLL1, DCAL2, MICL

**Function** Cell surface receptor that modulates signaling cascades and mediates tyrosine phosphorylation of target MAP kinases.

**Cellular Location**

Cell membrane; Single-pass type II membrane protein. Note=Ligand binding leads to internalization

**Tissue Location**

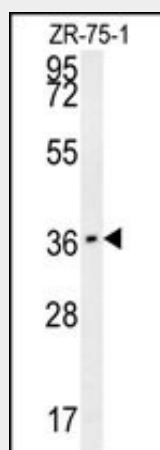
Detected in normal myeloid cells and in acute myeloid leukemia cells. Detected in neutrophils, eosinophils, monocytes and dendritic cells. Detected in spleen macrophage-rich red pulp and in lymph node (at protein level). Detected in peripheral blood leukocytes, dendritic cells, bone marrow, monocytes, mononuclear leukocytes and macrophages.

**CLEC12A Antibody (Center) - Protocols**

Provided below are standard protocols that you may find useful for product applications.

- [Western Blot](#)
- [Blocking Peptides](#)
- [Dot Blot](#)
- [Immunohistochemistry](#)
- [Immunofluorescence](#)
- [Immunoprecipitation](#)
- [Flow Cytometry](#)
- [Cell Culture](#)

**CLEC12A Antibody (Center) - Images**



CLEC12A Antibody (Center) (Cat. #AP10037c) western blot analysis in ZR-75-1 cell line lysates (35ug/lane). This demonstrates the CLEC12A antibody detected the CLEC12A protein (arrow).