

**S35B2 Antibody (C-term)**  
**Affinity Purified Rabbit Polyclonal Antibody (Pab)**  
**Catalog # AP10039b****Specification**

---

**S35B2 Antibody (C-term) - Product Information**

Application	WB, IHC-P,E
Primary Accession	<a href="#">Q8TB61</a>
Other Accession	<a href="#">NP_835361.1</a>
Reactivity	Human
Host	Rabbit
Clonality	Polyclonal
Isotype	Rabbit IgG
Antigen Region	393-421

**S35B2 Antibody (C-term) - Additional Information****Gene ID** 347734**Other Names**

Adenosine 3'-phospho 5'-phosphosulfate transporter 1, PAPS transporter 1, Putative MAPK-activating protein PM15, Putative NF-kappa-B-activating protein 48, Solute carrier family 35 member B2, SLC35B2, PAPST1

**Target/Specificity**

This S35B2 antibody is generated from rabbits immunized with a KLH conjugated synthetic peptide between 393-421 amino acids from the C-terminal region of human S35B2.

**Dilution**

WB~~1:1000  
IHC-P~~1:50~100

**Format**

Purified polyclonal antibody supplied in PBS with 0.09% (W/V) sodium azide. This antibody is purified through a protein A column, followed by peptide affinity purification.

**Storage**

Maintain refrigerated at 2-8°C for up to 2 weeks. For long term storage store at -20°C in small aliquots to prevent freeze-thaw cycles.

**Precautions**

S35B2 Antibody (C-term) is for research use only and not for use in diagnostic or therapeutic procedures.

**S35B2 Antibody (C-term) - Protein Information****Name** SLC35B2 ([HGNC:16872](#))

**Function** Probably functions as a 3'-phosphoadenylyl sulfate:adenosine 3',5'-bisphosphate antiporter at the Golgi membranes. Mediates the transport from the cytosol into the lumen of the Golgi of 3'-phosphoadenylyl sulfate/adenosine 3'-phospho 5'-phosphosulfate (PAPS), a universal sulfuryl donor for sulfation events that take place in that compartment.

**Cellular Location**

Golgi apparatus membrane; Multi-pass membrane protein

**Tissue Location**

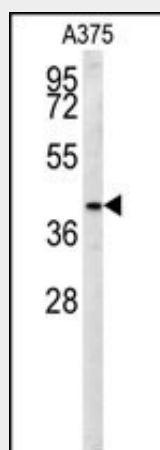
Highly expressed in the placenta, pancreas, mammary gland and skeletal muscle. Weakly or not expressed in colon, heart and prostate (PubMed:12716889). Expressed in the brain, predominantly in frontal lobe gray matter, subcortical frontal white matter and cerebellum (PubMed:35325049).

**S35B2 Antibody (C-term) - Protocols**

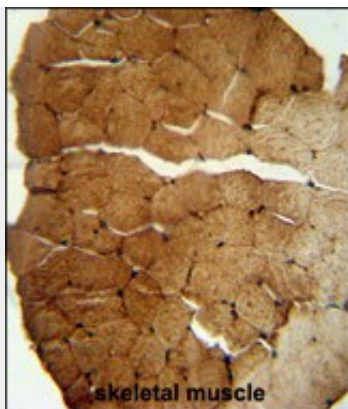
Provided below are standard protocols that you may find useful for product applications.

- [Western Blot](#)
- [Blocking Peptides](#)
- [Dot Blot](#)
- [Immunohistochemistry](#)
- [Immunofluorescence](#)
- [Immunoprecipitation](#)
- [Flow Cytometry](#)
- [Cell Culture](#)

**S35B2 Antibody (C-term) - Images**



S35B2 Antibody (C-term) (Cat. #AP10039b) western blot analysis in A375 cell line lysates (35ug/lane). This demonstrates the S35B2 antibody detected the S35B2 protein (arrow).



S35B2 antibody (C-term) (Cat. #AP10039b) immunohistochemistry analysis in formalin fixed and paraffin embedded human skeletal muscle followed by peroxidase conjugation of the secondary antibody and DAB staining. This data demonstrates the use of the S35B2 antibody (C-term) for immunohistochemistry. Clinical relevance has not been evaluated.