

**LAPTM5 Antibody (N-term)**  
**Affinity Purified Rabbit Polyclonal Antibody (Pab)**  
**Catalog # AP10077a****Specification**

---

**LAPTM5 Antibody (N-term) - Product Information**

Application	WB, IHC-P, FC,E
Primary Accession	<a href="#">Q13571</a>
Other Accession	<a href="#">Q2KJA5</a> , <a href="#">NP_006753.1</a>
Reactivity	Human
Predicted	Bovine
Host	Rabbit
Clonality	Polyclonal
Isotype	Rabbit IgG
Antigen Region	23-49

**LAPTM5 Antibody (N-term) - Additional Information****Gene ID** 7805**Other Names**

Lysosomal-associated transmembrane protein 5, Lysosomal-associated multitransmembrane protein 5, Retinoic acid-inducible E3 protein, LAPTM5, KIAA0085

**Target/Specificity**

This LAPTM5 antibody is generated from rabbits immunized with a KLH conjugated synthetic peptide between 23-49 amino acids from the N-terminal region of human LAPTM5.

**Dilution**

WB~~1:1000  
IHC-P~~1:50~100  
FC~~1:10~50

**Format**

Purified polyclonal antibody supplied in PBS with 0.09% (W/V) sodium azide. This antibody is purified through a protein A column, followed by peptide affinity purification.

**Storage**

Maintain refrigerated at 2-8°C for up to 2 weeks. For long term storage store at -20°C in small aliquots to prevent freeze-thaw cycles.

**Precautions**

LAPTM5 Antibody (N-term) is for research use only and not for use in diagnostic or therapeutic procedures.

**LAPTM5 Antibody (N-term) - Protein Information****Name** LAPTM5

**Synonyms** KIAA0085

**Function** May have a special functional role during embryogenesis and in adult hematopoietic cells.

**Cellular Location**

Lysosome membrane; Multi-pass membrane protein

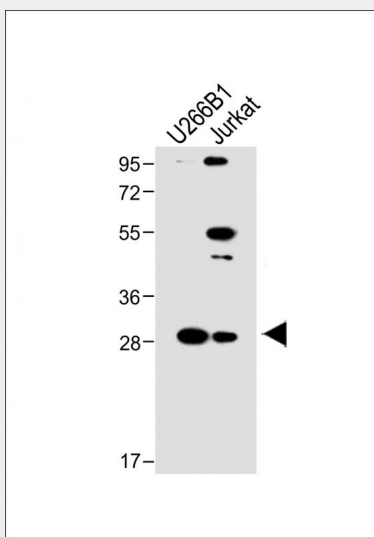
**Tissue Location**

Preferentially expressed in adult hematopoietic tissues. High levels in lymphoid and myeloid tissues. Highly expressed in peripheral blood leukocytes, thymus, spleen and lung, followed by placenta, liver and kidney.

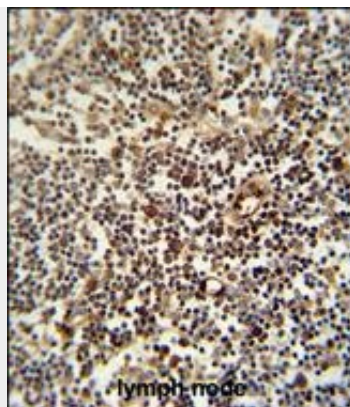
**LAPTM5 Antibody (N-term) - Protocols**

Provided below are standard protocols that you may find useful for product applications.

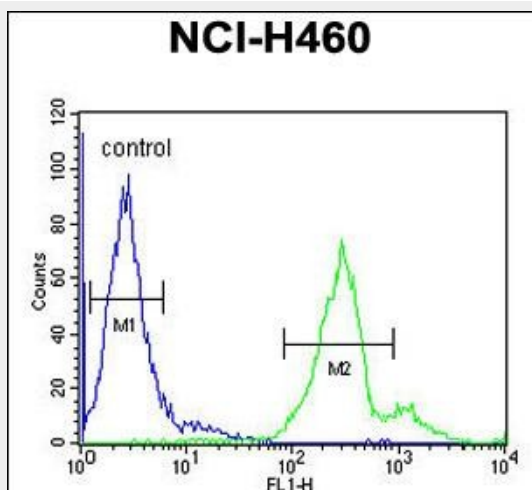
- [Western Blot](#)
- [Blocking Peptides](#)
- [Dot Blot](#)
- [Immunohistochemistry](#)
- [Immunofluorescence](#)
- [Immunoprecipitation](#)
- [Flow Cytometry](#)
- [Cell Culture](#)

**LAPTM5 Antibody (N-term) - Images**

All lanes : Anti-LAPTM5 Antibody (N-term) at 1:1000 dilution Lane 1: U266B1 whole cell lysate Lane 2: Jurkat whole cell lysate Lysates/proteins at 20 µg per lane. Secondary Goat Anti-Rabbit IgG, (H+L), Peroxidase conjugated at 1/10000 dilution. Predicted band size : 30 kDa Blocking/Dilution buffer: 5% NFDM/TBST.



LAPT5 antibody (N-term) (Cat. #AP10077a) immunohistochemistry analysis in formalin fixed and paraffin embedded human lymph node followed by peroxidase conjugation of the secondary antibody and DAB staining. This data demonstrates the use of the LAPT5 antibody (N-term) for immunohistochemistry. Clinical relevance has not been evaluated.



LAPT5 Antibody (N-term) (Cat. #AP10077a) flow cytometric analysis of NCI-H460 cells (right histogram) compared to a negative control cell (left histogram). FITC-conjugated goat-anti-rabbit secondary antibodies were used for the analysis.