

CALML4 Antibody (C-term)
Affinity Purified Rabbit Polyclonal Antibody (Pab)
Catalog # AP10243b

Specification

CALML4 Antibody (C-term) - Product Information

Application	WB,E
Primary Accession	O96GE6
Other Accession	NP_001026903.2 , NP_219501.2
Reactivity	Human, Mouse
Host	Rabbit
Clonality	Polyclonal
Isotype	Rabbit IgG
Calculated MW	21883
Antigen Region	167-196

CALML4 Antibody (C-term) - Additional Information

Gene ID 91860

Other Names

Calmodulin-like protein 4, Serologically defined breast cancer antigen NY-BR-20, CALML4

Target/Specificity

This CALML4 antibody is generated from rabbits immunized with a KLH conjugated synthetic peptide between 167-196 amino acids from the C-terminal region of human CALML4.

Dilution

WB~~1:1000

Format

Purified polyclonal antibody supplied in PBS with 0.09% (W/V) sodium azide. This antibody is purified through a protein A column, followed by peptide affinity purification.

Storage

Maintain refrigerated at 2-8°C for up to 2 weeks. For long term storage store at -20°C in small aliquots to prevent freeze-thaw cycles.

Precautions

CALML4 Antibody (C-term) is for research use only and not for use in diagnostic or therapeutic procedures.

CALML4 Antibody (C-term) - Protein Information

Name CALML4 ([HGNC:18445](#))

Function As part of the intermicrovillar adhesion complex/IMAC plays a role in epithelial brush border differentiation, controlling microvilli organization and length. Acts as a light chain for

MYO7B and is required for efficient targeting of the IMAC to the tips of border brush microvilli.

Cellular Location

[Isoform 1]: Cell projection, microvillus. Note=Enriched at the distal tips of enterocyte microvilli.

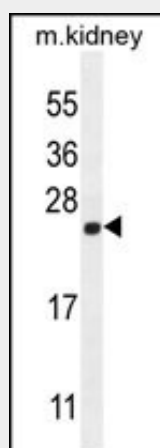
Tissue Location

[Isoform 1]: Expressed in the intestinal tract.

CALML4 Antibody (C-term) - Protocols

Provided below are standard protocols that you may find useful for product applications.

- [Western Blot](#)
- [Blocking Peptides](#)
- [Dot Blot](#)
- [Immunohistochemistry](#)
- [Immunofluorescence](#)
- [Immunoprecipitation](#)
- [Flow Cytometry](#)
- [Cell Culture](#)

CALML4 Antibody (C-term) - Images

CALML4 Antibody (C-term) (Cat. #AP10243b) western blot analysis in mouse kidney tissue lysates (35ug/lane). This demonstrates the CALML4 antibody detected the CALML4 protein (arrow).

CALML4 Antibody (C-term) - References

Scanlan, M.J., et al. Cancer Immun. 1, 4 (2001) :