

**KLF14 Antibody (C-term)**  
**Affinity Purified Rabbit Polyclonal Antibody (Pab)**  
**Catalog # AP10279b****Specification**

---

**KLF14 Antibody (C-term) - Product Information**

Application	WB, FC,E
Primary Accession	<a href="#">Q8TD94</a>
Other Accession	<a href="#">Q19A41</a> , <a href="#">NP_619638.1</a>
Reactivity	Human, Mouse
Host	Rabbit
Clonality	Polyclonal
Isotype	Rabbit IgG
Antigen Region	254-283

**KLF14 Antibody (C-term) - Additional Information****Gene ID** 136259**Other Names**

Krueppel-like factor 14, Basic transcription element-binding protein 5, BTE-binding protein 5, Transcription factor BTEB5, KLF14, BTEB5

**Target/Specificity**

This KLF14 antibody is generated from rabbits immunized with a KLH conjugated synthetic peptide between 254-283 amino acids from the C-terminal region of human KLF14.

**Dilution**

WB~~1:1000

FC~~1:10~50

**Format**

Purified polyclonal antibody supplied in PBS with 0.09% (W/V) sodium azide. This antibody is purified through a protein A column, followed by peptide affinity purification.

**Storage**

Maintain refrigerated at 2-8°C for up to 2 weeks. For long term storage store at -20°C in small aliquots to prevent freeze-thaw cycles.

**Precautions**

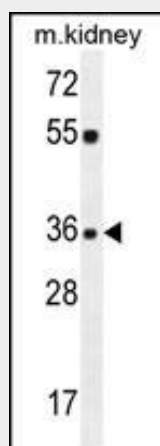
KLF14 Antibody (C-term) is for research use only and not for use in diagnostic or therapeutic procedures.

**KLF14 Antibody (C-term) - Protein Information****Name** KLF14**Synonyms** BTEB5

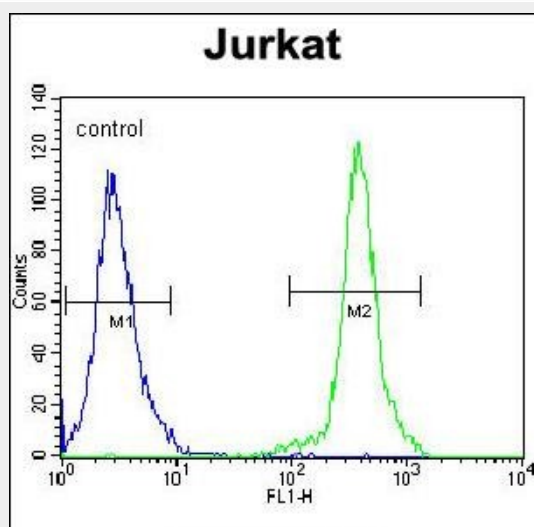
**Cellular Location**  
Nucleus.**KLF14 Antibody (C-term) - Protocols**

Provided below are standard protocols that you may find useful for product applications.

- [Western Blot](#)
- [Blocking Peptides](#)
- [Dot Blot](#)
- [Immunohistochemistry](#)
- [Immunofluorescence](#)
- [Immunoprecipitation](#)
- [Flow Cytometry](#)
- [Cell Culture](#)

**KLF14 Antibody (C-term) - Images**

KLF14 Antibody (C-term) (Cat. #AP10279b) western blot analysis in mouse kidney tissue lysates (35ug/lane). This demonstrates the KLF14 antibody detected the KLF14 protein (arrow).



KLF14 Antibody (C-term) (Cat. #AP10279b) flow cytometric analysis of Jurkat cells (right histogram) compared to a negative control cell (left histogram). FITC-conjugated goat-anti-rabbit

secondary antibodies were used for the analysis.

#### **KLF14 Antibody (C-term) - Background**

This gene encodes a member of the Kruppel-like family of transcription factors. The gene exhibits imprinted expression from the maternal allele in embryonic and extra-embryonic tissues. Expression of this gene is induced by TGF-beta, and the protein represses TGF-beta receptor II expression. The protein functions as part of a transcriptional co-repressor complex that also contains the transcriptional regulator SIN3A and histone deacetylase 2.

#### **KLF14 Antibody (C-term) - References**

Voight, B.F., et al. Nat. Genet. 42(7):579-589(2010) Chasman, D.I., et al. PLoS Genet. 5 (11), E1000730 (2009) : Stacey, S.N., et al. Nat. Genet. 41(8):909-914(2009) Truty, M.J., et al. J. Biol. Chem. 284(10):6291-6300(2009) Parker-Katiraei, L., et al. PLoS Genet. 3 (5), E65 (2007) :