

**PDE12 Antibody (C-term)**  
**Affinity Purified Rabbit Polyclonal Antibody (Pab)**  
**Catalog # AP10288b**

**Specification**

---

**PDE12 Antibody (C-term) - Product Information**

|                   |  |
|-------------------|--|
| Application       | WB, FC,E   |
| Primary Accession | <a href="#">Q6L8Q7</a>   |
| Other Accession   | <a href="#">Q6AXQ5</a> , <a href="#">Q3TIU4</a> , <a href="#">Q08DF7</a> , <a href="#">NP_808881.3</a> |
| Reactivity        | Human  |
| Predicted         | Bovine, Mouse, Rat   |
| Host              | Rabbit   |
| Clonality         | Polyclonal   |
| Isotype           | Rabbit IgG   |
| Calculated MW     | 67352  |
| Antigen Region    | 362-390  |

**PDE12 Antibody (C-term) - Additional Information**

**Gene ID** 201626

**Other Names**

2', 5'-phosphodiesterase 12, 2'-PDE, 2-PDE, 314-, Mitochondrial deadenylase, PDE12

**Target/Specificity**

This PDE12 antibody is generated from rabbits immunized with a KLH conjugated synthetic peptide between 362-390 amino acids from the C-terminal region of human PDE12.

**Dilution**

WB~~1:1000  
FC~~1:10~50

**Format**

Purified polyclonal antibody supplied in PBS with 0.09% (W/V) sodium azide. This antibody is purified through a protein A column, followed by peptide affinity purification.

**Storage**

Maintain refrigerated at 2-8°C for up to 2 weeks. For long term storage store at -20°C in small aliquots to prevent freeze-thaw cycles.

**Precautions**

PDE12 Antibody (C-term) is for research use only and not for use in diagnostic or therapeutic procedures.

**PDE12 Antibody (C-term) - Protein Information**

**Name** PDE12

**Function** Enzyme that cleaves 2',5'-phosphodiester bond linking adenosines of the 5'-triphosphorylated oligoadenylates, triphosphorylated oligoadenylates referred as 2-5A modulates the 2-5A system. Degrades triphosphorylated 2-5A to produce AMP and ATP (PubMed:[26055709](#)). Also cleaves 3',5'-phosphodiester bond of oligoadenylates (PubMed:[21666256](#), PubMed:[30389976](#), PubMed:[26055709](#)). Plays a role as a negative regulator of the 2-5A system that is one of the major pathways for antiviral and antitumor functions induced by interferons (IFNs). Suppression of this enzyme increases cellular 2-5A levels and decreases viral replication in cultured small-airway epithelial cells and Hela cells (PubMed:[26055709](#)).

**Cellular Location**

Mitochondrion matrix

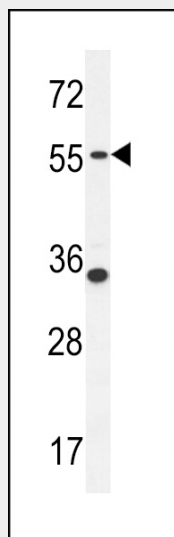
**Tissue Location**

Ubiquitous..

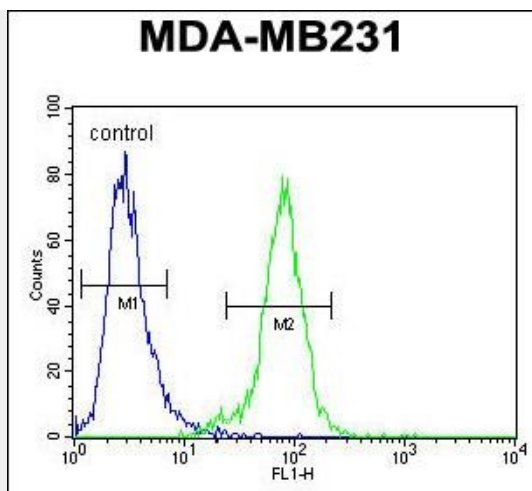
**PDE12 Antibody (C-term) - Protocols**

Provided below are standard protocols that you may find useful for product applications.

- [Western Blot](#)
- [Blocking Peptides](#)
- [Dot Blot](#)
- [Immunohistochemistry](#)
- [Immunofluorescence](#)
- [Immunoprecipitation](#)
- [Flow Cytometry](#)
- [Cell Culture](#)

**PDE12 Antibody (C-term) - Images**

PDE12 Antibody (C-term) (Cat. #AP10288b) western blot analysis in MDA-MB231 cell line lysates (35ug/lane). This demonstrates the PDE12 antibody detected the PDE12 protein (arrow).



PDE12 Antibody (C-term) (Cat. #AP10288b) flow cytometric analysis of MDA-MB231 cells (right histogram) compared to a negative control cell (left histogram). FITC-conjugated goat-anti-rabbit secondary antibodies were used for the analysis.

#### **PDE12 Antibody (C-term) - References**

Kohno, T., et al. Acta Crystallogr. Sect. F Struct. Biol. Cryst. Commun. 66 (PT 5), 520-522 (2010) :  
Kubota, K., et al. J. Biol. Chem. 279(36):37832-37841(2004)