

PEAR1 Antibody (C-term)
Affinity Purified Rabbit Polyclonal Antibody (Pab)
Catalog # AP10334B

Specification

PEAR1 Antibody (C-term) - Product Information

Application	WB, IHC-P,E
Primary Accession	Q5VY43
Other Accession	NP_001073940.1
Reactivity	Human
Host	Rabbit
Clonality	Polyclonal
Isotype	Rabbit IgG
Calculated MW	110666
Antigen Region	961-990

PEAR1 Antibody (C-term) - Additional Information

Gene ID 375033

Other Names

Platelet endothelial aggregation receptor 1, hPEAR1, Multiple epidermal growth factor-like domains protein 12, Multiple EGF-like domains protein 12, PEAR1, MEGF12

Target/Specificity

This PEAR1 antibody is generated from rabbits immunized with a KLH conjugated synthetic peptide between 961-990 amino acids from the C-terminal region of human PEAR1.

Dilution

WB~~1:1000
IHC-P~~1:50~100

Format

Purified polyclonal antibody supplied in PBS with 0.09% (W/V) sodium azide. This antibody is purified through a protein A column, followed by peptide affinity purification.

Storage

Maintain refrigerated at 2-8°C for up to 2 weeks. For long term storage store at -20°C in small aliquots to prevent freeze-thaw cycles.

Precautions

PEAR1 Antibody (C-term) is for research use only and not for use in diagnostic or therapeutic procedures.

PEAR1 Antibody (C-term) - Protein Information

Name PEAR1

Synonyms MEGF12

Function Required for SVEP1-mediated platelet activation, via its interaction with SVEP1 and subsequent activation of AKT/mTOR signaling (PubMed:[36792666](#)). May be involved in the early stages of hematopoiesis (By similarity).

Cellular Location

Cell membrane; Single-pass membrane protein. Cell projection, lamellipodium. Note=Detected on the cell surface in resting platelets.

Tissue Location

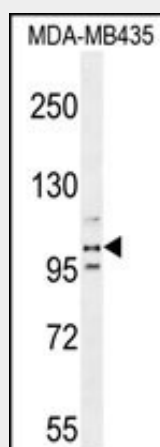
Expressed in umbilical vein endothelial cells and platelets (at protein level) (PubMed:15851471, PubMed:36792666) Expressed in coronary artery smooth muscle cells (at protein level) (PubMed:36792666). Expressed in heart, kidney, skeletal muscle, pancreas, ovary, breast, lung, brain cortex, hypothalamus, spinal cord, dorsal root ganglion (PubMed:15851471). Expressed in umbilical artery endothelial cells, megakaryocytes, osteoblasts, coronary muscle and erythroid cells (PubMed:15851471).

PEAR1 Antibody (C-term) - Protocols

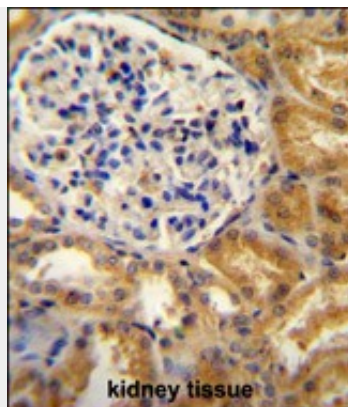
Provided below are standard protocols that you may find useful for product applications.

- [Western Blot](#)
- [Blocking Peptides](#)
- [Dot Blot](#)
- [Immunohistochemistry](#)
- [Immunofluorescence](#)
- [Immunoprecipitation](#)
- [Flow Cytometry](#)
- [Cell Culture](#)

PEAR1 Antibody (C-term) - Images



PEAR1 Antibody (C-term) (Cat. #AP10334b) western blot analysis in MDA-MB435 cell line lysates (35ug/lane). This demonstrates the PEAR1 antibody detected the PEAR1 protein (arrow).



PEAR1 antibody (C-term) (Cat. #AP10334b) immunohistochemistry analysis in formalin fixed and paraffin embedded human kidney tissue followed by peroxidase conjugation of the secondary antibody and DAB staining. This data demonstrates the use of the PEAR1 antibody (C-term) for immunohistochemistry. Clinical relevance has not been evaluated.

PEAR1 Antibody (C-term) - Background

PEAR1 is a platelet receptor that signals upon the formation of platelet-platelet contacts independent of platelet activation and secondary to platelet aggregation (Nanda et al., 2005 [PubMed 15851471]).

PEAR1 Antibody (C-term) - References

- Johnson, A.D., et al. Nat. Genet. 42(7):608-613(2010)
- Jones, C.I., et al. Blood 114(7):1405-1416(2009)
- Herrera-Galeano, J.E., et al. Arterioscler. Thromb. Vasc. Biol. 28(8):1484-1490(2008)
- Nanda, N., et al. J. Biol. Chem. 280(26):24680-24689(2005)
- Nanda, N., et al. J. Biol. Chem. 280(26):24680-24689(2005)