

**SPDYE3 Antibody (Center)**  
**Affinity Purified Rabbit Polyclonal Antibody (Pab)**  
**Catalog # AP10357c****Specification**

---

**SPDYE3 Antibody (Center) - Product Information**

Application	WB, IHC-P, FC,E
Primary Accession	<a href="#">A6NKU9</a>
Other Accession	<a href="#">NP_001004351.3</a>
Reactivity	Human
Host	Rabbit
Clonality	Polyclonal
Isotype	Rabbit IgG
Calculated MW	63895
Antigen Region	455-483

**SPDYE3 Antibody (Center) - Additional Information****Gene ID** 441272**Other Names**

Speedy protein E3, SPDYE3

**Target/Specificity**

This SPDYE3 antibody is generated from rabbits immunized with a KLH conjugated synthetic peptide between 455-483 amino acids from the Central region of human SPDYE3.

**Dilution**

WB~~1:1000  
IHC-P~~1:50~100  
FC~~1:10~50

**Format**

Purified polyclonal antibody supplied in PBS with 0.09% (W/V) sodium azide. This antibody is purified through a protein A column, followed by peptide affinity purification.

**Storage**

Maintain refrigerated at 2-8°C for up to 2 weeks. For long term storage store at -20°C in small aliquots to prevent freeze-thaw cycles.

**Precautions**

SPDYE3 Antibody (Center) is for research use only and not for use in diagnostic or therapeutic procedures.

**SPDYE3 Antibody (Center) - Protein Information****Name** SPDYE3 ([HGNC:35462](#))

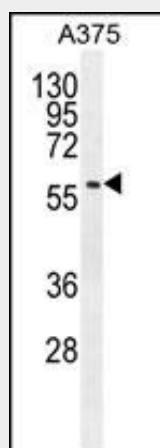
**Tissue Location**

Predominantly expressed in testis and spleen.

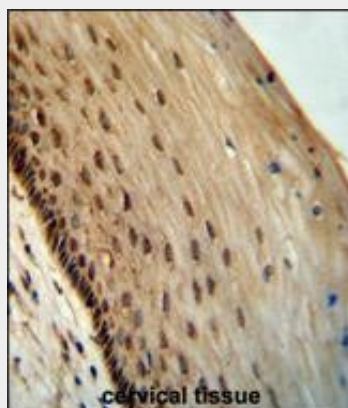
**SPDYE3 Antibody (Center) - Protocols**

Provided below are standard protocols that you may find useful for product applications.

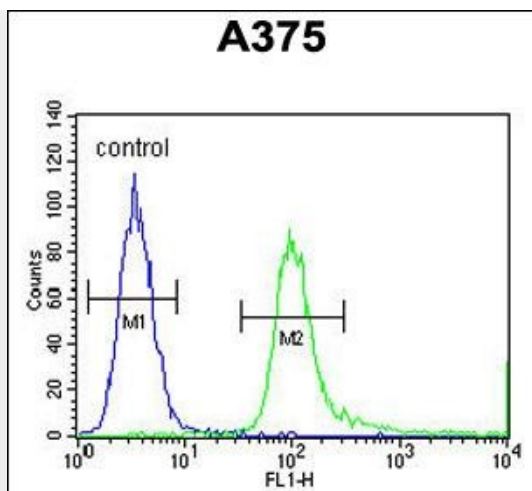
- [Western Blot](#)
- [Blocking Peptides](#)
- [Dot Blot](#)
- [Immunohistochemistry](#)
- [Immunofluorescence](#)
- [Immunoprecipitation](#)
- [Flow Cytometry](#)
- [Cell Culture](#)

**SPDYE3 Antibody (Center) - Images**

SPDYE3 Antibody (Center) (Cat. #AP10357c) western blot analysis in A375 cell line lysates (35ug/lane). This demonstrates the SPDYE3 antibody detected the SPDYE3 protein (arrow).



SPDYE3 antibody (Center) (Cat. #AP10357c) immunohistochemistry analysis in formalin fixed and paraffin embedded human cervical tissue followed by peroxidase conjugation of the secondary antibody and DAB staining. This data demonstrates the use of the SPDYE3 antibody (Center) for immunohistochemistry. Clinical relevance has not been evaluated.



SPDYE3 Antibody (Center) (Cat. #AP10357c) flow cytometric analysis of A375 cells (right histogram) compared to a negative control cell (left histogram). FITC-conjugated goat-anti-rabbit secondary antibodies were used for the analysis.

#### **SPDYE3 Antibody (Center) - References**

Gerhard, D.S., et al. Genome Res. 14 (10B), 2121-2127 (2004) :  
Hillier, L.W., et al. Nature 424(6945):157-164(2003)  
Scherer, S.W., et al. Science 300(5620):767-772(2003)