

CC85C Antibody (N-term)
Affinity Purified Rabbit Polyclonal Antibody (Pab)
Catalog # AP10512a**Specification**

CC85C Antibody (N-term) - Product Information

| | |
|-------------------|---|
| Application | WB, IHC-P, FC,E |
| Primary Accession | A6NKD9 |
| Other Accession | E9Q6B2 , NP_001138467.1 |
| Reactivity | Human |
| Predicted | Mouse |
| Host | Rabbit |
| Clonality | Polyclonal |
| Isotype | Rabbit IgG |
| Calculated MW | 45210 |
| Antigen Region | 56-85 |

CC85C Antibody (N-term) - Additional Information**Gene ID** 317762**Other Names**

Coiled-coil domain-containing protein 85C, CCDC85C

Target/Specificity

This CC85C antibody is generated from rabbits immunized with a KLH conjugated synthetic peptide between 56-85 amino acids from the N-terminal region of human CC85C.

Dilution

WB~~1:1000
IHC-P~~1:10~50
FC~~1:10~50

Format

Purified polyclonal antibody supplied in PBS with 0.09% (W/V) sodium azide. This antibody is purified through a protein A column, followed by peptide affinity purification.

Storage

Maintain refrigerated at 2-8°C for up to 2 weeks. For long term storage store at -20°C in small aliquots to prevent freeze-thaw cycles.

Precautions

CC85C Antibody (N-term) is for research use only and not for use in diagnostic or therapeutic procedures.

CC85C Antibody (N-term) - Protein Information**Name** CCDC85C

Function May play a role in cell-cell adhesion and epithelium development through its interaction with proteins of the beta-catenin family (Probable). May play an important role in cortical development, especially in the maintenance of radial glia (By similarity).

Cellular Location

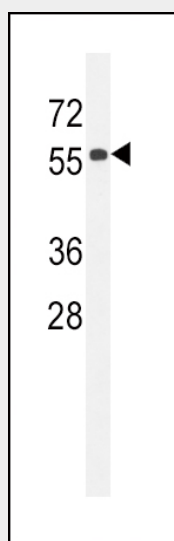
Cell junction, tight junction {ECO:0000250|UniProtKB:E9Q6B2}. Cell junction, adherens junction. Note=Localizes to the apical junction of radial glia in the wall of lateral ventricles of the developing brain Colocalizes with TJP1 on the meshwork-like structure of adherens junctions on the lateral ventricles wall {ECO:0000250|UniProtKB:E9Q6B2}

CC85C Antibody (N-term) - Protocols

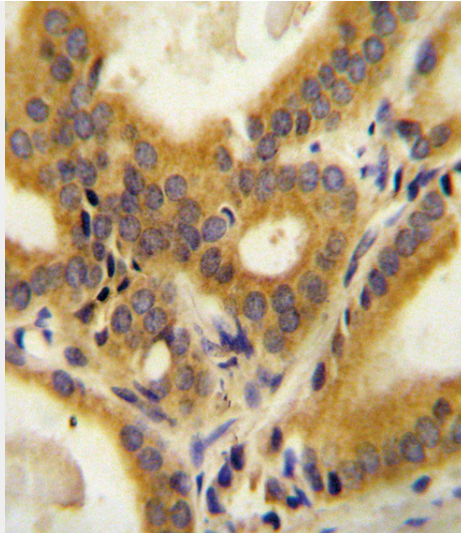
Provided below are standard protocols that you may find useful for product applications.

- [Western Blot](#)
- [Blocking Peptides](#)
- [Dot Blot](#)
- [Immunohistochemistry](#)
- [Immunofluorescence](#)
- [Immunoprecipitation](#)
- [Flow Cytometry](#)
- [Cell Culture](#)

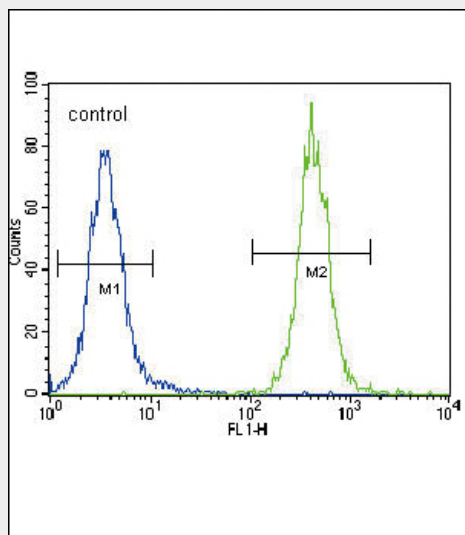
CC85C Antibody (N-term) - Images



CC85C Antibody (N-term) (Cat. #AP10512a) western blot analysis in 293 cell line lysates (35ug/lane). This demonstrates the CC85C antibody detected the CC85C protein (arrow).



CC85C Antibody (N-term) (Cat. #AP10512a) immunohistochemistry analysis in formalin fixed and paraffin embedded human prostate carcinoma followed by peroxidase conjugation of the secondary antibody and DAB staining. This data demonstrates the use of the CC85C Antibody (N-term) for immunohistochemistry. Clinical relevance has not been evaluated.



CC85C Antibody (N-term) (Cat. #AP10512a) flow cytometric analysis of 293 cells (right histogram) compared to a negative control cell (left histogram). FITC-conjugated goat-anti-rabbit secondary antibodies were used for the analysis.

CC85C Antibody (N-term) - References

Heilig, R., et al. Nature 421(6923):601-607(2003)
Venter, J.C., et al. Science 291(5507):1304-1351(2001)