

**DEN5A Antibody (Center)**  
**Affinity Purified Rabbit Polyclonal Antibody (Pab)**  
**Catalog # AP10513c****Specification**

---

**DEN5A Antibody (Center) - Product Information**

Application	WB, FC,E
Primary Accession	<a href="#">Q6IQ26</a>
Other Accession	<a href="#">Q6PAL8</a> , <a href="#">NP_056028.2</a> , <a href="#">G3V7Q0</a>
Reactivity	Human
Predicted	Mouse, Rat
Host	Rabbit
Clonality	Polyclonal
Isotype	Rabbit IgG
Calculated MW	147096
Antigen Region	695-724

**DEN5A Antibody (Center) - Additional Information****Gene ID** 23258**Other Names**

DENN domain-containing protein 5A, Rab6-interacting protein 1, Rab6IP1, DENND5A, KIAA1091, RAB6IP1

**Target/Specificity**

This DEN5A antibody is generated from rabbits immunized with a KLH conjugated synthetic peptide between 695-724 amino acids from the Central region of human DEN5A.

**Dilution**WB~~1:1000  
FC~~1:10~50**Format**

Purified polyclonal antibody supplied in PBS with 0.09% (W/V) sodium azide. This antibody is purified through a protein A column, followed by peptide affinity purification.

**Storage**

Maintain refrigerated at 2-8°C for up to 2 weeks. For long term storage store at -20°C in small aliquots to prevent freeze-thaw cycles.

**Precautions**

DEN5A Antibody (Center) is for research use only and not for use in diagnostic or therapeutic procedures.

**DEN5A Antibody (Center) - Protein Information****Name** DENND5A

**Synonyms** KIAA1091, RAB6IP1

**Function** Guanine nucleotide exchange factor (GEF) which may activate RAB6A and RAB39A and/or RAB39B. Promotes the exchange of GDP to GTP, converting inactive GDP-bound Rab proteins into their active GTP-bound form. Involved in the negative regulation of neurite outgrowth (By similarity).

**Cellular Location**

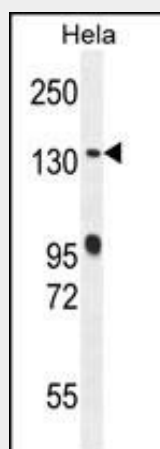
Golgi apparatus membrane {ECO:0000250|UniProtKB:Q6PAL8}

**DEN5A Antibody (Center) - Protocols**

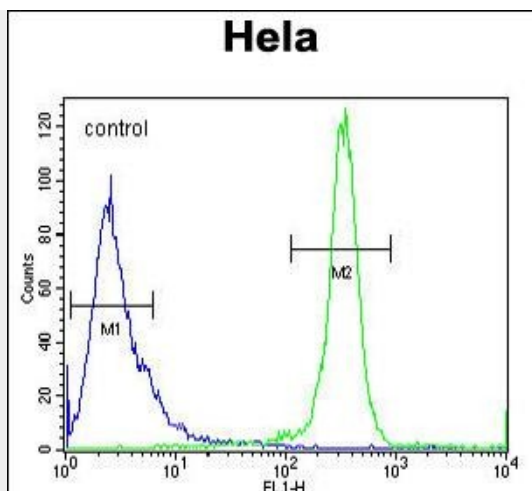
Provided below are standard protocols that you may find useful for product applications.

- [Western Blot](#)
- [Blocking Peptides](#)
- [Dot Blot](#)
- [Immunohistochemistry](#)
- [Immunofluorescence](#)
- [Immunoprecipitation](#)
- [Flow Cytometry](#)
- [Cell Culture](#)

**DEN5A Antibody (Center) - Images**



DEN5A Antibody (Center) (Cat. #AP10513c) western blot analysis in HeLa cell line lysates (35ug/lane). This demonstrates the DEN5A antibody detected the DEN5A protein (arrow).



DEN5A Antibody (Center) (Cat. #AP10513c) flow cytometric analysis of HeLa cells (right histogram) compared to a negative control cell (left histogram). FITC-conjugated goat-anti-rabbit secondary antibodies were used for the analysis.

#### **DEN5A Antibody (Center) - Background**

May be involved in Rab6-mediated GTPase signaling.

#### **DEN5A Antibody (Center) - References**

- Recacha, R., et al. Structure 17(1):21-30(2009)  
Olsen, J.V., et al. Cell 127(3):635-648(2006)  
Janoueix-Lerosey, I., et al. J. Biol. Chem. 270(24):14801-14808(1995)