

**LRRC57 Antibody (C-term)**  
**Affinity Purified Rabbit Polyclonal Antibody (Pab)**  
**Catalog # AP10537B****Specification**

---

**LRRC57 Antibody (C-term) - Product Information**

Application	WB, IHC-P, FC,E
Primary Accession	<a href="#">Q8N9N7</a>
Other Accession	<a href="#">Q5FVI3</a> , <a href="#">NP_694992.2</a>
Reactivity	Human
Predicted	Rat
Host	Rabbit
Clonality	Polyclonal
Isotype	Rabbit IgG
Calculated MW	26754
Antigen Region	198-227

**LRRC57 Antibody (C-term) - Additional Information****Gene ID** 255252**Other Names**

Leucine-rich repeat-containing protein 57, LRRC57

**Target/Specificity**

This LRRC57 antibody is generated from rabbits immunized with a KLH conjugated synthetic peptide between 198-227 amino acids from the C-terminal region of human LRRC57.

**Dilution**

WB~~1:1000  
IHC-P~~1:50~100  
FC~~1:10~50

**Format**

Purified polyclonal antibody supplied in PBS with 0.09% (W/V) sodium azide. This antibody is purified through a protein A column, followed by peptide affinity purification.

**Storage**

Maintain refrigerated at 2-8°C for up to 2 weeks. For long term storage store at -20°C in small aliquots to prevent freeze-thaw cycles.

**Precautions**

LRRC57 Antibody (C-term) is for research use only and not for use in diagnostic or therapeutic procedures.

**LRRC57 Antibody (C-term) - Protein Information****Name** LRRC57

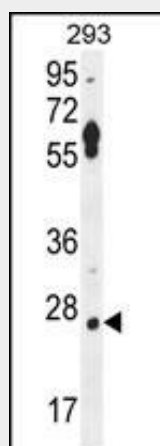
**Cellular Location**

Membrane; Lipid-anchor

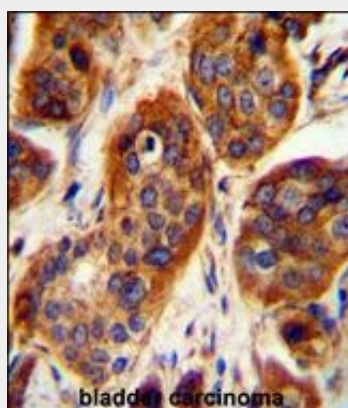
**LRRC57 Antibody (C-term) - Protocols**

Provided below are standard protocols that you may find useful for product applications.

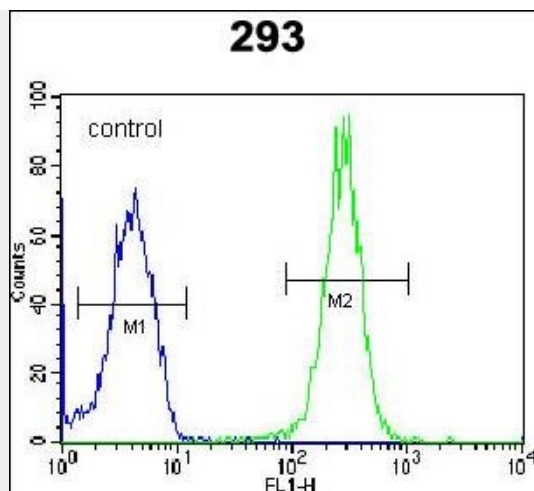
- [Western Blot](#)
- [Blocking Peptides](#)
- [Dot Blot](#)
- [Immunohistochemistry](#)
- [Immunofluorescence](#)
- [Immunoprecipitation](#)
- [Flow Cytometry](#)
- [Cell Culture](#)

**LRRC57 Antibody (C-term) - Images**

LRRC57 Antibody (C-term) (Cat. #AP10537b) western blot analysis in 293 cell line lysates (35ug/lane). This demonstrates the LRRC57 antibody detected the LRRC57 protein (arrow).



LRRC57 Antibody (C-term) (Cat. #AP10537b) immunohistochemistry analysis in formalin fixed and paraffin embedded human bladder carcinoma followed by peroxidase conjugation of the secondary antibody and DAB staining. This data demonstrates the use of the LRRC57 Antibody (C-term) for immunohistochemistry. Clinical relevance has not been evaluated.



LRRC57 Antibody (C-term) (Cat. #AP10537b) flow cytometric analysis of 293 cells (right histogram) compared to a negative control cell (left histogram). FITC-conjugated goat-anti-rabbit secondary antibodies were used for the analysis.

#### **LRRC57 Antibody (C-term) - Background**

LRRC57 contains 7 LRR (leucine rich repeats). However, the exact function remains unknown.

#### **LRRC57 Antibody (C-term) - References**

Lamesch, P., et al. Genomics 89(3):307-315(2007)