

RTP4 Antibody (C-term)
Affinity Purified Rabbit Polyclonal Antibody (Pab)
Catalog # AP10538b

Specification

RTP4 Antibody (C-term) - Product Information

Application	WB, FC,E
Primary Accession	O96DX8
Other Accession	NP_071430.2
Reactivity	Human
Host	Rabbit
Clonality	Polyclonal
Isotype	Rabbit IgG
Antigen Region	186-215

RTP4 Antibody (C-term) - Additional Information

Gene ID 64108

Other Names

Receptor-transporting protein 4, 28 kDa interferon-responsive protein, RTP4, IFRG28

Target/Specificity

This RTP4 antibody is generated from rabbits immunized with a KLH conjugated synthetic peptide between 186-215 amino acids from the C-terminal region of human RTP4.

Dilution

WB~~1:1000
FC~~1:10~50

Format

Purified polyclonal antibody supplied in PBS with 0.09% (W/V) sodium azide. This antibody is purified through a protein A column, followed by peptide affinity purification.

Storage

Maintain refrigerated at 2-8°C for up to 2 weeks. For long term storage store at -20°C in small aliquots to prevent freeze-thaw cycles.

Precautions

RTP4 Antibody (C-term) is for research use only and not for use in diagnostic or therapeutic procedures.

RTP4 Antibody (C-term) - Protein Information

Name RTP4

Synonyms IFRG28, Z3CXXC4

Function Probable chaperone protein which facilitates trafficking and functional cell surface expression of some G-protein coupled receptors (GPCRs). Promotes functional expression of the bitter taste receptor TAS2R16 (PubMed:[16720576](#)). Also promotes functional expression of the opioid receptor heterodimer OPRD1-OPRM1 (By similarity).

Cellular Location

Membrane; Single-pass type III membrane protein

Tissue Location

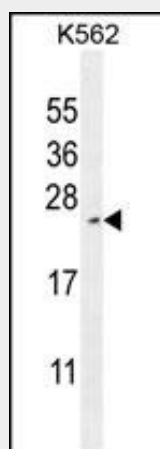
Expressed in circumvallate papillae and testis.

RTP4 Antibody (C-term) - Protocols

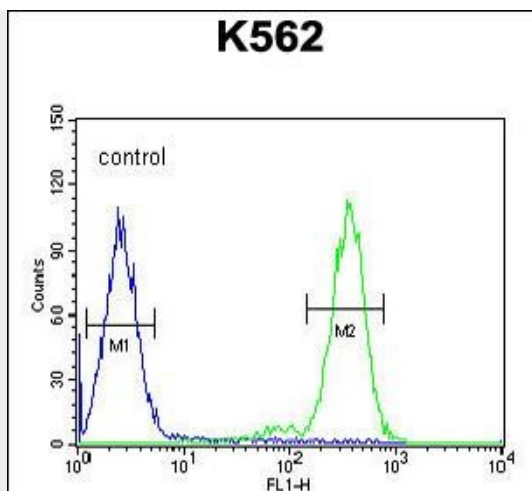
Provided below are standard protocols that you may find useful for product applications.

- [Western Blot](#)
- [Blocking Peptides](#)
- [Dot Blot](#)
- [Immunohistochemistry](#)
- [Immunofluorescence](#)
- [Immunoprecipitation](#)
- [Flow Cytometry](#)
- [Cell Culture](#)

RTP4 Antibody (C-term) - Images



RTP4 Antibody (C-term) (Cat. #AP10538b) western blot analysis in K562 cell line lysates (35ug/lane). This demonstrates the RTP4 antibody detected the RTP4 protein (arrow).



RTP4 Antibody (C-term) (Cat. #AP10538b) flow cytometric analysis of K562 cells (right histogram) compared to a negative control(left histogram).FITC-conjugated goat-anti-rabbit secondary antibodies were used for the analysis.

RTP4 Antibody (C-term) - Background

RTP4 belongs to the TMEM7 family. The function of this protein remains unknown.

RTP4 Antibody (C-term) - References

Behrens, M., et al. J. Biol. Chem. 281(29):20650-20659(2006)
Clark, A.J., et al. Trends Endocrinol. Metab. 16(10):451-457(2005)
Saito, H., et al. Cell 119(5):679-691(2004)