

CLEC10A Antibody (N-term)
Affinity Purified Rabbit Polyclonal Antibody (Pab)
Catalog # AP10558a**Specification**

CLEC10A Antibody (N-term) - Product Information

Application	WB, FC,E
Primary Accession	Q8IUJ9
Other Accession	NP_878910.1 , NP_006335.2
Reactivity	Human
Host	Rabbit
Clonality	Polyclonal
Isotype	Rabbit IgG
Calculated MW	35446
Antigen Region	1-30

CLEC10A Antibody (N-term) - Additional Information**Gene ID** 10462**Other Names**

C-type lectin domain family 10 member A, C-type lectin superfamily member 14, Macrophage lectin 2, CD301, CLEC10A, CLECSF13, CLECSF14, HML

Target/Specificity

This CLEC10A antibody is generated from rabbits immunized with a KLH conjugated synthetic peptide between 1-30 amino acids from the N-terminal region of human CLEC10A.

Dilution

WB~~1:1000
FC~~1:10~50

Format

Purified polyclonal antibody supplied in PBS with 0.09% (W/V) sodium azide. This antibody is purified through a protein A column, followed by peptide affinity purification.

Storage

Maintain refrigerated at 2-8°C for up to 2 weeks. For long term storage store at -20°C in small aliquots to prevent freeze-thaw cycles.

Precautions

CLEC10A Antibody (N-term) is for research use only and not for use in diagnostic or therapeutic procedures.

CLEC10A Antibody (N-term) - Protein Information**Name** CLEC10A

Synonyms CLECSF13, CLECSF14, HML

Function Probable role in regulating adaptive and innate immune responses. Binds in a calcium-dependent manner to terminal galactose and N-acetylgalactosamine units, linked to serine or threonine. These sugar moieties are known as Tn-Ag and are expressed in a variety of carcinoma cells.

Cellular Location

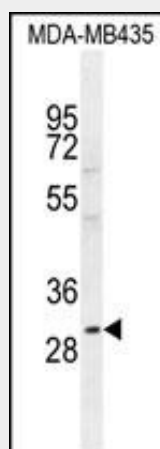
Membrane; Single-pass type II membrane protein

CLEC10A Antibody (N-term) - Protocols

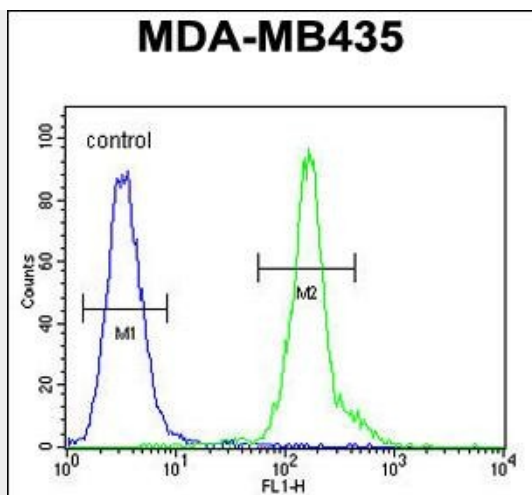
Provided below are standard protocols that you may find useful for product applications.

- [Western Blot](#)
- [Blocking Peptides](#)
- [Dot Blot](#)
- [Immunohistochemistry](#)
- [Immunofluorescence](#)
- [Immunoprecipitation](#)
- [Flow Cytometry](#)
- [Cell Culture](#)

CLEC10A Antibody (N-term) - Images



CLEC10A Antibody (N-term) (Cat. #AP10558a) western blot analysis in MDA-MB435 cell line lysates (35ug/lane). This demonstrates the CLEC10A antibody detected the CLEC10A protein (arrow).



CLEC10A Antibody (N-term) (Cat. #AP10558a) flow cytometric analysis of MDA-MB435 cells (right histogram) compared to a negative control cell (left histogram). FITC-conjugated goat-anti-rabbit secondary antibodies were used for the analysis.

CLEC10A Antibody (N-term) - Background

CLEC10A encodes a member of the C-type lectin/C-type lectin-like domain (CTL/CTLD) superfamily. Members of this family share a common protein fold and have diverse functions, such as cell adhesion, cell-cell signalling, glycoprotein turnover, and roles in inflammation and immune response. The encoded type 2 transmembrane protein may function as a cell surface antigen. Two transcript variants encoding distinct isoforms have been identified for this gene.

CLEC10A Antibody (N-term) - References

Davila, S., et al. Genes Immun. 11(3):232-238(2010)
Iijima, M., et al. Neurology 73(17):1348-1352(2009)
van Vliet, S.J., et al. PLoS Pathog. 5 (10), E1000625 (2009) :
Suzuki, N., et al. J. Immunol. 156(1):128-135(1996)