

**DEGS2 Antibody (C-term)**  
**Affinity Purified Rabbit Polyclonal Antibody (Pab)**  
**Catalog # AP10582B****Specification**

---

**DEGS2 Antibody (C-term) - Product Information**

Application	WB, IHC-P,E
Primary Accession	<a href="#">Q6QHC5</a>
Other Accession	<a href="#">Q8R2F2</a> , <a href="#">Q0II71</a> , <a href="#">NP_996801.2</a>
Reactivity	Human
Predicted	Bovine, Mouse
Host	Rabbit
Clonality	Polyclonal
Isotype	Rabbit IgG
Calculated MW	37197
Antigen Region	261-290

**DEGS2 Antibody (C-term) - Additional Information****Gene ID** 123099**Other Names**

Sphingolipid delta(4)-desaturase/C4-hydroxylase DES2, 1---, 114--, Degenerative spermatocyte homolog 2, DEGS2 (<a href="http://www.genenames.org/cgi-bin/gene\_symbol\_report?hgnc\_id=20113" target="\_blank">HGNC:20113</a>), C14orf66

**Target/Specificity**

This DEGS2 antibody is generated from rabbits immunized with a KLH conjugated synthetic peptide between 261-290 amino acids from the C-terminal region of human DEGS2.

**Dilution**

WB~~1:1000  
IHC-P~~1:50~100

**Format**

Purified polyclonal antibody supplied in PBS with 0.09% (W/V) sodium azide. This antibody is purified through a protein A column, followed by peptide affinity purification.

**Storage**

Maintain refrigerated at 2-8°C for up to 2 weeks. For long term storage store at -20°C in small aliquots to prevent freeze-thaw cycles.

**Precautions**

DEGS2 Antibody (C-term) is for research use only and not for use in diagnostic or therapeutic procedures.

**DEGS2 Antibody (C-term) - Protein Information**

**Name** DEGS2 ([HGNC:20113](#))

**Synonyms** C14orf66

**Function** Bifunctional enzyme which acts both as a sphingolipid delta(4)-desaturase and a sphingolipid C4-monooxygenase.

**Cellular Location**

Endoplasmic reticulum membrane {ECO:0000250|UniProtKB:Q8R2F2}; Multi-pass membrane protein {ECO:0000250|UniProtKB:Q8R2F2}

**Tissue Location**

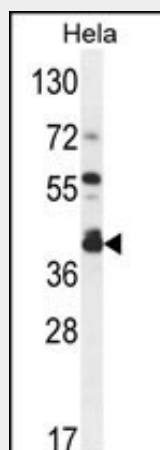
Highly expressed in skin, intestine and kidney.

**DEGS2 Antibody (C-term) - Protocols**

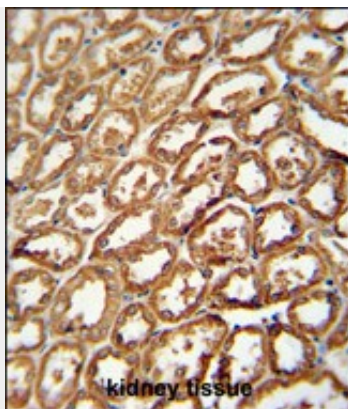
Provided below are standard protocols that you may find useful for product applications.

- [Western Blot](#)
- [Blocking Peptides](#)
- [Dot Blot](#)
- [Immunohistochemistry](#)
- [Immunofluorescence](#)
- [Immunoprecipitation](#)
- [Flow Cytometry](#)
- [Cell Culture](#)

**DEGS2 Antibody (C-term) - Images**



DEGS2 Antibody (C-term) (Cat. #AP10582b) western blot analysis in HeLa cell line lysates (35ug/lane). This demonstrates the DEGS2 antibody detected the DEGS2 protein (arrow).



DEGS2 antibody (C-term) (Cat. #AP10582b) immunohistochemistry analysis in formalin fixed and paraffin embedded human kidney tissue followed by peroxidase conjugation of the secondary antibody and DAB staining. This data demonstrates the use of the DEGS2 antibody (C-term) for immunohistochemistry. Clinical relevance has not been evaluated.

#### **DEGS2 Antibody (C-term) - Background**

DEGS2 encodes a bifunctional enzyme that is involved in the biosynthesis of phytosphingolipids in human skin and in other phytosphingolipid-containing tissues. This enzyme can act as a sphingolipid delta(4)-desaturase, and also as a sphingolipid C4-hydroxylase.

#### **DEGS2 Antibody (C-term) - References**

Shimada, M., et al. Hum. Genet. 128(4):433-441(2010)  
Oh, J.H., et al. Mamm. Genome 16(12):942-954(2005)  
Mizutani, Y., et al. FEBS Lett. 563 (1-3), 93-97 (2004) :