

LCN10 Antibody (Center)
Affinity Purified Rabbit Polyclonal Antibody (Pab)
Catalog # AP10587c

Specification

LCN10 Antibody (Center) - Product Information

Application	WB, FC,E
Primary Accession	Q6JVE6
Reactivity	Human, Mouse
Host	Rabbit
Clonality	Polyclonal
Isotype	Rabbit IgG
Calculated MW	20759
Antigen Region	94-123

LCN10 Antibody (Center) - Additional Information

Gene ID 414332

Other Names

Epididymal-specific lipocalin-10, LCN10

Target/Specificity

This LCN10 antibody is generated from rabbits immunized with a KLH conjugated synthetic peptide between 94-123 amino acids from the Central region of human LCN10.

Dilution

WB~~1:1000
FC~~1:10~50

Format

Purified polyclonal antibody supplied in PBS with 0.09% (W/V) sodium azide. This antibody is purified through a protein A column, followed by peptide affinity purification.

Storage

Maintain refrigerated at 2-8°C for up to 2 weeks. For long term storage store at -20°C in small aliquots to prevent freeze-thaw cycles.

Precautions

LCN10 Antibody (Center) is for research use only and not for use in diagnostic or therapeutic procedures.

LCN10 Antibody (Center) - Protein Information

Name LCN10

Function May play a role in male fertility. May act as a retinoid carrier protein within the epididymis.

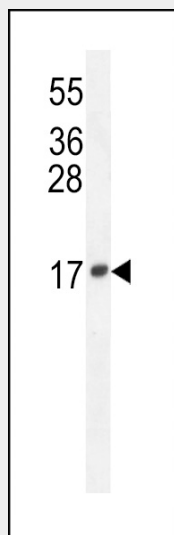
Cellular Location
Secreted.

LCN10 Antibody (Center) - Protocols

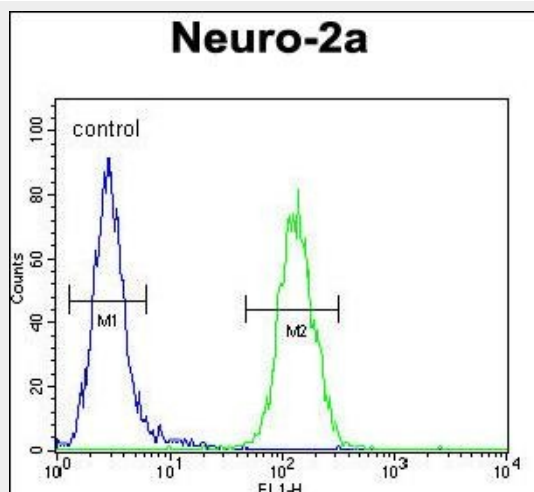
Provided below are standard protocols that you may find useful for product applications.

- [Western Blot](#)
- [Blocking Peptides](#)
- [Dot Blot](#)
- [Immunohistochemistry](#)
- [Immunofluorescence](#)
- [Immunoprecipitation](#)
- [Flow Cytometry](#)
- [Cell Culture](#)

LCN10 Antibody (Center) - Images



LCN10 Antibody (Center) (Cat. #AP10587c) western blot analysis in mouse Neuro-2a cell line lysates (35ug/lane). This demonstrates the LCN10 antibody detected the LCN10 protein (arrow).



LCN10 Antibody (Center) (Cat. #AP10587c) flow cytometric analysis of Neuro-2a cells (right histogram) compared to a negative control cell (left histogram). FITC-conjugated goat-anti-rabbit secondary antibodies were used for the analysis.

LCN10 Antibody (Center) - Background

May play a role in male fertility. May act as a retinoid carrier protein within the epididymis.