

**TEX9 Antibody (N-term)**  
**Affinity Purified Rabbit Polyclonal Antibody (Pab)**  
**Catalog # AP10612a****Specification**

---

**TEX9 Antibody (N-term) - Product Information**

|                   |                             |
|-------------------|-----------------------------|
| Application       | WB, IHC-P, FC,E             |
| Primary Accession | <a href="#">Q8N6V9</a>      |
| Other Accession   | <a href="#">NP_940926.1</a> |
| Reactivity        | Human                       |
| Host              | Rabbit                      |
| Clonality         | Polyclonal                  |
| Isotype           | Rabbit IgG                  |
| Calculated MW     | 44826                       |
| Antigen Region    | 42-70                       |

**TEX9 Antibody (N-term) - Additional Information****Gene ID** 374618**Other Names**

Testis-expressed sequence 9 protein, TEX9

**Target/Specificity**

This TEX9 antibody is generated from rabbits immunized with a KLH conjugated synthetic peptide between 42-70 amino acids from the N-terminal region of human TEX9.

**Dilution**

WB~~1:1000  
IHC-P~~1:50~100  
FC~~1:10~50

**Format**

Purified polyclonal antibody supplied in PBS with 0.09% (W/V) sodium azide. This antibody is purified through a protein A column, followed by peptide affinity purification.

**Storage**

Maintain refrigerated at 2-8°C for up to 2 weeks. For long term storage store at -20°C in small aliquots to prevent freeze-thaw cycles.

**Precautions**

TEX9 Antibody (N-term) is for research use only and not for use in diagnostic or therapeutic procedures.

**TEX9 Antibody (N-term) - Protein Information****Name** TEX9

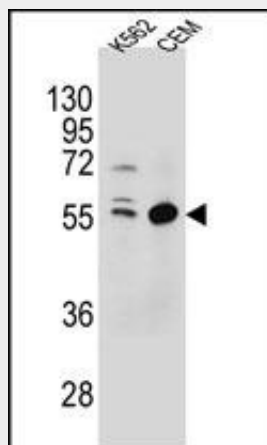
**Cellular Location**

Cytoplasm, cytoskeleton, microtubule organizing center, centrosome, centriolar satellite

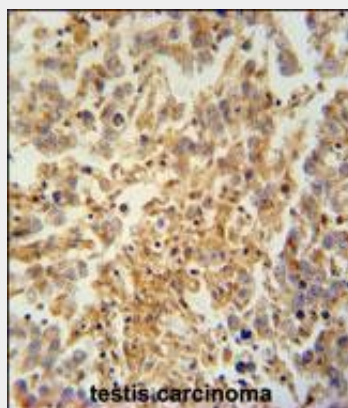
**TEX9 Antibody (N-term) - Protocols**

Provided below are standard protocols that you may find useful for product applications.

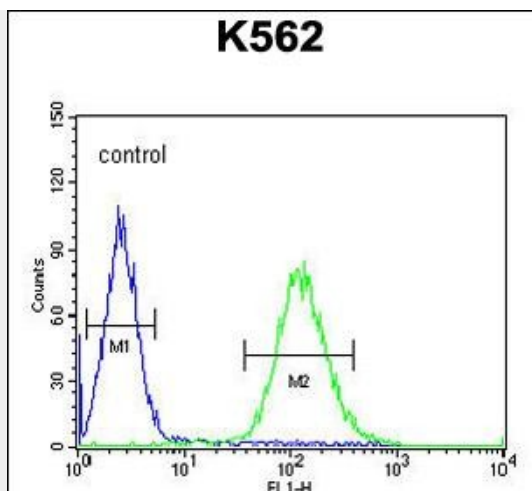
- [Western Blot](#)
- [Blocking Peptides](#)
- [Dot Blot](#)
- [Immunohistochemistry](#)
- [Immunofluorescence](#)
- [Immunoprecipitation](#)
- [Flow Cytometry](#)
- [Cell Culture](#)

**TEX9 Antibody (N-term) - Images**

TEX9 Antibody (N-term) (Cat. #AP10612a) western blot analysis in K562,CEM cell line lysates (35ug/lane).This demonstrates the TEX9 antibody detected the TEX9 protein (arrow).



TEX9 antibody (N-term) (Cat. #AP10612a) immunohistochemistry analysis in formalin fixed and paraffin embedded human testis carcinoma followed by peroxidase conjugation of the secondary antibody and DAB staining. This data demonstrates the use of the TEX9 antibody (N-term) for immunohistochemistry. Clinical relevance has not been evaluated.



TEX9 Antibody (N-term) (Cat. #AP10612a) flow cytometric analysis of K562 cells (right histogram) compared to a negative control cell (left histogram). FITC-conjugated goat-anti-rabbit secondary antibodies were used for the analysis.

#### **TEX9 Antibody (N-term) - Background**

The specific function of TEX9 remains unknown.

#### **TEX9 Antibody (N-term) - References**

Gerhard, D.S., et al. Genome Res. 14 (10B), 2121-2127 (2004) :