

**SPATC1 Antibody (N-term)**  
**Affinity Purified Rabbit Polyclonal Antibody (Pab)**  
**Catalog # AP10622a****Specification**

---

**SPATC1 Antibody (N-term) - Product Information**

Application	WB, IHC-P,E
Primary Accession	<a href="#">Q76KD6</a>
Other Accession	<a href="#">Q148B6</a> , <a href="#">NP_001127846.1</a> , <a href="#">NP_940974.2</a>
Reactivity	Human, Mouse
Host	Rabbit
Clonality	Polyclonal
Isotype	Rabbit IgG
Antigen Region	1-30

**SPATC1 Antibody (N-term) - Additional Information****Gene ID** 375686**Other Names**

Sperlin, Spermatogenesis and centriole-associated protein 1, Spermatogenesis-associated protein 15, Spermatogenic cell-specific Cdc20-binding protein, SPATC1, SPATA15, SPRN

**Target/Specificity**

This SPATC1 antibody is generated from rabbits immunized with a KLH conjugated synthetic peptide between 1-30 amino acids from the N-terminal region of human SPATC1.

**Dilution**

WB~~1:1000

IHC-P~~1:50~100

**Format**

Purified polyclonal antibody supplied in PBS with 0.09% (W/V) sodium azide. This antibody is purified through a protein A column, followed by peptide affinity purification.

**Storage**

Maintain refrigerated at 2-8°C for up to 2 weeks. For long term storage store at -20°C in small aliquots to prevent freeze-thaw cycles.

**Precautions**

SPATC1 Antibody (N-term) is for research use only and not for use in diagnostic or therapeutic procedures.

**SPATC1 Antibody (N-term) - Protein Information****Name** SPATC1**Synonyms** SPATA15, SPRN

**Cellular Location**

Cytoplasm. Cytoplasm, cytoskeleton, microtubule organizing center, centrosome Note=Colocalizes with the centrosomal pericentrin protein PCNT1 (By similarity). Located in the connecting piece of sperm. {ECO:0000250, ECO:0000269|PubMed:20542897}

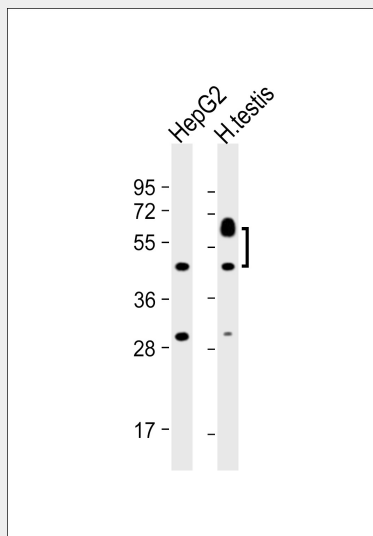
**Tissue Location**

Detected only in testis.

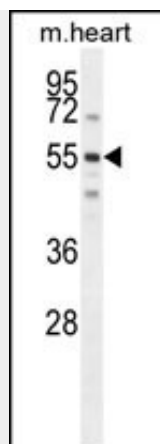
**SPATC1 Antibody (N-term) - Protocols**

Provided below are standard protocols that you may find useful for product applications.

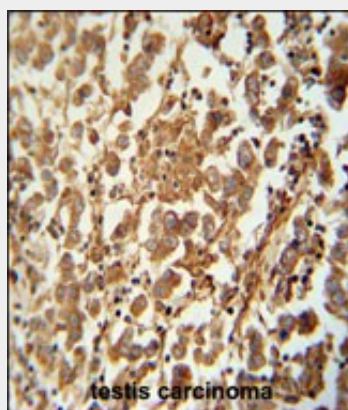
- [Western Blot](#)
- [Blocking Peptides](#)
- [Dot Blot](#)
- [Immunohistochemistry](#)
- [Immunofluorescence](#)
- [Immunoprecipitation](#)
- [Flow Cytometry](#)
- [Cell Culture](#)

**SPATC1 Antibody (N-term) - Images**

All lanes : Anti-SPATC1 Antibody (N-term) at 1:1000 dilution Lane 1: HepG2 whole cell lysate Lane 2: human testis lysate Lysates/proteins at 20 µg per lane. Secondary Goat Anti-Rabbit IgG, (H+L), Peroxidase conjugated at 1/10000 dilution. Predicted band size : 62kDa Blocking/Dilution buffer: 5% NFDM/TBST.



SPATC1 Antibody (N-term) (Cat. #AP10622a) western blot analysis in mouse heart tissue lysates (35ug/lane). This demonstrates the SPATC1 antibody detected the SPATC1 protein (arrow).



SPATC1 antibody (N-term) (Cat. #AP10622a) immunohistochemistry analysis in formalin fixed and paraffin embedded human testis carcinoma followed by peroxidase conjugation of the secondary antibody and DAB staining. This data demonstrates the use of the SPATC1 antibody (N-term) for immunohistochemistry. Clinical relevance has not been evaluated.

#### **SPATC1 Antibody (N-term) - References**

Goto, M., et al. Hum. Reprod. 25(8):1884-1894(2010)  
Goto, M., et al. J. Biol. Chem. 279(40):42128-42138(2004)

#### **SPATC1 Antibody (N-term) - Citations**

- [Alteration of sperm protein profile induced by cigarette smoking.](#)