

WDR76 Antibody (C-term)
Affinity Purified Rabbit Polyclonal Antibody (Pab)
Catalog # AP10651b**Specification**

WDR76 Antibody (C-term) - Product Information

| | |
|-------------------|--|
| Application | WB,E |
| Primary Accession | Q9H967 |
| Other Accession | NP_001161413.1 , NP_079184.2 |
| Reactivity | Human, Mouse |
| Host | Rabbit |
| Clonality | Polyclonal |
| Isotype | Rabbit IgG |
| Calculated MW | 69769 |
| Antigen Region | 455-484 |

WDR76 Antibody (C-term) - Additional Information**Gene ID** 79968**Other Names**

WD repeat-containing protein 76, WDR76

Target/Specificity

This WDR76 antibody is generated from rabbits immunized with a KLH conjugated synthetic peptide between 455-484 amino acids from the C-terminal region of human WDR76.

Dilution

WB~~1:1000

Format

Purified polyclonal antibody supplied in PBS with 0.09% (W/V) sodium azide. This antibody is purified through a protein A column, followed by peptide affinity purification.

Storage

Maintain refrigerated at 2-8°C for up to 2 weeks. For long term storage store at -20°C in small aliquots to prevent freeze-thaw cycles.

Precautions

WDR76 Antibody (C-term) is for research use only and not for use in diagnostic or therapeutic procedures.

WDR76 Antibody (C-term) - Protein Information**Name** WDR76

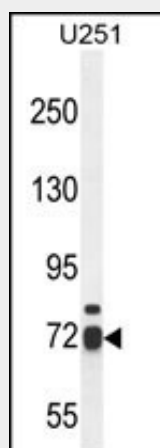
Function Specifically binds 5-hydroxymethylcytosine (5hmC), suggesting that it acts as a specific reader of 5hmC.

WDR76 Antibody (C-term) - Protocols

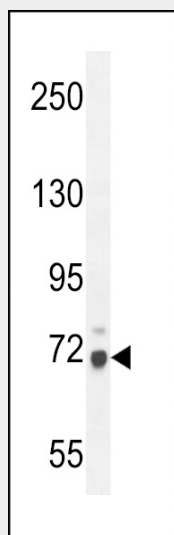
Provided below are standard protocols that you may find useful for product applications.

- [Western Blot](#)
- [Blocking Peptides](#)
- [Dot Blot](#)
- [Immunohistochemistry](#)
- [Immunofluorescence](#)
- [Immunoprecipitation](#)
- [Flow Cytometry](#)
- [Cell Culture](#)

WDR76 Antibody (C-term) - Images



WDR76 Antibody (C-term) (Cat. #AP10651b) western blot analysis in U251 cell line lysates (35ug/lane). This demonstrates the WDR76 antibody detected the WDR76 protein (arrow).



WDR76 Antibody (C-term) (Cat. #AP10651b) western blot analysis in mouse NIH-3T3 cell line lysates (35ug/lane). This demonstrates the WDR76 antibody detected the WDR76 protein (arrow).