

**CPLX3 Antibody (Center)**  
**Affinity Purified Rabbit Polyclonal Antibody (Pab)**  
**Catalog # AP10652c****Specification**

---

**CPLX3 Antibody (Center) - Product Information**

Application	WB, IHC-P,E
Primary Accession	<a href="#">Q8WVH0</a>
Other Accession	<a href="#">Q8R1B5</a> , <a href="#">Q0IIE0</a> , <a href="#">NP_001025176.1</a>
Reactivity	Human
Predicted	Bovine, Mouse
Host	Rabbit
Clonality	Polyclonal
Isotype	Rabbit IgG
Calculated MW	17557
Antigen Region	52-81

**CPLX3 Antibody (Center) - Additional Information****Gene ID** 594855**Other Names**

Complexin-3, Complexin III, CPX III, CPLX3

**Target/Specificity**

This CPLX3 antibody is generated from rabbits immunized with a KLH conjugated synthetic peptide between 52-81 amino acids from the Central region of human CPLX3.

**Dilution**

WB~~1:1000

IHC-P~~1:50~100

**Format**

Purified polyclonal antibody supplied in PBS with 0.09% (W/V) sodium azide. This antibody is purified through a protein A column, followed by peptide affinity purification.

**Storage**

Maintain refrigerated at 2-8°C for up to 2 weeks. For long term storage store at -20°C in small aliquots to prevent freeze-thaw cycles.

**Precautions**

CPLX3 Antibody (Center) is for research use only and not for use in diagnostic or therapeutic procedures.

**CPLX3 Antibody (Center) - Protein Information****Name** CPLX3

**Function** Complexin that regulates SNARE protein complex-mediated synaptic vesicle fusion (By similarity). Required for the maintenance of synaptic ultrastructure in the adult retina (By similarity). Positively regulates synaptic transmission through synaptic vesicle availability and exocytosis of neurotransmitters at photoreceptor ribbon synapses in the retina (By similarity). Suppresses tonic photoreceptor activity and baseline 'noise' by suppression of  $\text{Ca}^{2+}$  vesicle tonic release and the facilitation of evoked synchronous and asynchronous  $\text{Ca}^{2+}$  vesicle release (By similarity).

#### Cellular Location

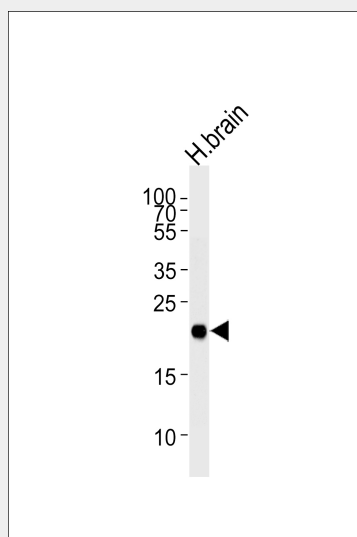
Synapse {ECO:0000250|UniProtKB:Q8R1B5}. Cell membrane; Lipid-anchor {ECO:0000250|UniProtKB:Q8R1B5}. Note=Enriched at the synaptic terminal (By similarity). Localized at glycinergic synaptic contacts of All amacrine cells with OFF cone bipolar cells in the OFF sublamina of the retina inner nuclear layer (By similarity) {ECO:0000250|UniProtKB:Q8R1B5}

### CPLX3 Antibody (Center) - Protocols

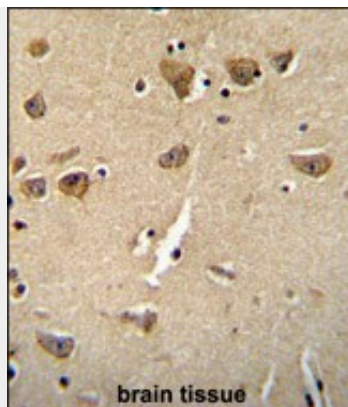
Provided below are standard protocols that you may find useful for product applications.

- [Western Blot](#)
- [Blocking Peptides](#)
- [Dot Blot](#)
- [Immunohistochemistry](#)
- [Immunofluorescence](#)
- [Immunoprecipitation](#)
- [Flow Cytometry](#)
- [Cell Culture](#)

### CPLX3 Antibody (Center) - Images



Western blot analysis of lysate from human brain tissue lysate, using CPLX3 Antibody (Center)(Cat. #AP10652c). AP10652c was diluted at 1:1000 at each lane. A goat anti-rabbit IgG H&L(HRP) at 1:5000 dilution was used as the secondary antibody. Lysate at 35ug per lane.



CPLX3 Antibody (Center) (Cat. #AP10652c) immunohistochemistry analysis in formalin fixed and paraffin embedded human brain tissue followed by peroxidase conjugation of the secondary antibody and DAB staining. This data demonstrates the use of the CPLX3 Antibody (Center) for immunohistochemistry. Clinical relevance has not been evaluated.

#### **CPLX3 Antibody (Center) - Background**

Positively regulates a late step in synaptic vesicle exocytosis (By similarity).

#### **CPLX3 Antibody (Center) - References**

Newton-Cheh, C., et al. Nat. Genet. (2009) In press :  
Levy, D., et al. Nat. Genet. (2009) In press :  
Reim, K., et al. J. Cell Biol. 169(4):669-680(2005)  
Ohira, M., et al. Oncogene 22(35):5525-5536(2003)