

**CHRD1 Antibody (N-term)**  
**Affinity Purified Rabbit Polyclonal Antibody (Pab)**  
**Catalog # AP10667a****Specification**

---

**CHRD1 Antibody (N-term) - Product Information**

Application	WB, IHC-P,E
Primary Accession	<a href="#">O9BU40</a>
Other Accession	<a href="#">NP_660277</a>
Reactivity	Human
Host	Rabbit
Clonality	Polyclonal
Isotype	Rabbit IgG
Calculated MW	52026
Antigen Region	2-30

**CHRD1 Antibody (N-term) - Additional Information****Gene ID** 91851**Other Names**

Chordin-like protein 1, Neuralin-1, Neurogenesin-1, Ventroptin, CHRD1, NRLN1

**Target/Specificity**

This CHRD1 antibody is generated from rabbits immunized with a KLH conjugated synthetic peptide between 2-30 amino acids from the N-terminal region of human CHRD1.

**Dilution**

WB~~1:1000

IHC-P~~1:50~100

**Format**

Purified polyclonal antibody supplied in PBS with 0.09% (W/V) sodium azide. This antibody is purified through a protein A column, followed by peptide affinity purification.

**Storage**

Maintain refrigerated at 2-8°C for up to 2 weeks. For long term storage store at -20°C in small aliquots to prevent freeze-thaw cycles.

**Precautions**

CHRD1 Antibody (N-term) is for research use only and not for use in diagnostic or therapeutic procedures.

**CHRD1 Antibody (N-term) - Protein Information****Name** CHRD1**Synonyms** NRLN1

**Function** Antagonizes the function of BMP4 by binding to it and preventing its interaction with receptors. Alters the fate commitment of neural stem cells from gliogenesis to neurogenesis. Contributes to neuronal differentiation of neural stem cells in the brain by preventing the adoption of a glial fate. May play a crucial role in dorsoventral axis formation. May play a role in embryonic bone formation (By similarity). May also play an important role in regulating retinal angiogenesis through modulation of BMP4 actions in endothelial cells. Plays a role during anterior segment eye development.

#### **Cellular Location**

Secreted.

#### **Tissue Location**

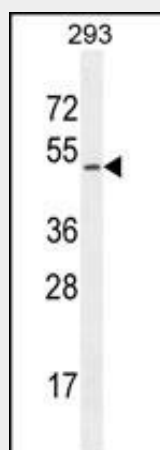
Expressed in the developing cornea and in the eye anterior segment in addition to the retina. Differentially expressed in the fetal brain. There is high expression in cerebellum and neocortex. Expressed in retinal pericytes.

### **CHRD1 Antibody (N-term) - Protocols**

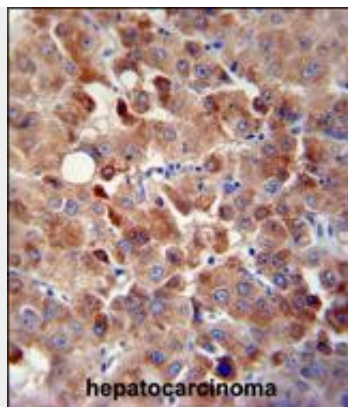
Provided below are standard protocols that you may find useful for product applications.

- [Western Blot](#)
- [Blocking Peptides](#)
- [Dot Blot](#)
- [Immunohistochemistry](#)
- [Immunofluorescence](#)
- [Immunoprecipitation](#)
- [Flow Cytometry](#)
- [Cell Culture](#)

### **CHRD1 Antibody (N-term) - Images**



CHRD1 Antibody (N-term) (Cat. #AP10667a) western blot analysis in 293 cell line lysates (35ug/lane). This demonstrates the CHRD1 antibody detected the CHRD1 protein (arrow).



CHRDL1 antibody (N-term) (Cat. #AP10667a) immunohistochemistry analysis in formalin fixed and paraffin embedded human hepatocarcinoma followed by peroxidase conjugation of the secondary antibody and DAB staining. This data demonstrates the use of the CHRDL1 antibody (N-term) for immunohistochemistry. Clinical relevance has not been evaluated.

#### **CHRDL1 Antibody (N-term) - Background**

CHRDL1 is an antagonist of bone morphogenetic protein 4. The encoded protein may play a role in topographic retinotectal projection and in the regulation of retinal angiogenesis in response to hypoxia. Alternatively spliced transcript variants encoding different isoforms have been described.

#### **CHRDL1 Antibody (N-term) - References**

Fernandes, H., et al. Cells Tissues Organs (Print) 191(6):443-452(2010)  
Larman, B.W., et al. J. Am. Soc. Nephrol. 20(5):1020-1031(2009)  
Kane, R., et al. Mol. Vis. 14, 1138-1148 (2008) :  
Kosinski, C., et al. Proc. Natl. Acad. Sci. U.S.A. 104(39):15418-15423(2007)  
Gazzerro, E., et al. Rev Endocr Metab Disord 7 (1-2), 51-65 (2006) :