

**NPSR1 Antibody (C-term)**  
**Affinity Purified Rabbit Polyclonal Antibody (Pab)**  
**Catalog # AP10683b**

**Specification**

---

**NPSR1 Antibody (C-term) - Product Information**

Application	WB,E
Primary Accession	<a href="#">Q6W5P4</a>
Other Accession	<a href="#">NP_997055.1</a>
Reactivity	Human, Mouse
Host	Rabbit
Clonality	Polyclonal
Isotype	Rabbit IgG
Calculated MW	42687
Antigen Region	327-356

**NPSR1 Antibody (C-term) - Additional Information**

**Gene ID** 387129

**Other Names**

Neuropeptide S receptor, G-protein coupled receptor 154, G-protein coupled receptor PGR14, G-protein coupled receptor for asthma susceptibility, NPSR1, GPR154, GPRA, PGR14

**Target/Specificity**

This NPSR1 antibody is generated from rabbits immunized with a KLH conjugated synthetic peptide between 327-356 amino acids from the C-terminal region of human NPSR1.

**Dilution**

WB~~1:1000

**Format**

Purified polyclonal antibody supplied in PBS with 0.09% (W/V) sodium azide. This antibody is purified through a protein A column, followed by peptide affinity purification.

**Storage**

Maintain refrigerated at 2-8°C for up to 2 weeks. For long term storage store at -20°C in small aliquots to prevent freeze-thaw cycles.

**Precautions**

NPSR1 Antibody (C-term) is for research use only and not for use in diagnostic or therapeutic procedures.

**NPSR1 Antibody (C-term) - Protein Information**

**Name** NPSR1

**Synonyms** GPR154, GPRA, PGR14

**Function** G-protein coupled receptor for neuropeptide S (NPS) (PubMed:[16790440](#)). Promotes mobilization of intracellular  $\text{Ca}^{2+}$  stores (PubMed:[16790440](#)). Inhibits cell growth in response to NPS binding (PubMed:[15947423](#)). Involved in pathogenesis of asthma and other IgE-mediated diseases.

#### Cellular Location

[Isoform 1]: Cell membrane; Multi-pass membrane protein [Isoform 4]: Cell membrane; Multi-pass membrane protein [Isoform 5]: Cytoplasm [Isoform 7]: Cytoplasm

#### Tissue Location

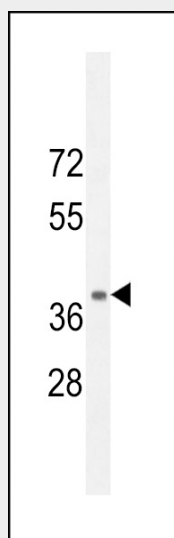
Isoform 4 is ubiquitous; it is detected in glandular epithelia of bronchus, stomach, small intestine, colon, uterus, esophagus, spleen, kidney, pancreas, prostate and breast. Isoform 1 is detected in uterus, colon and prostate, and in the smooth muscle cell layer in bronchial and arterial walls (at protein level) (PubMed:[15947423](#)). Isoform 1 is predominantly expressed in smooth muscle. Isoform 4 is predominantly expressed in epithelial cells. In bronchial biopsies, it is expressed in smooth muscle cells of asthma patients, but not in control patients; whereas in epithelial cells, its expression is consistently stronger in asthma patients.

#### NPSR1 Antibody (C-term) - Protocols

Provided below are standard protocols that you may find useful for product applications.

- [Western Blot](#)
- [Blocking Peptides](#)
- [Dot Blot](#)
- [Immunohistochemistry](#)
- [Immunofluorescence](#)
- [Immunoprecipitation](#)
- [Flow Cytometry](#)
- [Cell Culture](#)

#### NPSR1 Antibody (C-term) - Images



NPSR1 Antibody (C-term) (Cat. #AP10683b) western blot analysis in mouse kidney tissue lysates (35ug/lane). This demonstrates the NPSR1 antibody detected the NPSR1 protein (arrow).

#### NPSR1 Antibody (C-term) - Background

NPSR1 is a member of the G protein-coupled receptor 1 family and encodes a plasma membrane protein. Increased expression of this gene in ciliated cells of the respiratory epithelium and in bronchial smooth muscle cells is associated with asthma.

#### **NPSR1 Antibody (C-term) - References**

Raczka, K.A., et al. Mol. Psychiatry 15 (11), 1045 (2010) :  
Bailey, S.D., et al. Diabetes Care 33(10):2250-2253(2010)  
Donner, J., et al. Biol. Psychiatry 68(5):474-483(2010)  
Domschke, K., et al. Mol. Psychiatry (2010) In press :  
Schuurhof, A., et al. Pediatr. Pulmonol. 45(6):608-613(2010)