

**CD37 Antibody (Center)**  
**Affinity Purified Rabbit Polyclonal Antibody (Pab)**  
**Catalog # AP10711c****Specification**

---

**CD37 Antibody (Center) - Product Information**

Application	WB, FC,E
Primary Accession	<a href="#">P11049</a>
Other Accession	<a href="#">NP_001765.1</a>
Reactivity	Human
Host	Rabbit
Clonality	Polyclonal
Isotype	Rabbit IgG
Calculated MW	31703
Antigen Region	101-130

**CD37 Antibody (Center) - Additional Information****Gene ID** 951**Other Names**

Leukocyte antigen CD37, Tetraspanin-26, Tspan-26, CD37, CD37, TSPAN26

**Target/Specificity**

This CD37 antibody is generated from rabbits immunized with a KLH conjugated synthetic peptide between 101-130 amino acids from the Central region of human CD37.

**Dilution**

WB~~1:1000

FC~~1:10~50

**Format**

Purified polyclonal antibody supplied in PBS with 0.09% (W/V) sodium azide. This antibody is purified through a protein A column, followed by peptide affinity purification.

**Storage**

Maintain refrigerated at 2-8°C for up to 2 weeks. For long term storage store at -20°C in small aliquots to prevent freeze-thaw cycles.

**Precautions**

CD37 Antibody (Center) is for research use only and not for use in diagnostic or therapeutic procedures.

**CD37 Antibody (Center) - Protein Information****Name** CD37**Synonyms** TSPAN26

**Cellular Location**

Membrane; Multi-pass membrane protein.

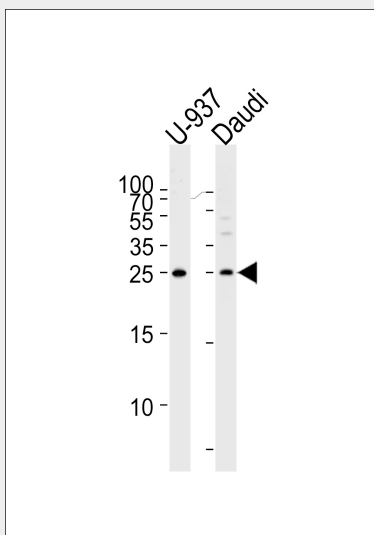
**Tissue Location**

B-lymphocytes.

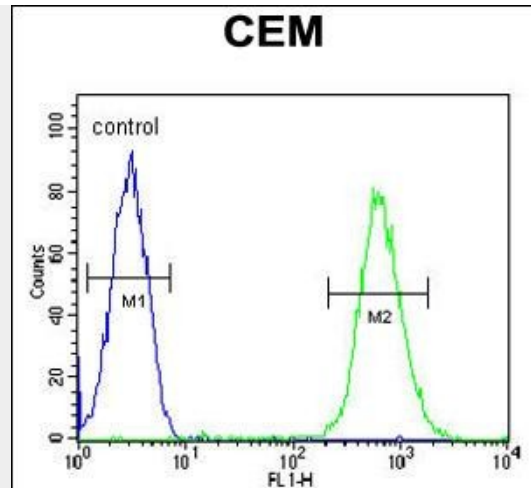
**CD37 Antibody (Center) - Protocols**

Provided below are standard protocols that you may find useful for product applications.

- [Western Blot](#)
- [Blocking Peptides](#)
- [Dot Blot](#)
- [Immunohistochemistry](#)
- [Immunofluorescence](#)
- [Immunoprecipitation](#)
- [Flow Cytometry](#)
- [Cell Culture](#)

**CD37 Antibody (Center) - Images**

Western blot analysis of lysates from U-937, Daudi cell line (from left to right), using CD37 Antibody (Center)(Cat. #AP10711c). AP10711c was diluted at 1:1000 at each lane. A goat anti-rabbit IgG H&L(HRP) at 1:5000 dilution was used as the secondary antibody. Lysates at 35ug per lane.



CD37 Antibody (Center) (Cat. #AP10711c) flow cytometric analysis of CEM cells (right histogram) compared to a negative control cell (left histogram). FITC-conjugated goat-anti-rabbit secondary antibodies were used for the analysis.

### CD37 Antibody (Center) - Background

The protein encoded by this gene is a member of the transmembrane 4 superfamily, also known as the tetraspanin family. Most of these members are cell-surface proteins that are characterized by the presence of four hydrophobic domains. The proteins mediate signal transduction events that play a role in the regulation of cell development, activation, growth and motility. This encoded protein is a cell surface glycoprotein that is known to complex with integrins and other transmembrane 4 superfamily proteins. It may play a role in T-cell-B-cell interactions. Alternate splicing results in multiple transcript variants encoding different isoforms.

### CD37 Antibody (Center) - References

Bailey, S.D., et al. Diabetes Care 33(10):2250-2253(2010)  
Gartlan, K.H., et al. J. Immunol. 185(6):3158-3166(2010)  
Talmud, P.J., et al. Am. J. Hum. Genet. 85(5):628-642(2009)  
Zhao, X., et al. Blood 110(7):2569-2577(2007)  
Meyer-Wentrup, F., et al. J. Immunol. 178(1):154-162(2007)