

**IGSF1 Antibody (C-term)**  
**Affinity Purified Rabbit Polyclonal Antibody (Pab)**  
**Catalog # AP10732b**

**Specification**

---

**IGSF1 Antibody (C-term) - Product Information**

Application	WB, IHC-P,E
Primary Accession	<a href="#">Q8N6C5</a>
Other Accession	<a href="#">Q925N6</a> , <a href="#">Q7TQA1</a> , <a href="#">NP_001164433.1</a>
Reactivity	Human, Mouse
Predicted	Rat
Host	Rabbit
Clonality	Polyclonal
Isotype	Rabbit IgG
Calculated MW	148936
Antigen Region	1270-1297

**IGSF1 Antibody (C-term) - Additional Information**

**Gene ID** 3547

**Other Names**

Immunoglobulin superfamily member 1, IgSF1, Immunoglobulin-like domain-containing protein 1, Inhibin-binding protein, InhBP, Pituitary gland-specific factor 2, p120, IGSF1, IGDC1, KIAA0364, PGSF2

**Target/Specificity**

This IGSF1 antibody is generated from rabbits immunized with a KLH conjugated synthetic peptide between 1270-1297 amino acids from the C-terminal region of human IGSF1.

**Dilution**

WB~~1:1000  
IHC-P~~1:50~100

**Format**

Purified polyclonal antibody supplied in PBS with 0.09% (W/V) sodium azide. This antibody is purified through a protein A column, followed by peptide affinity purification.

**Storage**

Maintain refrigerated at 2-8°C for up to 2 weeks. For long term storage store at -20°C in small aliquots to prevent freeze-thaw cycles.

**Precautions**

IGSF1 Antibody (C-term) is for research use only and not for use in diagnostic or therapeutic procedures.

**IGSF1 Antibody (C-term) - Protein Information**

**Name** IGSF1

**Synonyms** IGDC1, KIAA0364, PGSF2

**Function** Seems to be a coreceptor in inhibin signaling, but seems not to be a high-affinity inhibin receptor. Antagonizes activin A signaling in the presence or absence of inhibin B (By similarity). Necessary to mediate a specific antagonistic effect of inhibin B on activin- stimulated transcription.

**Cellular Location**

[Isoform 1]: Membrane; Multi-pass membrane protein [Isoform 3]: Secreted.

**Tissue Location**

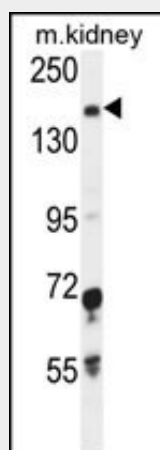
Highly expressed in pancreas, testis and fetal liver. Moderately expressed in heart, prostate and small intestine Expressed at very low levels in brain, thymus, ovary, colon, fetal lung and fetal kidney. Expressed in muscle. Isoform 3 is expressed in pituitary gland.

**IGSF1 Antibody (C-term) - Protocols**

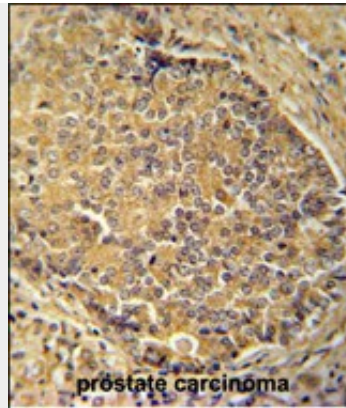
Provided below are standard protocols that you may find useful for product applications.

- [Western Blot](#)
- [Blocking Peptides](#)
- [Dot Blot](#)
- [Immunohistochemistry](#)
- [Immunofluorescence](#)
- [Immunoprecipitation](#)
- [Flow Cytometry](#)
- [Cell Culture](#)

**IGSF1 Antibody (C-term) - Images**



IGSF1 Antibody (C-term) (Cat. #AP10732b) western blot analysis in mouse kidney tissue lysates (35ug/lane). This demonstrates the IGSF1 antibody detected the IGSF1 protein (arrow).



IGSF1 antibody (C-term) (Cat. #AP10732b) immunohistochemistry analysis in formalin fixed and paraffin embedded human prostate carcinoma followed by peroxidase conjugation of the secondary antibody and DAB staining. This data demonstrates the use of the IGSF1 antibody (C-term) for immunohistochemistry. Clinical relevance has not been evaluated.

#### **IGSF1 Antibody (C-term) - Background**

This gene encodes a member of the immunoglobulin-like domain-containing superfamily. Proteins in this superfamily contain varying numbers of immunoglobulin-like domains and are thought to participate in the regulation of interactions between cells. Multiple transcript variants encoding different isoforms have been found for this gene.

#### **IGSF1 Antibody (C-term) - References**

Robakis, T., et al. J. Biol. Chem. 283(52):36369-36376(2008)  
Nakayama, M., et al. Genome Res. 12(11):1773-1784(2002)  
Tanaka, S., et al. J. Mol. Endocrinol. 28(1):33-44(2002)  
Gui, Y., et al. J. Clin. Endocrinol. Metab. 86(5):2104-2110(2001)  
Chapman, S.C., et al. Mol. Endocrinol. 15(4):668-679(2001)