

**SEC13 Antibody (Center)**  
**Affinity Purified Rabbit Polyclonal Antibody (Pab)**  
**Catalog # AP10738c****Specification**

---

**SEC13 Antibody (Center) - Product Information**

Application	WB, FC,E
Primary Accession	<a href="#">P55735</a>
Other Accession	<a href="#">NP_899195.1</a>
Reactivity	Human
Host	Rabbit
Clonality	Polyclonal
Isotype	Rabbit IgG
Calculated MW	35541
Antigen Region	72-100

**SEC13 Antibody (Center) - Additional Information****Gene ID** 6396**Other Names**

Protein SEC13 homolog, SEC13-like protein 1, SEC13-related protein, SEC13, D3S1231E, SEC13L1, SEC13R

**Target/Specificity**

This SEC13 antibody is generated from rabbits immunized with a KLH conjugated synthetic peptide between 72-100 amino acids from the Central region of human SEC13.

**Dilution**WB~~1:1000  
FC~~1:10~50**Format**

Purified polyclonal antibody supplied in PBS with 0.09% (W/V) sodium azide. This antibody is purified through a protein A column, followed by peptide affinity purification.

**Storage**

Maintain refrigerated at 2-8°C for up to 2 weeks. For long term storage store at -20°C in small aliquots to prevent freeze-thaw cycles.

**Precautions**

SEC13 Antibody (Center) is for research use only and not for use in diagnostic or therapeutic procedures.

**SEC13 Antibody (Center) - Protein Information****Name** SEC13

**Function** Functions as a component of the nuclear pore complex (NPC) and the COPII coat (PubMed:[8972206](#)). At the endoplasmic reticulum, SEC13 is involved in the biogenesis of COPII-coated vesicles (PubMed:[8972206](#)). Required for the exit of adipsin (CFD/ADN), an adipocyte-secreted protein from the endoplasmic reticulum (By similarity).

#### Cellular Location

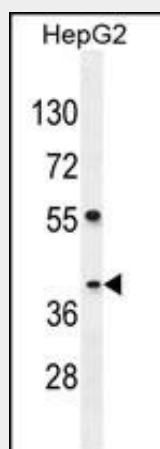
Cytoplasmic vesicle, COPII-coated vesicle membrane; Peripheral membrane protein; Cytoplasmic side. Endoplasmic reticulum membrane; Peripheral membrane protein; Cytoplasmic side. Nucleus, nuclear pore complex. Lysosome membrane. Note=In interphase, localizes at both sides of the NPC.

### SEC13 Antibody (Center) - Protocols

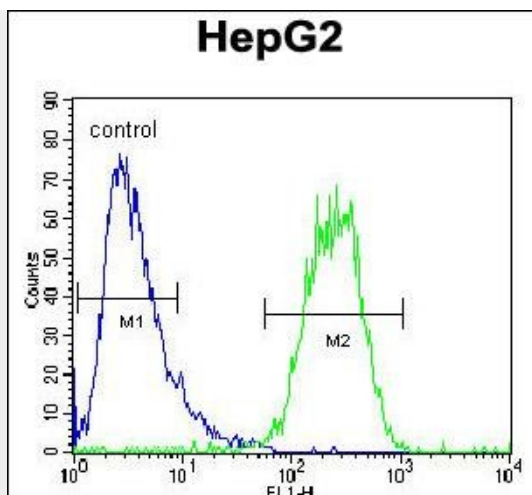
Provided below are standard protocols that you may find useful for product applications.

- [Western Blot](#)
- [Blocking Peptides](#)
- [Dot Blot](#)
- [Immunohistochemistry](#)
- [Immunofluorescence](#)
- [Immunoprecipitation](#)
- [Flow Cytometry](#)
- [Cell Culture](#)

### SEC13 Antibody (Center) - Images



SEC13 Antibody (Center) (Cat. #AP10738c) western blot analysis in HepG2 cell line lysates (35ug/lane). This demonstrates the SEC13 antibody detected the SEC13 protein (arrow).



SEC13 Antibody (Center) (Cat. #AP10738c) flow cytometric analysis of HepG2 cells (right histogram) compared to a negative control cell (left histogram). FITC-conjugated goat-anti-rabbit secondary antibodies were used for the analysis.

### SEC13 Antibody (Center) - Background

The protein encoded by this gene belongs to the SEC13 family of WD-repeat proteins. It is a constituent of the endoplasmic reticulum and the nuclear pore complex. It has similarity to the yeast SEC13 protein, which is required for vesicle biogenesis from endoplasmic reticulum during the transport of proteins. Multiple alternatively spliced transcript variants have been found.

### SEC13 Antibody (Center) - References

Nielsen, A.L. Biochem. Biophys. Res. Commun. 388(3):571-575(2009)  
Townley, A.K., et al. J. Cell. Sci. 121 (PT 18), 3025-3034 (2008) :  
Stagg, S.M., et al. Cell 134(3):474-484(2008)  
Hsia, K.C., et al. Cell 131(7):1313-1326(2007)  
Glavy, J.S., et al. Proc. Natl. Acad. Sci. U.S.A. 104(10):3811-3816(2007)

### SEC13 Antibody (Center) - Citations

- [LMAN1 \(ERGIC-53\) promotes trafficking of neuroreceptors.](#)