

ZC4H2 Antibody (C-term)
Affinity Purified Rabbit Polyclonal Antibody (Pab)
Catalog # AP10760b**Specification**

ZC4H2 Antibody (C-term) - Product Information

Application	WB, IHC-P, FC,E
Primary Accession	O9NQZ6
Other Accession	Q68FG0 , NP_061154.1
Reactivity	Human
Predicted	Mouse
Host	Rabbit
Clonality	Polyclonal
Isotype	Rabbit IgG
Calculated MW	26244
Antigen Region	196-224

ZC4H2 Antibody (C-term) - Additional Information**Gene ID** 55906**Other Names**

Zinc finger C4H2 domain-containing protein, Hepatocellular carcinoma-associated antigen 127, ZC4H2, HCA127, KIAA1166

Target/Specificity

This ZC4H2 antibody is generated from rabbits immunized with a KLH conjugated synthetic peptide between 196-224 amino acids from the C-terminal region of human ZC4H2.

DilutionWB~~1:1000
IHC-P~~1:50~100
FC~~1:10~50**Format**

Purified polyclonal antibody supplied in PBS with 0.09% (W/V) sodium azide. This antibody is purified through a protein A column, followed by peptide affinity purification.

Storage

Maintain refrigerated at 2-8°C for up to 2 weeks. For long term storage store at -20°C in small aliquots to prevent freeze-thaw cycles.

Precautions

ZC4H2 Antibody (C-term) is for research use only and not for use in diagnostic or therapeutic procedures.

ZC4H2 Antibody (C-term) - Protein Information

Name ZC4H2

Synonyms HCA127, KIAA1166

Function Plays a role in interneurons differentiation (PubMed:[26056227](#)). Involved in neuronal development and in neuromuscular junction formation.

Cellular Location

Cytoplasm. Nucleus Postsynaptic cell membrane. Note=Upon transfection into mouse primary hippocampal neurons, localizes at excitatory, but not inhibitory, postsynaptic sites

Tissue Location

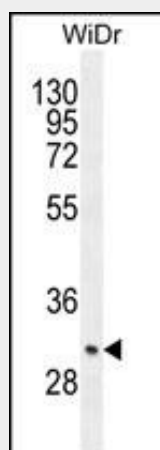
Expressed in fetal tissues, including in brain, intestine, lung, kidney and muscle (PubMed:23623388). Isoform 1 is expressed in numerous fetal brain regions. Isoform 3 is highly expressed in numerous fetal brain regions and spinal cord (PubMed:26056227).

ZC4H2 Antibody (C-term) - Protocols

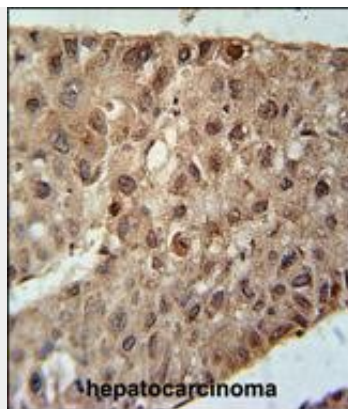
Provided below are standard protocols that you may find useful for product applications.

- [Western Blot](#)
- [Blocking Peptides](#)
- [Dot Blot](#)
- [Immunohistochemistry](#)
- [Immunofluorescence](#)
- [Immunoprecipitation](#)
- [Flow Cytometry](#)
- [Cell Culture](#)

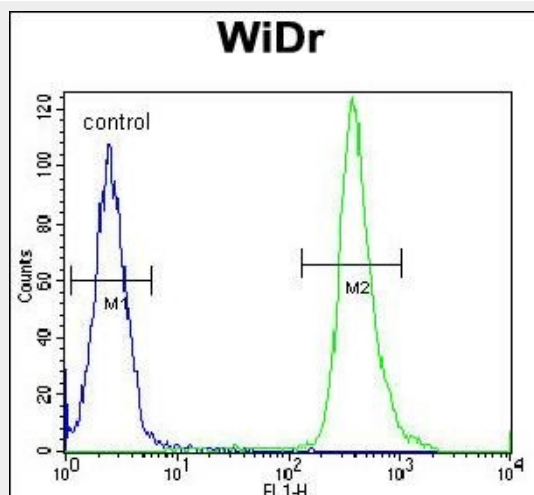
ZC4H2 Antibody (C-term) - Images



ZC4H2 Antibody (C-term) (Cat. #AP10760b) western blot analysis in WiDr cell line lysates (35ug/lane). This demonstrates the ZC4H2 antibody detected the ZC4H2 protein (arrow).



ZC4H2 Antibody (C-term) (Cat. #AP10760b) immunohistochemistry analysis in formalin fixed and paraffin embedded human hepatocarcinoma followed by peroxidase conjugation of the secondary antibody and DAB staining. This data demonstrates the use of the ZC4H2 Antibody (C-term) for immunohistochemistry. Clinical relevance has not been evaluated.



ZC4H2 Antibody (C-term) (Cat. #AP10760b) flow cytometric analysis of WiDr cells (right histogram) compared to a negative control cell (left histogram). FITC-conjugated goat-anti-rabbit secondary antibodies were used for the analysis.

ZC4H2 Antibody (C-term) - Background

This protein contains a C4H2-type zinc finger and is thought to be involved in zinc ion binding. There are 3 isoforms produced by alternative splicing.

ZC4H2 Antibody (C-term) - References

Wu, C., et al. Proteomics 7(11):1775-1785(2007)
Ross, M.T., et al. Nature 434(7031):325-337(2005)
Wang, Y., et al. J. Immunol. 169(2):1102-1109(2002)