

BUD13 Antibody (C-term)
Affinity Purified Rabbit Polyclonal Antibody (Pab)
Catalog # AP10761b**Specification**

BUD13 Antibody (C-term) - Product Information

Application	WB, IHC-P, FC,E
Primary Accession	Q9BRD0
Other Accession	Q4QQU1 , Q8R149 , NP_116114.1
Reactivity	Human, Mouse
Predicted	Rat
Host	Rabbit
Clonality	Polyclonal
Isotype	Rabbit IgG
Calculated MW	70521
Antigen Region	462-490

BUD13 Antibody (C-term) - Additional Information**Gene ID** 84811**Other Names**

BUD13 homolog, BUD13

Target/Specificity

This BUD13 antibody is generated from rabbits immunized with a KLH conjugated synthetic peptide between 462-490 amino acids from the C-terminal region of human BUD13.

Dilution

WB~~1:1000
IHC-P~~1:50~100
FC~~1:10~50

Format

Purified polyclonal antibody supplied in PBS with 0.09% (W/V) sodium azide. This antibody is purified through a protein A column, followed by peptide affinity purification.

Storage

Maintain refrigerated at 2-8°C for up to 2 weeks. For long term storage store at -20°C in small aliquots to prevent freeze-thaw cycles.

Precautions

BUD13 Antibody (C-term) is for research use only and not for use in diagnostic or therapeutic procedures.

BUD13 Antibody (C-term) - Protein Information**Name** BUD13

Function Involved in pre-mRNA splicing as component of the activated spliceosome. As a component of the minor spliceosome, involved in the splicing of U12-type introns in pre-mRNAs (Probable).

Cellular Location

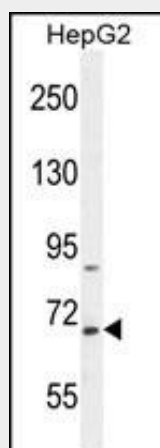
Nucleus

BUD13 Antibody (C-term) - Protocols

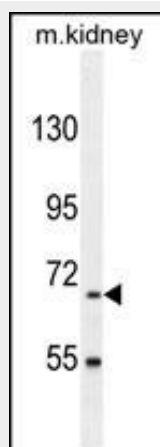
Provided below are standard protocols that you may find useful for product applications.

- [Western Blot](#)
- [Blocking Peptides](#)
- [Dot Blot](#)
- [Immunohistochemistry](#)
- [Immunofluorescence](#)
- [Immunoprecipitation](#)
- [Flow Cytometry](#)
- [Cell Culture](#)

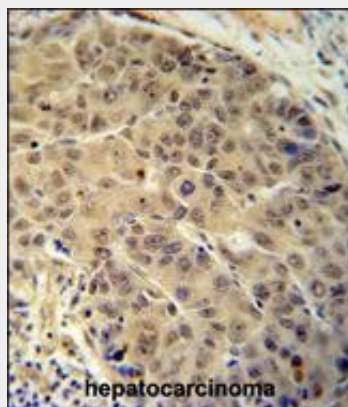
BUD13 Antibody (C-term) - Images



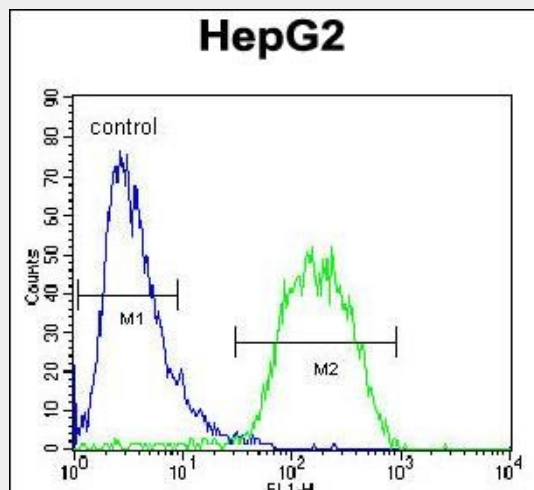
BUD13 Antibody (C-term) (Cat. #AP10761b) western blot analysis in HepG2 cell line lysates (35ug/lane). This demonstrates the BUD13 antibody detected the BUD13 protein (arrow).



BUD13 Antibody (C-term) (Cat. #AP10761b) western blot analysis in mouse kidney tissue lysates (35ug/lane). This demonstrates the BUD13 antibody detected the BUD13 protein (arrow).



BUD13 antibody (C-term) (Cat. #AP10761b) immunohistochemistry analysis in formalin fixed and paraffin embedded human hepatocarcinoma followed by peroxidase conjugation of the secondary antibody and DAB staining. This data demonstrates the use of the BUD13 antibody (C-term) for immunohistochemistry. Clinical relevance has not been evaluated.



BUD13 Antibody (C-term) (Cat. #AP10761b) flow cytometric analysis of HepG2 cells (right histogram) compared to a negative control cell (left histogram). FITC-conjugated goat-anti-rabbit secondary antibodies were used for the analysis.

BUD13 Antibody (C-term) - References

- Stein, J.L., et al. Neuroimage 53(3):1160-1174(2010)
- Fontaine-Bisson, B., et al. Diabetologia 53(10):2155-2162(2010)
- Suchindran, S., et al. PLoS Genet. 6 (4), E1000928 (2010) :
- Hegele, R.A., et al. Hum. Mol. Genet. 18(21):4189-4194(2009)
- Baranzini, S.E., et al. Hum. Mol. Genet. 18(4):767-778(2009)