

**CLPX Antibody (C-term)**  
**Affinity Purified Rabbit Polyclonal Antibody (Pab)**  
**Catalog # AP10767b****Specification**

---

**CLPX Antibody (C-term) - Product Information**

Application	WB, IHC-P, FC,E
Primary Accession	<a href="#">O76031</a>
Other Accession	<a href="#">Q5U2U0</a> , <a href="#">Q9JHS4</a> , <a href="#">NP_006651.2</a>
Reactivity	Human, Mouse
Predicted	Rat
Host	Rabbit
Clonality	Polyclonal
Isotype	Rabbit IgG
Antigen Region	449-477

**CLPX Antibody (C-term) - Additional Information****Gene ID** 10845**Other Names**

ATP-dependent Clp protease ATP-binding subunit clpX-like, mitochondrial, CLPX

**Target/Specificity**

This CLPX antibody is generated from rabbits immunized with a KLH conjugated synthetic peptide between 449-477 amino acids from the C-terminal region of human CLPX.

**Dilution**

WB~~1:1000  
IHC-P~~1:50~100  
FC~~1:10~50

**Format**

Purified polyclonal antibody supplied in PBS with 0.09% (W/V) sodium azide. This antibody is purified through a protein A column, followed by peptide affinity purification.

**Storage**

Maintain refrigerated at 2-8°C for up to 2 weeks. For long term storage store at -20°C in small aliquots to prevent freeze-thaw cycles.

**Precautions**

CLPX Antibody (C-term) is for research use only and not for use in diagnostic or therapeutic procedures.

**CLPX Antibody (C-term) - Protein Information****Name** CLPX

**Function** ATP-dependent specificity component of the Clp protease complex. Hydrolyzes ATP (PubMed:[28874591](#)). Targets specific substrates for degradation by the Clp complex (PubMed:[11923310](#), PubMed:[22710082](#)). Can perform chaperone functions in the absence of CLPP. Enhances the DNA-binding activity of TFAM and is required for maintaining a normal mitochondrial nucleoid structure (PubMed:[22841477](#)). ATP-dependent unfoldase that stimulates the incorporation of the pyridoxal phosphate cofactor into 5-aminolevulinate synthase, thereby activating 5-aminolevulinate (ALA) synthesis, the first step in heme biosynthesis (PubMed:[28874591](#)). Important for efficient erythropoiesis through up-regulation of heme biosynthesis (PubMed:[25957689](#), PubMed:[28874591](#)).

#### Cellular Location

Mitochondrion. Mitochondrion matrix, mitochondrion nucleoid

#### Tissue Location

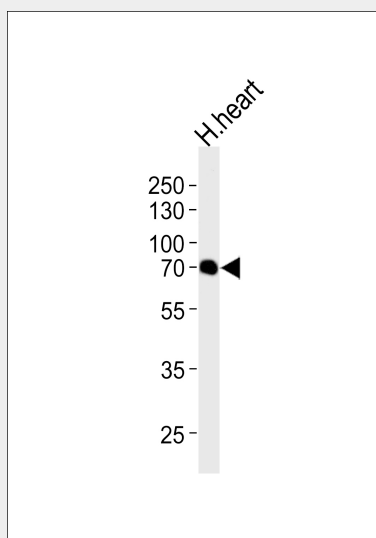
Higher expression in skeletal muscle and heart and to a lesser extent in liver, brain, placenta, lung, kidney and pancreas.

### CLPX Antibody (C-term) - Protocols

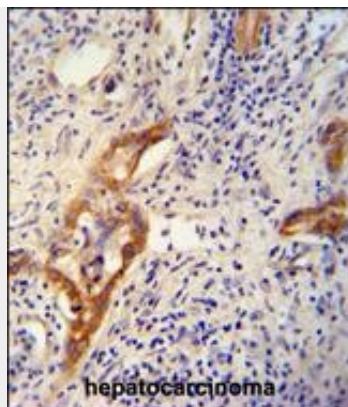
Provided below are standard protocols that you may find useful for product applications.

- [Western Blot](#)
- [Blocking Peptides](#)
- [Dot Blot](#)
- [Immunohistochemistry](#)
- [Immunofluorescence](#)
- [Immunoprecipitation](#)
- [Flow Cytometry](#)
- [Cell Culture](#)

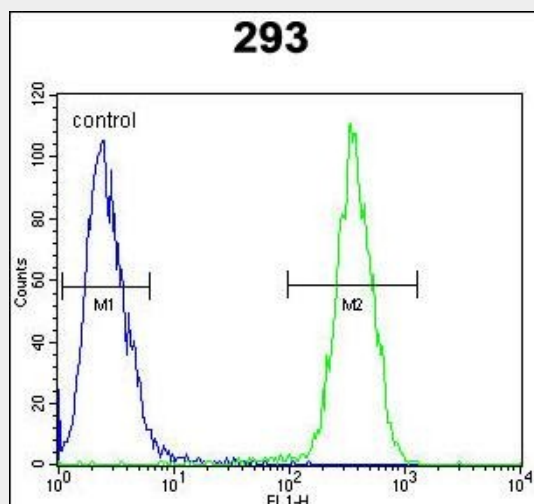
### CLPX Antibody (C-term) - Images



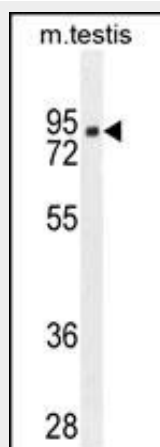
Western blot analysis of lysate from human heart tissue lysate, using CLPX Antibody (C-term)(Cat. #AP10767b). AP10767b was diluted at 1:1000 at each lane. A goat anti-rabbit IgG H&L(HRP) at 1:5000 dilution was used as the secondary antibody. Lysate at 35ug per lane.



CLPX antibody (C-term) (Cat. #AP10767b) immunohistochemistry analysis in formalin fixed and paraffin embedded human hepatocarcinoma followed by peroxidase conjugation of the secondary antibody and DAB staining. This data demonstrates the use of the CLPX antibody (C-term) for immunohistochemistry. Clinical relevance has not been evaluated.



CLPX Antibody (C-term) (Cat. #AP10767b) flow cytometric analysis of 293 cells (right histogram) compared to a negative control cell (left histogram). FITC-conjugated goat-anti-rabbit secondary antibodies were used for the analysis.



CLPX Antibody (C-term) (Cat. #AP10767b) western blot analysis in mouse testis tissue lysates (35ug/lane). This demonstrates the CLPX antibody detected the CLPX protein (arrow).

#### CLPX Antibody (C-term) - Background

ATP-dependent specificity component of the Clp protease. It directs the protease to specific substrates. Can perform chaperone functions in the absence of clpP (By similarity).

#### **CLPX Antibody (C-term) - References**

Martin, A., et al. Mol. Cell 29(4):441-450(2008) Bogenhagen, D.F., et al. J. Biol. Chem. 283(6):3665-3675(2008) Ewing, R.M., et al. Mol. Syst. Biol. 3, 89 (2007) : Kang, S.G., et al. J. Biol. Chem. 280(42):35424-35432(2005) Kang, S.G., et al. J. Biol. Chem. 277(23):21095-21102(2002)

#### **CLPX Antibody (C-term) - Citations**

- [Loss of mitochondrial peptidase Clpp leads to infertility, hearing loss plus growth retardation via accumulation of CLPX, mtDNA and inflammatory factors.](#)