

AT8B2 Antibody (N-term)
Affinity Purified Rabbit Polyclonal Antibody (Pab)
Catalog # AP10779a**Specification**

AT8B2 Antibody (N-term) - Product Information

Application	WB, FC,E
Primary Accession	P98198
Other Accession	P98199 , NP_001005855.1
Reactivity	Human
Predicted	Mouse
Host	Rabbit
Clonality	Polyclonal
Isotype	Rabbit IgG
Calculated MW	137440
Antigen Region	18-47

AT8B2 Antibody (N-term) - Additional Information**Gene ID** 57198**Other Names**

Phospholipid-transporting ATPase ID, ATPase class I type 8B member 2, P4-ATPase flippase complex alpha subunit ATP8B2, ATP8B2, ATPID, KIAA1137

Target/Specificity

This AT8B2 antibody is generated from rabbits immunized with a KLH conjugated synthetic peptide between 18-47 amino acids from the N-terminal region of human AT8B2.

Dilution

WB~~1:1000
FC~~1:10~50

Format

Purified polyclonal antibody supplied in PBS with 0.09% (W/V) sodium azide. This antibody is purified through a protein A column, followed by peptide affinity purification.

Storage

Maintain refrigerated at 2-8°C for up to 2 weeks. For long term storage store at -20°C in small aliquots to prevent freeze-thaw cycles.

Precautions

AT8B2 Antibody (N-term) is for research use only and not for use in diagnostic or therapeutic procedures.

AT8B2 Antibody (N-term) - Protein Information**Name** ATP8B2 {ECO:0000303|PubMed:12880872}

Synonyms ATPID, KIAA1137

Function Catalytic component of P4-ATPase flippase complex, which catalyzes the hydrolysis of ATP coupled to the transport of phosphatidylcholine (PC) from the outer to the inner leaflet of the plasma membrane. May contribute to the maintenance of membrane lipid asymmetry.

Cellular Location

Cell membrane; Multi-pass membrane protein. Endoplasmic reticulum membrane; Multi-pass membrane protein. Note=Efficient exit from the endoplasmic reticulum requires the presence of TMEM30A or TMEM30B

Tissue Location

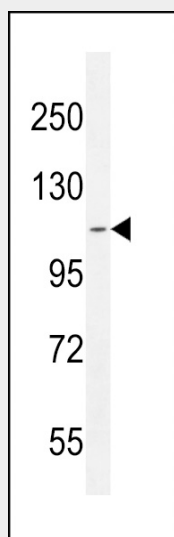
Isoform 3 is ubiquitous, with highest expression in aorta, cerebellum and uterus.

AT8B2 Antibody (N-term) - Protocols

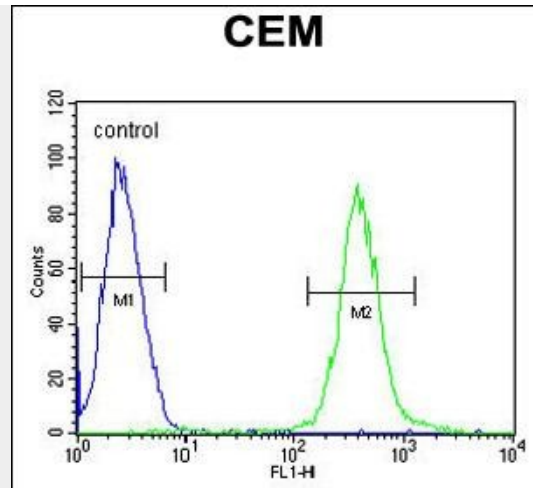
Provided below are standard protocols that you may find useful for product applications.

- [Western Blot](#)
- [Blocking Peptides](#)
- [Dot Blot](#)
- [Immunohistochemistry](#)
- [Immunofluorescence](#)
- [Immunoprecipitation](#)
- [Flow Cytometry](#)
- [Cell Culture](#)

AT8B2 Antibody (N-term) - Images



AT8B2 Antibody (N-term) (Cat. #AP10779a) western blot analysis in CEM cell line lysates (35ug/lane). This demonstrates the AT8B2 antibody detected the AT8B2 protein (arrow).



AT8B2 Antibody (N-term) (Cat. #AP10779a) flow cytometric analysis of CEM cells (right histogram) compared to a negative control cell (left histogram). FITC-conjugated goat-anti-rabbit secondary antibodies were used for the analysis.

AT8B2 Antibody (N-term) - Background

The protein encoded by this gene belongs to the family of P-type cation transport ATPases, and to the subfamily of aminophospholipid-transporting ATPases. The aminophospholipid translocases transport phosphatidylserine and phosphatidylethanolamine from one side of a bilayer to another. Alternatively spliced transcript variants encoding different isoforms have been identified.

AT8B2 Antibody (N-term) - References

Bailey, S.D., et al. Diabetes Care 33(10):2250-2253(2010)
Talmud, P.J., et al. Am. J. Hum. Genet. 85(5):628-642(2009)
Harris, M.J., et al. Biochim. Biophys. Acta 1633(2):127-131(2003)
Halleck, M.S., et al. Physiol. Genomics 1(3):139-150(1999)