

**MTX2 Antibody (C-term)**  
**Affinity Purified Rabbit Polyclonal Antibody (Pab)**  
**Catalog # AP10797b****Specification**

---

**MTX2 Antibody (C-term) - Product Information**

Application	WB, IHC-P, FC,E
Primary Accession	<a href="#">O75431</a>
Other Accession	<a href="#">NP_006545.1</a>
Reactivity	Human
Host	Rabbit
Clonality	Polyclonal
Isotype	Rabbit IgG
Calculated MW	29763
Antigen Region	232-261

**MTX2 Antibody (C-term) - Additional Information****Gene ID** 10651**Other Names**

Metaxin-2, Mitochondrial outer membrane import complex protein 2, MTX2

**Target/Specificity**

This MTX2 antibody is generated from rabbits immunized with a KLH conjugated synthetic peptide between 232-261 amino acids from the C-terminal region of human MTX2.

**Dilution**

WB~~1:1000  
IHC-P~~1:50~100  
FC~~1:10~50

**Format**

Purified polyclonal antibody supplied in PBS with 0.09% (W/V) sodium azide. This antibody is purified through a protein A column, followed by peptide affinity purification.

**Storage**

Maintain refrigerated at 2-8°C for up to 2 weeks. For long term storage store at -20°C in small aliquots to prevent freeze-thaw cycles.

**Precautions**

MTX2 Antibody (C-term) is for research use only and not for use in diagnostic or therapeutic procedures.

**MTX2 Antibody (C-term) - Protein Information****Name** MTX2

**Function** Involved in transport of proteins into the mitochondrion.

**Cellular Location**

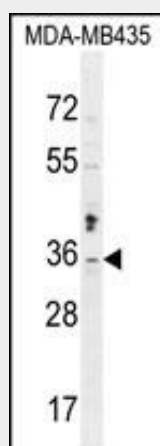
Mitochondrion outer membrane. Mitochondrion

**MTX2 Antibody (C-term) - Protocols**

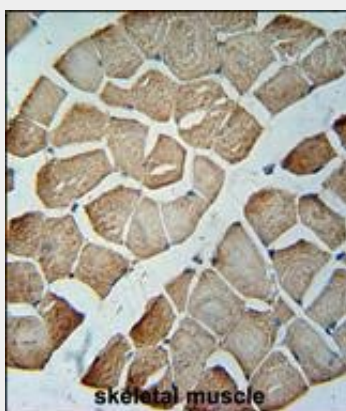
Provided below are standard protocols that you may find useful for product applications.

- [Western Blot](#)
- [Blocking Peptides](#)
- [Dot Blot](#)
- [Immunohistochemistry](#)
- [Immunofluorescence](#)
- [Immunoprecipitation](#)
- [Flow Cytometry](#)
- [Cell Culture](#)

**MTX2 Antibody (C-term) - Images**

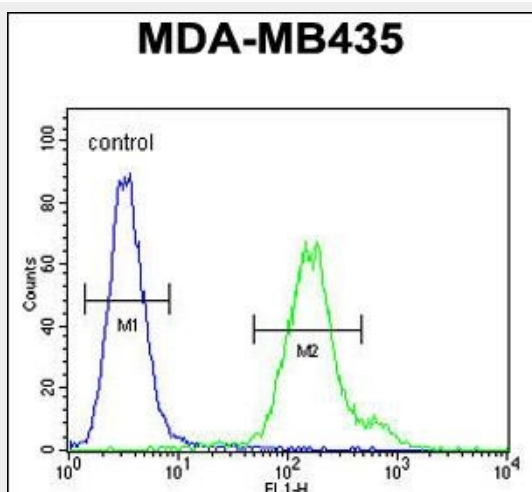


MTX2 Antibody (C-term) (Cat. #AP10797b) western blot analysis in MDA-MB435 cell line lysates (35ug/lane). This demonstrates the MTX2 antibody detected the MTX2 protein (arrow).



MTX2 Antibody (C-term) (Cat. #AP10797b) immunohistochemistry analysis in formalin fixed and paraffin embedded human skeletal muscle followed by peroxidase conjugation of the secondary antibody and DAB staining. This data demonstrates the use of the MTX2 Antibody (C-term) for

immunohistochemistry. Clinical relevance has not been evaluated.



MTX2 Antibody (C-term) (Cat. #AP10797b) flow cytometric analysis of MDA-MB435 cells (right histogram) compared to a negative control cell (left histogram). FITC-conjugated goat-anti-rabbit secondary antibodies were used for the analysis.

#### **MTX2 Antibody (C-term) - Background**

The protein encoded by this gene is highly similar to the metaxin 2 protein from mouse, which has been shown to interact with the mitochondrial membrane protein metaxin 1. Because of this similarity, it is thought that the encoded protein is peripherally associated with the cytosolic face of the outer mitochondrial membrane, and that it is involved in the import of proteins into the mitochondrion. Alternative splicing results in multiple transcript variants. A related pseudogene has been identified on chromosome 7.

#### **MTX2 Antibody (C-term) - References**

Rose, J.E., et al. Mol. Med. 16 (7-8), 247-253 (2010) :  
Xie, J., et al. FEBS Lett. 581(18):3545-3549(2007)  
Kozjak-Pavlovic, V., et al. EMBO Rep. 8(6):576-582(2007)  
Lamesch, P., et al. Genomics 89(3):307-315(2007)  
Armstrong, L.C., et al. J. Cell. Biochem. 74(1):11-22(1999)