

**SRAC1 Antibody (C-term)**  
**Affinity Purified Rabbit Polyclonal Antibody (Pab)**  
**Catalog # AP10801b****Specification**

---

**SRAC1 Antibody (C-term) - Product Information**

Application	WB, IHC-P,E
Primary Accession	<a href="#">O96JX3</a>
Other Accession	<a href="#">Q3U213</a> , <a href="#">Q2TBM9</a> , <a href="#">NP_116250.2</a>
Reactivity	Human, Mouse
Predicted	Bovine
Host	Rabbit
Clonality	Polyclonal
Isotype	Rabbit IgG
Calculated MW	74147
Antigen Region	552-581

**SRAC1 Antibody (C-term) - Additional Information****Gene ID** 84947**Other Names**

Protein SERAC1, Serine active site-containing protein 1, SERAC1

**Target/Specificity**

This SRAC1 antibody is generated from rabbits immunized with a KLH conjugated synthetic peptide between 552-581 amino acids from the C-terminal region of human SRAC1.

**Dilution**

WB~~1:1000

IHC-P~~1:50~100

**Format**

Purified polyclonal antibody supplied in PBS with 0.09% (W/V) sodium azide. This antibody is purified through a protein A column, followed by peptide affinity purification.

**Storage**

Maintain refrigerated at 2-8°C for up to 2 weeks. For long term storage store at -20°C in small aliquots to prevent freeze-thaw cycles.

**Precautions**

SRAC1 Antibody (C-term) is for research use only and not for use in diagnostic or therapeutic procedures.

**SRAC1 Antibody (C-term) - Protein Information****Name** SERAC1

**Function** Plays an important role in the phosphatidylglycerol remodeling that is essential for both mitochondrial function and intracellular cholesterol trafficking. May catalyze the remodeling of phosphatidylglycerol and be involved in the transacylation-acylation reaction to produce phosphatidylglycerol-36:1. May be involved in bis(monoacylglycerol)phosphate biosynthetic pathway.

**Cellular Location**

Membrane; Single-pass membrane protein. Endoplasmic reticulum. Mitochondrion. Note=Localizes at the endoplasmic reticulum and at the endoplasmic reticulum-mitochondria interface

**Tissue Location**

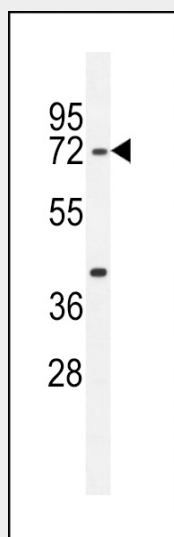
Widely expressed, with predominant expression in fetal skeletal muscle and adult brain. In the brain, highest levels are found in the frontal and occipital cortices, cerebellum and hippocampus.

**SRAC1 Antibody (C-term) - Protocols**

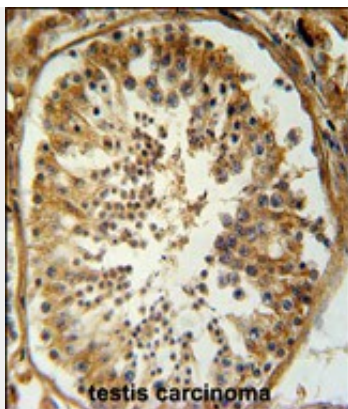
Provided below are standard protocols that you may find useful for product applications.

- [Western Blot](#)
- [Blocking Peptides](#)
- [Dot Blot](#)
- [Immunohistochemistry](#)
- [Immunofluorescence](#)
- [Immunoprecipitation](#)
- [Flow Cytometry](#)
- [Cell Culture](#)

**SRAC1 Antibody (C-term) - Images**



SRAC1 Antibody (C-term) (Cat. #AP10801b) western blot analysis in mouse stomach tissue lysates (35ug/lane). This demonstrates the SRAC1 antibody detected the SRAC1 protein (arrow).



SRAC1 Antibody (C-term) (Cat. #AP10801b) immunohistochemistry analysis in formalin fixed and paraffin embedded human testis carcinoma followed by peroxidase conjugation of the secondary antibody and DAB staining. This data demonstrates the use of the SRAC1 Antibody (C-term) for immunohistochemistry. Clinical relevance has not been evaluated.

#### **SRAC1 Antibody (C-term) - References**

Rose, J. Phd, et al. Mol. Med. (2010) In press :  
Mungall, A.J., et al. Nature 425(6960):805-811(2003)