

ORML2 Antibody (Center)
Affinity Purified Rabbit Polyclonal Antibody (Pab)
Catalog # AP10815c**Specification**

ORML2 Antibody (Center) - Product Information

Application	WB, IHC-P,E
Primary Accession	Q53FV1
Other Accession	Q6QI25 , Q9CPZ6 , Q8N138 , Q5XJR6 , Q0VD15 , Q9CQZ0 , Q5E972 , Q5XH57 , Q9P0S3 , Q8JFB7 , Q29RQ9 , NP_054901.1
Reactivity	Human
Predicted	Bovine, Zebrafish, Xenopus, Mouse, Rat
Host	Rabbit
Clonality	Polyclonal
Isotype	Rabbit IgG
Calculated MW	17363
Antigen Region	53-81

ORML2 Antibody (Center) - Additional Information**Gene ID** 29095**Other Names**

ORM1-like protein 2, Adoplin-2, ORMDL2

Target/Specificity

This ORML2 antibody is generated from rabbits immunized with a KLH conjugated synthetic peptide between 53-81 amino acids from the Central region of human ORML2.

DilutionWB~~1:1000
IHC-P~~1:50~100**Format**

Purified polyclonal antibody supplied in PBS with 0.09% (W/V) sodium azide. This antibody is purified through a protein A column, followed by peptide affinity purification.

Storage

Maintain refrigerated at 2-8°C for up to 2 weeks. For long term storage store at -20°C in small aliquots to prevent freeze-thaw cycles.

Precautions

ORML2 Antibody (Center) is for research use only and not for use in diagnostic or therapeutic procedures.

ORML2 Antibody (Center) - Protein Information

Name ORMDL2

Function Plays an essential role in the homeostatic regulation of sphingolipid de novo biosynthesis by modulating the activity of the serine palmitoyltransferase (SPT) in response to ceramide levels (PubMed:[20182505](#)). When complexed to SPT, the binding of ceramides to its N-terminus stabilizes a conformation that block SPT substrate entry, hence preventing SPT catalytic activity. Through this mechanism, maintains ceramide levels at sufficient concentrations for the production of complex sphingolipids, but which prevents the accumulation of ceramides to levels that trigger apoptosis (By similarity).

Cellular Location

Endoplasmic reticulum membrane; Multi-pass membrane protein

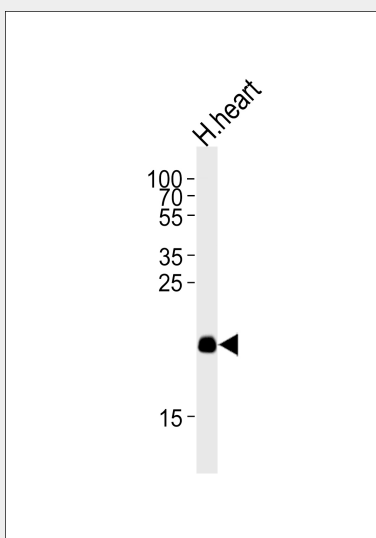
Tissue Location

Widely expressed. Expressed in adult and fetal heart, brain, lung, liver, skeletal muscle and kidney. Expressed in adult pancreas and placenta and in fetal spleen and thymus

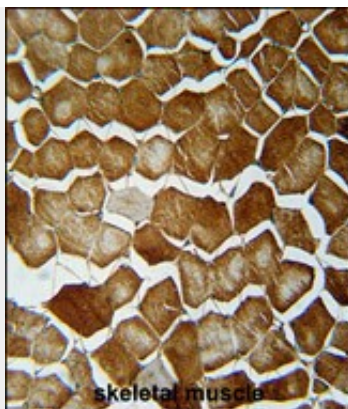
ORML2 Antibody (Center) - Protocols

Provided below are standard protocols that you may find useful for product applications.

- [Western Blot](#)
- [Blocking Peptides](#)
- [Dot Blot](#)
- [Immunohistochemistry](#)
- [Immunofluorescence](#)
- [Immunoprecipitation](#)
- [Flow Cytometry](#)
- [Cell Culture](#)

ORML2 Antibody (Center) - Images

Western blot analysis of lysate from human heart tissue lysate, using ORML2 Antibody (Center)(Cat. #AP10815c). AP10815c was diluted at 1:1000 at each lane. A goat anti-rabbit IgG H&L(HRP) at 1:5000 dilution was used as the secondary antibody. Lysate at 35ug per lane.



ORML2 Antibody (Center) (Cat. #AP10815c) immunohistochemistry analysis in formalin fixed and paraffin embedded human skeletal muscle followed by peroxidase conjugation of the secondary antibody and DAB staining. This data demonstrates the use of the ORML2 Antibody (Center) for immunohistochemistry. Clinical relevance has not been evaluated.

ORML2 Antibody (Center) - Background

Negative regulator of sphingolipid synthesis.

ORML2 Antibody (Center) - References

Hjelmqvist, L., et al. Genome Biol. 3 (6), RESEARCH0027 (2002) :