

**CP045 Antibody (Center)**  
**Affinity Purified Rabbit Polyclonal Antibody (Pab)**  
**Catalog # AP10819C****Specification**

---

**CP045 Antibody (Center) - Product Information**

Application	WB, IHC-P,E
Primary Accession	<a href="#">Q96MC5</a>
Other Accession	<a href="#">Q5FVJ5</a> , <a href="#">Q8R1Y2</a> , <a href="#">NP_001135941.1</a>
Reactivity	Human
Predicted	Mouse, Rat
Host	Rabbit
Clonality	Polyclonal
Isotype	Rabbit IgG
Calculated MW	23732
Antigen Region	86-115

**CP045 Antibody (Center) - Additional Information****Gene ID** 89927**Other Names**

Uncharacterized protein C16orf45, C16orf45

**Target/Specificity**

This CP045 antibody is generated from rabbits immunized with a KLH conjugated synthetic peptide between 86-115 amino acids from the Central region of human CP045.

**Dilution**

WB~~1:1000

IHC-P~~1:50~100

**Format**

Purified polyclonal antibody supplied in PBS with 0.09% (W/V) sodium azide. This antibody is purified through a protein A column, followed by peptide affinity purification.

**Storage**

Maintain refrigerated at 2-8°C for up to 2 weeks. For long term storage store at -20°C in small aliquots to prevent freeze-thaw cycles.

**Precautions**

CP045 Antibody (Center) is for research use only and not for use in diagnostic or therapeutic procedures.

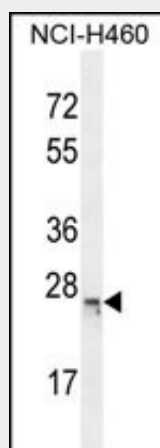
**CP045 Antibody (Center) - Protein Information****Name** BMERB1 ([HGNC:19213](#))

### CP045 Antibody (Center) - Protocols

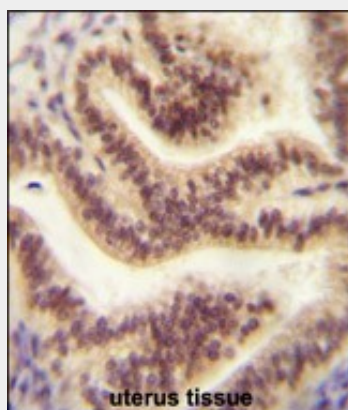
Provided below are standard protocols that you may find useful for product applications.

- [Western Blot](#)
- [Blocking Peptides](#)
- [Dot Blot](#)
- [Immunohistochemistry](#)
- [Immunofluorescence](#)
- [Immunoprecipitation](#)
- [Flow Cytometry](#)
- [Cell Culture](#)

### CP045 Antibody (Center) - Images



CP045 Antibody (Center) (Cat. #AP10819c) western blot analysis in NCI-H460 cell line lysates (35ug/lane). This demonstrates the CP045 antibody detected the CP045 protein (arrow).



CP045 antibody (Center) (Cat. #AP10819c) immunohistochemistry analysis in formalin fixed and paraffin embedded human uterus tissue followed by peroxidase conjugation of the secondary antibody and DAB staining. This data demonstrates the use of the CP045 antibody (Center) for immunohistochemistry. Clinical relevance has not been evaluated.

### CP045 Antibody (Center) - References

Lamesch, P., et al. Genomics 89(3):307-315(2007)  
Loftus, B.J., et al. Genomics 60(3):295-308(1999)