

P5F1B Antibody (C-term)
Affinity Purified Rabbit Polyclonal Antibody (Pab)
Catalog # AP10822b

Specification

P5F1B Antibody (C-term) - Product Information

Application	WB, FC,E
Primary Accession	Q06416
Other Accession	Q9TSV5 , P20263 , Q01860 , Q97552 , NP_001153014.1
Reactivity	Human
Predicted	Bovine, Mouse, Pig
Host	Rabbit
Clonality	Polyclonal
Isotype	Rabbit IgG
Calculated MW	38588
Antigen Region	214-242

P5F1B Antibody (C-term) - Additional Information

Gene ID 5462

Other Names

Putative POU domain, class 5, transcription factor 1B, Oct4-pg1, Octamer-binding protein 3-like, Octamer-binding transcription factor 3-like, POU5F1B

Target/Specificity

This P5F1B antibody is generated from rabbits immunized with a KLH conjugated synthetic peptide between 214-242 amino acids from the C-terminal region of human P5F1B.

Dilution

WB~~1:1000
FC~~1:10~50

Format

Purified polyclonal antibody supplied in PBS with 0.09% (W/V) sodium azide. This antibody is purified through a protein A column, followed by peptide affinity purification.

Storage

Maintain refrigerated at 2-8°C for up to 2 weeks. For long term storage store at -20°C in small aliquots to prevent freeze-thaw cycles.

Precautions

P5F1B Antibody (C-term) is for research use only and not for use in diagnostic or therapeutic procedures.

P5F1B Antibody (C-term) - Protein Information

Name POU5F1B

Function Shows weak transcriptional activator activity.

Cellular Location

Nucleus {ECO:0000255|PROSITE-ProRule:PRU00108, ECO:0000255|PROSITE-ProRule:PRU00530, ECO:0000269|PubMed:18949397}

Tissue Location

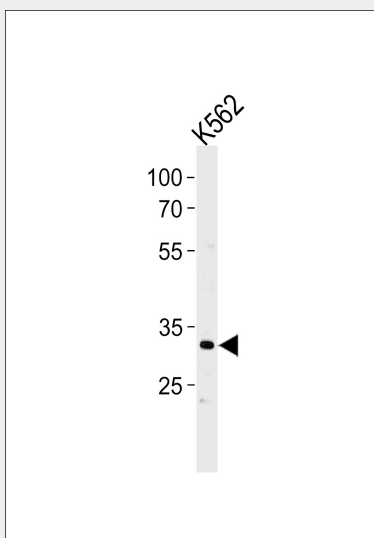
Detected at the mRNA level in several cancer tissues (breast, uterine cervix, lung, thyroid gland, esophagus, colon, urinary bladder, and glioma), but absent in normal tissues

P5F1B Antibody (C-term) - Protocols

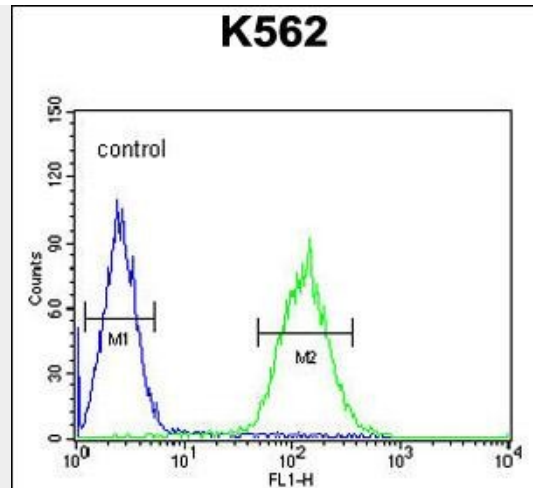
Provided below are standard protocols that you may find useful for product applications.

- [Western Blot](#)
- [Blocking Peptides](#)
- [Dot Blot](#)
- [Immunohistochemistry](#)
- [Immunofluorescence](#)
- [Immunoprecipitation](#)
- [Flow Cytometry](#)
- [Cell Culture](#)

P5F1B Antibody (C-term) - Images



P5F1B Antibody (C-term) (Cat. #AP10822b) western blot analysis in K562 cell line lysates (35ug/lane). This demonstrates the P5F1B antibody detected the P5F1B protein (arrow).



P5F1B Antibody (C-term) (Cat. #AP10822b) flow cytometric analysis of K562 cells (right histogram) compared to a negative control cell (left histogram). FITC-conjugated goat-anti-rabbit secondary antibodies were used for the analysis.

P5F1B Antibody (C-term) - Background

This intronless gene was thought to be a transcribed pseudogene of POU class 5 homeobox 1, however, it has been reported that this gene can encode a functional protein. The encoded protein is nearly the same length as and highly similar to the POU class 5 homeobox 1 transcription factor, has been shown to be a weak transcriptional activator and may play a role in carcinogenesis and eye development.

P5F1B Antibody (C-term) - References

- Kastler, S., et al. Prostate 70(6):666-674(2010)
- White, K.L., et al. Twin Res Hum Genet 13(1):43-56(2010)
- Crowther-Swanepoel, D., et al. Nat. Genet. 42(2):132-136(2010)
- Gudmundsson, J., et al. Nat. Genet. 41(10):1122-1126(2009)
- Panagopoulos, I., et al. Oncol. Rep. 20(5):1029-1033(2008)