

**SYNE3 Antibody (C-term)**  
**Affinity Purified Rabbit Polyclonal Antibody (Pab)**  
**Catalog # AP10823b**

**Specification**

---

**SYNE3 Antibody (C-term) - Product Information**

Application	WB, IHC-P,E
Primary Accession	<a href="#">O6ZMZ3</a>
Other Accession	<a href="#">NP_689805.3</a>
Reactivity	Human, Mouse
Host	Rabbit
Clonality	Polyclonal
Isotype	Rabbit IgG
Calculated MW	112216
Antigen Region	852-880

**SYNE3 Antibody (C-term) - Additional Information**

**Gene ID** 161176

**Other Names**

Nesprin-3, Nuclear envelope spectrin repeat protein 3, SYNE3, C14orf49

**Target/Specificity**

This SYNE3 antibody is generated from rabbits immunized with a KLH conjugated synthetic peptide between 852-880 amino acids from the C-terminal region of human SYNE3.

**Dilution**

WB~~1:1000

IHC-P~~1:50~100

**Format**

Purified polyclonal antibody supplied in PBS with 0.09% (W/V) sodium azide. This antibody is purified through a protein A column, followed by peptide affinity purification.

**Storage**

Maintain refrigerated at 2-8°C for up to 2 weeks. For long term storage store at -20°C in small aliquots to prevent freeze-thaw cycles.

**Precautions**

SYNE3 Antibody (C-term) is for research use only and not for use in diagnostic or therapeutic procedures.

**SYNE3 Antibody (C-term) - Protein Information**

**Name** SYNE3 ([HGNC:19861](#))

**Function** As a component of the LINC (Linker of Nucleoskeleton and Cytoskeleton) complex

involved in the connection between the nuclear lamina and the cytoskeleton. The nucleocytoplasmic interactions established by the LINC complex play an important role in the transmission of mechanical forces across the nuclear envelope and in nuclear movement and positioning. Probable anchoring protein which tethers the nucleus to the cytoskeleton by binding PLEC which can associate with the intermediate filament system. Plays a role in the regulation of aortic epithelial cell morphology, and is required for flow-induced centrosome polarization and directional migration in aortic endothelial cells.

**Cellular Location**

Nucleus outer membrane; Single-pass type IV membrane protein. Nucleus envelope. Rough endoplasmic reticulum

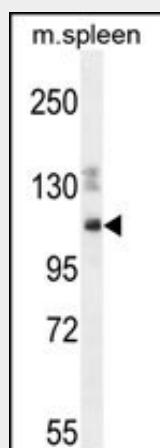
**Tissue Location**

Expressed in aortic endothelial cells (at protein level).

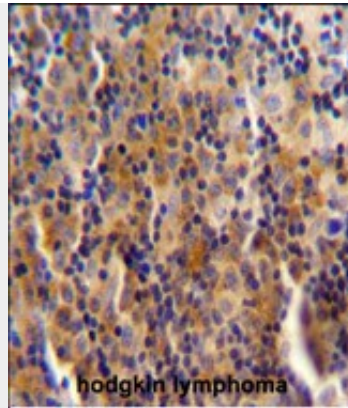
**SYNE3 Antibody (C-term) - Protocols**

Provided below are standard protocols that you may find useful for product applications.

- [Western Blot](#)
- [Blocking Peptides](#)
- [Dot Blot](#)
- [Immunohistochemistry](#)
- [Immunofluorescence](#)
- [Immunoprecipitation](#)
- [Flow Cytometry](#)
- [Cell Culture](#)

**SYNE3 Antibody (C-term) - Images**

SYNE3 Antibody (C-term) (Cat. #AP10823b) western blot analysis in mouse spleen cell line lysates (35ug/lane). This demonstrates the SYNE3 antibody detected the SYNE3 protein (arrow).



SYNE3 antibody (C-term) (Cat. #AP10823b) immunohistochemistry analysis in formalin fixed and paraffin embedded human hodgkin lymphoma followed by peroxidase conjugation of the secondary antibody and DAB staining. This data demonstrates the use of SYNE3 antibody (C-term) for immunohistochemistry. Clinical relevance has not been evaluated.

#### **SYNE3 Antibody (C-term) - Background**

Component of SUN-protein-containing multivariate complexes also called LINC complexes which link the nucleoskeleton and cytoskeleton by providing versatile outer nuclear membrane attachment sites for cytoskeletal filaments. Involved in the maintenance of nuclear organization and structural integrity. Probable anchoring protein which tethers the nucleus to the cytoskeleton by binding PLEC which can associate with the intermediate filament system.

#### **SYNE3 Antibody (C-term) - References**

Nery, F.C., et al. J. Cell. Sci. 121 (PT 20), 3476-3486 (2008) :  
Stewart-Hutchinson, P.J., et al. Exp. Cell Res. 314(8):1892-1905(2008)  
Wilhelmsen, K., et al. J. Cell Biol. 171(5):799-810(2005)  
Heilig, R., et al. Nature 421(6923):601-607(2003)