

TAPT1 Antibody (C-term)
Affinity Purified Rabbit Polyclonal Antibody (Pab)
Catalog # AP10831b**Specification**

TAPT1 Antibody (C-term) - Product Information

Application	WB, FC,E
Primary Accession	Q6NXT6
Other Accession	Q4VBD2 , Q5ZLG8 , NP_699196.2
Reactivity	Human, Mouse
Predicted	Chicken
Host	Rabbit
Clonality	Polyclonal
Isotype	Rabbit IgG
Calculated MW	64260
Antigen Region	530-558

TAPT1 Antibody (C-term) - Additional Information**Gene ID** 202018**Other Names**

Transmembrane anterior posterior transformation protein 1 homolog, Cytomegalovirus partial fusion receptor, TAPT1, CMVFR

Target/Specificity

This TAPT1 antibody is generated from rabbits immunized with a KLH conjugated synthetic peptide between 530-558 amino acids from the C-terminal region of human TAPT1.

Dilution

WB~~1:1000
FC~~1:10~50

Format

Purified polyclonal antibody supplied in PBS with 0.09% (W/V) sodium azide. This antibody is purified through a protein A column, followed by peptide affinity purification.

Storage

Maintain refrigerated at 2-8°C for up to 2 weeks. For long term storage store at -20°C in small aliquots to prevent freeze-thaw cycles.

Precautions

TAPT1 Antibody (C-term) is for research use only and not for use in diagnostic or therapeutic procedures.

TAPT1 Antibody (C-term) - Protein Information**Name** TAPT1

Synonyms CMVFR

Function Plays a role in primary cilia formation (PubMed:[26365339](#)). May act as a downstream effector of HOXC8 possibly by transducing or transmitting extracellular information required for axial skeletal patterning during development (By similarity). May be involved in cartilage and bone development (By similarity). May play a role in the differentiation of cranial neural crest cells (By similarity).

Cellular Location

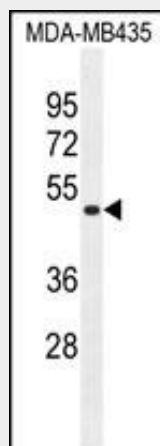
Cytoplasm, cytoskeleton, microtubule organizing center, centrosome. Cytoplasm, cytoskeleton, cilium basal body. Membrane; Multi-pass membrane protein

TAPT1 Antibody (C-term) - Protocols

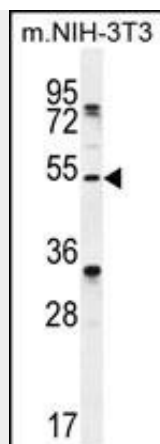
Provided below are standard protocols that you may find useful for product applications.

- [Western Blot](#)
- [Blocking Peptides](#)
- [Dot Blot](#)
- [Immunohistochemistry](#)
- [Immunofluorescence](#)
- [Immunoprecipitation](#)
- [Flow Cytometry](#)
- [Cell Culture](#)

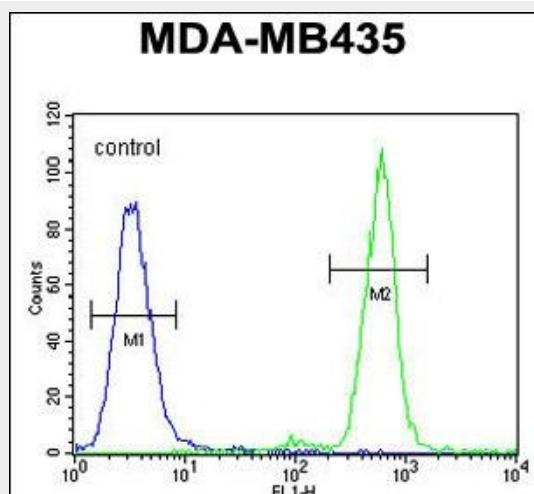
TAPT1 Antibody (C-term) - Images



TAPT1 Antibody (C-term) (Cat. #AP10831b) western blot analysis in MDA-MB435 cell line lysates (35ug/lane). This demonstrates the TAPT1 antibody detected the TAPT1 protein (arrow).



TAPT1 Antibody (C-term) (Cat. #AP10831b) western blot analysis in mouse NIH-3T3 cell line lysates (35ug/lane). This demonstrates the TAPT1 antibody detected the TAPT1 protein (arrow).



TAPT1 Antibody (C-term) (Cat. #AP10831b) flow cytometric analysis of MDA-MB435 cells (right histogram) compared to a negative control cell (left histogram). FITC-conjugated goat-anti-rabbit secondary antibodies were used for the analysis.

TAPT1 Antibody (C-term) - Background

This gene encodes a highly conserved, putative transmembrane protein. A mutation in the mouse ortholog of this gene results in homeotic, posterior-to-anterior transformations of the axial skeleton which are similar to the phenotype of mouse homeobox C8 gene mutants. This gene is proposed to function downstream of homeobox C8 to transduce extracellular patterning information during axial skeleton development. An alternatively spliced transcript variant encoding a substantially different isoform has been described, but its biological validity has not been determined.

TAPT1 Antibody (C-term) - References

- Howell, G.R., et al. Genetics 175(2):699-707(2007)
- Baldwin, B.R., et al. J. Gen. Virol. 81 (PT 1), 27-35 (2000) :
- Baldwin, B.R., et al. Biochem. Biophys. Res. Commun. 219(2):668-673(1996)