

**TCL6 Antibody (C-term)**  
**Affinity Purified Rabbit Polyclonal Antibody (Pab)**  
**Catalog # AP10849b****Specification**

---

**TCL6 Antibody (C-term) - Product Information**

|                   |                             |
|-------------------|-----------------------------|
| Application       | WB, FC,E                    |
| Primary Accession | <a href="#">P56846</a>      |
| Other Accession   | <a href="#">NP_036600.2</a> |
| Reactivity        | Human                       |
| Host              | Rabbit                      |
| Clonality         | Polyclonal                  |
| Isotype           | Rabbit IgG                  |
| Antigen Region    | 101-130                     |

**TCL6 Antibody (C-term) - Additional Information****Other Names**

TCL6; TNG1; TNG2; Putative T-cell leukemia/lymphoma protein 6; TCL1 neighboring gene 1 protein

**Target/Specificity**

This TCL6 antibody is generated from rabbits immunized with a KLH conjugated synthetic peptide between 101-130 amino acids from the C-terminal region of human TCL6.

**Dilution**

WB~~1:1000  
FC~~1:10~50

**Format**

Purified polyclonal antibody supplied in PBS with 0.09% (W/V) sodium azide. This antibody is purified through a protein A column, followed by peptide affinity purification.

**Storage**

Maintain refrigerated at 2-8°C for up to 2 weeks. For long term storage store at -20°C in small aliquots to prevent freeze-thaw cycles.

**Precautions**

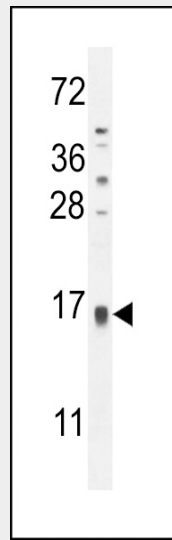
TCL6 Antibody (C-term) is for research use only and not for use in diagnostic or therapeutic procedures.

**TCL6 Antibody (C-term) - Protein Information****TCL6 Antibody (C-term) - Protocols**

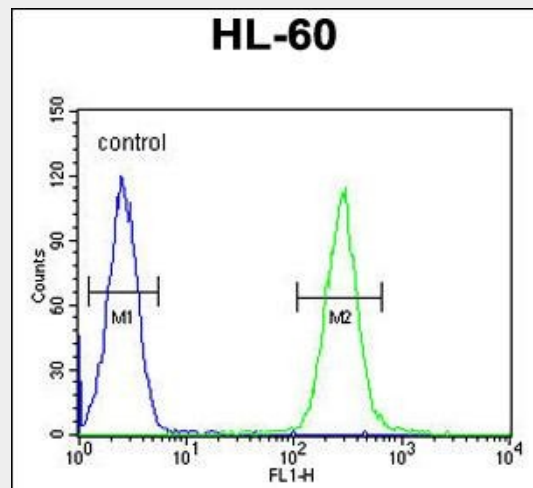
Provided below are standard protocols that you may find useful for product applications.

- [Western Blot](#)
- [Blocking Peptides](#)
- [Dot Blot](#)
- [Immunohistochemistry](#)
- [Immunofluorescence](#)
- [Immunoprecipitation](#)
- [Flow Cytometry](#)
- [Cell Culture](#)

#### TCL6 Antibody (C-term) - Images



TCL6 Antibody (C-term) (Cat. #AP10849b) western blot analysis in HL-60 cell line lysates (35ug/lane). This demonstrates the TCL6 antibody detected the TCL6 protein (arrow).



TCL6 Antibody (C-term) (Cat. #AP10849b) flow cytometric analysis of HL-60 cells (right histogram) compared to a negative control cell (left histogram). FITC-conjugated goat-anti-rabbit secondary antibodies were used for the analysis.